

Nur für Forschungszwecke

ETS1 Monoklonaler Antikörper

Katalog-Nr.:66598-1-Ig

Vorgestelltes Produkt

2 Publikationen



Allgemeine Informationen

Katalog-Nr.:

66598-1-Ig

GenBank-Zugangsnummer:

BC017314

Reinigungsmethode:

Protein-A-Reinigung

Größe:

150ul, Konzentration: 1700 µg/ml von2113

GeneID (NCBI):

v-ets erythroblastosis virus E26 oncogene homolog 1 (avian)

CloneNo.:

4F2D4

Nanodrop und 1000 µg/ml durch die Bradford-Methode mit BSA als Standard;

Vollständiger Name:

Empfohlene Verdünnungen:

WB 1:2000-1:5000

Wirt:

Maus

Berechnete Masse:

441 aa, 50 kDa

Isotyp:

IgG2b

Beobachtete Masse:

50 kDa

Immunogen Katalognummer:

AG2127

Anwendungen

Geprüfte Anwendungen:

WB, ELISA

Positivkontrollen:

WB : HepG2-Zellen, Daudi-Zellen, HSC-T6-Zellen, Jurkat-Zellen

In Publikationen genannte Anwendungen:

IHC, WB

Getestete Reaktivität:

Human, Ratte

Zitierte Arten:

Human

Hintergrundinformationen

ETS1 is a member of the ETS family of transcription factors, which are defined by the presence of a conserved ETS DNA-binding domain that recognizes the core consensus DNA sequence GGAA/T in target genes. ETS1 is a nuclear protein and primarily acts as a transcriptional activator, though it can also repress gene transcription. Since it is primarily expressed in lymphocytes, it plays several critical roles in immunity. In addition, it is important for angiogenesis. Since cells express several Ets proteins at the same time, functional redundancy is possible. This is particularly shown for the so-called housekeeping genes where several Ets factors were found to occupy the proximal promoters in vivo.

Bemerkenswerte Veröffentlichungen

Verfasser	Pubmed ID	Journal	Anwendung
Rebecca A Luchtel	35675522	Blood Adv	WB
Lihong Lu	34238215	Mol Med	WB,IHC

Lagerung

Lagerungsbedingungen:

Bei -20°C lagern. Nach dem Versand ein Jahr lang stabil

Lagerungspuffer:

PBS mit 0.02% Natriumazid und 50% Glycerin pH 7.3.

Aliquotieren ist nicht notwendig bei -20°C Lagerung

*** 20ul-Größen enthalten 0.1% BSA

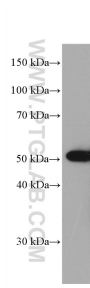
For technical support and original validation data for this product please contact:

T: 1 (888) 4PTGLAB (1-888-478-4522) (toll free in USA), or 1(312) 455-8498 (outside USA)

E: proteintech@ptglab.com
W: ptglab.com

This product is exclusively available under Proteintech Group brand and is not available to purchase from any other manufacturer.

Ausgewählte Validierungsdaten



HepG2 cells were subjected to SDS PAGE followed by western blot with 66598-1-Ig (ETS1 antibody) at dilution of 1:5000 incubated at room temperature for 1.5 hours.