

Nur für Forschungszwecke

# KU70, XRCC6 Monoklonaler Antikörper



Katalog-Nr.: 66607-1-Ig **5 Publikationen**

## Allgemeine Informationen

<b>Katalog-Nr.:</b> 66607-1-Ig	<b>GenBank-Zugangsnummer:</b> BC008343	<b>Reinigungsmethode:</b> Protein-G-Reinigung
<b>Größe:</b> 150ul, Konzentration: 1000 µg/ml von 2547 Nanodrop und 1000 µg/ml durch die Bradford-Methode mit BSA als Standard;	<b>GeneID (NCBI):</b> Vollständiger Name: X-ray repair complementing defective repair in Chinese hamster cells 6	<b>CloneNo.:</b> 3C12D9 <b>Empfohlene Verdünnungen:</b> WB 1:20000-1:100000 IHC 1:2000-1:8000 IF 1:500-1:2000
<b>Wirt:</b> Maus	<b>Berechnete Masse:</b> 75 kDa	
<b>Isotyp:</b> IgG1	<b>Beobachtete Masse:</b> 70 kDa	
<b>Immunogen Katalognummer:</b> AG21301		

## Anwendungen

<b>Geprüfte Anwendungen:</b> IF, IHC, WB, ELISA	<b>Positivkontrollen:</b> <b>WB:</b> LNCaP-Zellen, HEK-293-Zellen, HeLa-Zellen, HepG2-Zellen, Jurkat-Zellen, K-562-Zellen, Neuro-2a-Zellen, NIH/3T3-Zellen, RAW 264.7-Zellen <b>IHC:</b> humanes Mammakarzinomgewebe, humanes Kolonkarzinomgewebe, humanes Lungenkarzinomgewebe <b>IF:</b> HeLa-Zellen, HepG2-Zellen, humanes Mammakarzinomgewebe
<b>In Publikationen genannte Anwendungen:</b> CoIP, IF, IP, WB	
<b>Getestete Reaktivität:</b> Human, Maus, Ratte	
<b>Zitierte Arten:</b> Human, Maus	
<b>Hinweis-IHC: Antigenmaskierung mit TE-Puffer pH 9,0 empfohlen. (*) Wahlweise kann die Antigenmaskierung auch mit Citratpuffer pH 6,0 erfolgen.</b>	

## Hintergrundinformationen

X-ray repair cross-complementing protein 6 (XRCC6) gene encodes subunit p70 of the p70/p80 autoantigen which has a role in DNA repair or transposition. DNA helicase II complex binds preferentially to fork-like ends of double-stranded DNA in a cell cycle-dependent manner, which may be mediated by XRCC6. XRCC6/5 can form a heterodimer, which function as a regulatory subunit of the DNA-dependent protein kinase complex DNA-PK by increasing the affinity of the catalytic subunit PRKDC to DNA, and also it can stabilize broken DNA ends and bringing them together. Otherwise, XRCC6/5 heterodimer together with APEX1 can negatively regulate of transcription.

## Bemerkenswerte Veröffentlichungen

Verfasser	Pubmed ID	Journal	Anwendung
Qidong Li	36417875	Cell Rep	IF
Yan Wang	33667382	Immunity	WB, IF, IP
Tao Wang	35036867	iScience	IF

## Lagerung

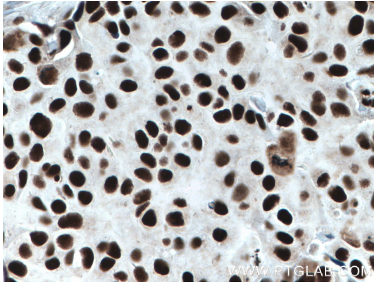
**Lagerungsbedingungen:**  
Bei -20°C lagern. Nach dem Versand ein Jahr lang stabil  
**Lagerungspuffer:**  
PBS mit 0.02% Natriumazid und 50% Glycerin pH 7.3.  
Aliquotieren ist nicht notwendig bei -20°C Lagerung

\*\*\* 20ul-Größen enthalten 0.1% BSA

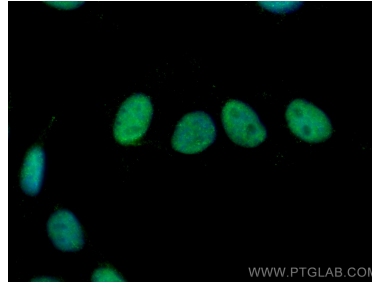
For technical support and original validation data for this product please contact:  
T: 1 (888) 4PTGLAB (1-888-478-4522) (toll free in USA), or 1(312) 455-8498 (outside USA)  
E: proteintech@ptglab.com  
W: ptglab.com

This product is exclusively available under Proteintech Group brand and is not available to purchase from any other manufacturer.

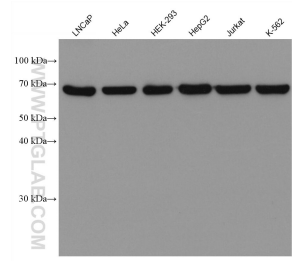
## Ausgewählte Validierungsdaten



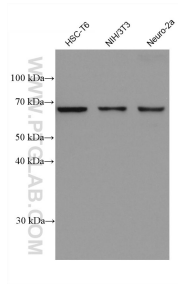
Immunohistochemical analysis of paraffin-embedded human breast cancer tissue slide using 66607-1-Ig (KU70,XRCC6 antibody) at dilution of 1:4000 (under 40x lens. Heat mediated antigen retrieval with Tris-EDTA buffer (pH 9.0).



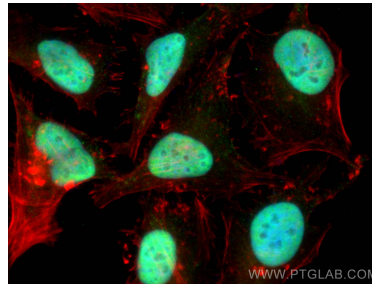
Immunofluorescent analysis of (4% PFA) fixed HepG2 cells using KU70,XRCC6 antibody (66607-1-Ig, Clone: 3C12D9) at dilution of 1:800 and CoraLite®488-Conjugated AffiniPure Goat Anti-Mouse IgG(H+L).



Various lysates were subjected to SDS PAGE followed by western blot with 66607-1-Ig (KU70,XRCC6 antibody) at dilution of 1:50000 incubated at room temperature for 1.5 hours.



Various lysates were subjected to SDS PAGE followed by western blot with 66607-1-Ig (KU70,XRCC6 antibody) at dilution of 1:50000 incubated at room temperature for 1.5 hours.



Immunofluorescent analysis of (4% PFA) fixed HeLa cells using KU70,XRCC6 antibody (66607-1-Ig, Clone: 3C12D9) at dilution of 1:1000 and CoraLite®488-Conjugated AffiniPure Goat Anti-Mouse IgG(H+L), CL594-Phalloidin (red).