

Allgemeine Informationen

Katalog-Nr.: 66612-1-Ig	GenBank-Zugangsnummer: BC053509	Reinigungsmethode: Protein-A-Reinigung
Größe: 150ul , Konzentration: 1800 µg/ml von4524 Nanodrop und 1000 µg/ml durch die Bradford-Methode mit BSA als Standard;	GeneID (NCBI): 4524	CloneNo.: 1F7A3
Wirt: Maus	Vollständiger Name: 5,10-methylenetetrahydrofolate reductase (NADPH)	Empfohlene Verdünnungen: WB 1:5000-1:50000 IHC 1:500-1:2000 IF 1:200-1:800
Isotyp: IgG2b	Berechnete Masse: 656 aa, 75 kDa	
Immunogen Katalognummer: AG14970	Beobachtete Masse: 70 kDa	

Anwendungen

Geprüfte Anwendungen: IF, IHC, WB, ELISA	Positivkontrollen: WB : LNCaP-Zellen, HeLa-Zellen, HepG2-Zellen, Jurkat-Zellen IHC : humanes Lebergewebe, IF : HeLa-Zellen,
In Publikationen genannte Anwendungen: WB	
Getestete Reaktivität: Human	
Zitierte Arten: Human	
Hinweis-IHC: Antigenmaskierung mit TE-Puffer pH 9,0 empfohlen. (*) Wahlweise kann die Antigenmaskierung auch mit Citratpuffer pH 6,0 erfolgen.	

Hintergrundinformationen

5,10-Methylenetetrahydrofolate reductase (MTHFR) is a crucial enzyme in the folate metabolic pathway with a key role in generating methyl groups. MTHFR reduces 5,10-methylenetetrahydrofolate (5,10-methyleneTHF) to 5-methylTHF, the primary carbon donor for methionine production from homocysteine. In humans and mice studies, mutations and polymorphisms in MTHFR are associated with impaired spermatogenesis and male infertility. It has been reported that MTHFR is highly phosphorylated under unperturbed conditions and T34 is the priming phosphorylation site. MTHFR gene has two promoters and isoform (70 kDa and 77 kDa). Although the major form of MTHFR is 77kDa in most tissues, a second isoform of 70kDa was observed after western blotting of human fetal liver and porcine liver. (PMID: 24769206, PMID: 34128976, PMID: 18615588)

Bemerkenswerte Veröffentlichungen

Verfasser	Pubmed ID	Journal	Anwendung
Li Cui	34533844	J Pineal Res	WB
Elodie Villa	33756106	Mol Cell	WB
Hongwei Chu	34932315	Anal Chem	WB

Lagerung

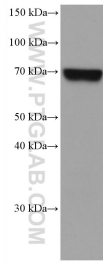
Lagerungsbedingungen:
Bei -20°C lagern. Nach dem Versand ein Jahr lang stabil
Lagerungspuffer:
PBS mit 0.02% Natriumazid und 50% Glycerin pH 7.3.
Aliquotieren ist nicht notwendig bei -20°C Lagerung

***** 20ul-Größen enthalten 0.1% BSA**

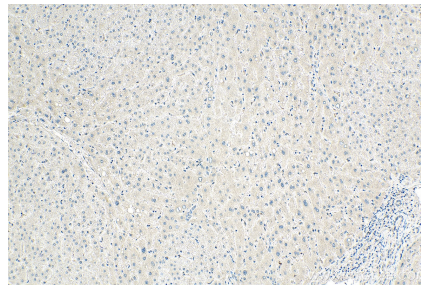
For technical support and original validation data for this product please contact:
T: 1 (888) 4PTGLAB (1-888-478-4522) (toll free in USA), or 1(312) 455-8498 (outside USA)
E: proteintech@ptglab.com
W: ptglab.com

This product is exclusively available under Proteintech Group brand and is not available to purchase from any other manufacturer.

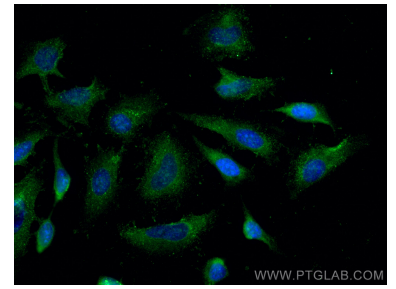
Ausgewählte Validierungsdaten



LNCaP cells were subjected to SDS PAGE followed by western blot with 66612-1-Ig (MTHFR antibody) at dilution of 1:10000 incubated at room temperature for 1.5 hours.



Immunohistochemical analysis of paraffin-embedded human liver tissue slide using 66612-1-Ig (MTHFR antibody) at dilution of 1:1000 (under 10x lens). Heat mediated antigen retrieval with Tris-EDTA buffer (pH 9.0).



Immunofluorescent analysis of (-20°C Methanol) fixed HeLa cells using MTHFR antibody (66612-1-Ig, Clone: 1F7A3) at dilution of 1:400 and CoraLite®488-Conjugated AffiniPure Goat Anti-Mouse IgG(H+L).