

Nur für Forschungszwecke

S100 Beta Monoklonaler Antikörper



Katalog-Nr.:66616-1-Ig **11 Publikationen**

Allgemeine Informationen

Katalog-Nr.: 66616-1-Ig	GenBank-Zugangsnummer: BC001766	Reinigungsmethode: Protein-G-Reinigung
Größe: 150ul, Konzentration: 1000 µg/ml von6285 Nanodrop;	GeneID (NCBI): S100 calcium binding protein B	CloneNo.: 1G10F4
Wirt: Maus	Vollständiger Name: S100 calcium binding protein B	Empfohlene Verdünnungen: WB 1:1000-1:4000 IHC 1:50-1:500 IF 1:200-1:800
Isotyp: IgG1	Berechnete Masse: 11 kDa	
Immunogen Katalognummer: AG7440	Beobachtete Masse: 11 kDa	

Anwendungen

Geprüfte Anwendungen:

IF, IHC, WB, ELISA

In Publikationen genannte Anwendungen:

IF, IHC, WB

Getestete Reaktivität:

Hausschwein, Human, Maus, Ratte

Zitierte Arten:

Human, Maus, Ratte

Positivkontrollen:

WB : Rattenhirngewebe, C6-Zellen, Hausschwein-Hirngewebe

IHC : humanes malignes Melanomgewebe, humanes Appendizitis-Gewebe, Maushirngewebe, Rattenhirngewebe

IF : Rattenhirngewebe,

Hinweis-IHC: Antigendemaskierung mit TE-Puffer pH 9,0 empfohlen. (*) Wahlweise kann die Antigendemaskierung auch mit Citratpuffer pH 6,0 erfolgen.

Hintergrundinformationen

S100B is a member of the S100 family of proteins containing 2 EF-hand calcium-binding motifs and has been implicated in the regulation of cellular activities such as metabolism, motility and proliferation. In the nervous system, S100B is constitutively released by astrocytes into the extracellular space and at nanomolar concentrations, it can promote neurite outgrowth and protect neurons against oxidative stress. Within the central nervous system (CNS), S100B is thought to be a marker for astroglial activation, linking astrocyte dysfunction to schizophrenia. In addition to astrocytes, S100B is released from many cell types, such as, adipocytes, chondrocytes, cardiomyocytes and lymphocytes. Serum S100B represents a new biomarker for mood disorders.

Bemerkenswerte Veröffentlichungen

Verfasser	Pubmed ID	Journal	Anwendung
Vedad Delic	36435806	Acta Neuropathol Commun	WB
Zhaoyang Wu	36370841	Exp Neurol	IF
Zhigang Wang	34118692	Transl Oncol	IF

Lagerung

Lagerungsbedingungen:

Bei -20°C lagern. Nach dem Versand ein Jahr lang stabil

Lagerungspuffer:

PBS mit 0.02% Natriumazid und 50% Glycerin pH 7.3.

Aliquotieren ist nicht notwendig bei -20°C Lagerung

***** 20ul-Größen enthalten 0.1% BSA**

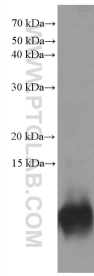
For technical support and original validation data for this product please contact:

T: 1 (888) 4PTGLAB (1-888-478-4522) (toll free in USA), or 1(312) 455-8498 (outside USA)

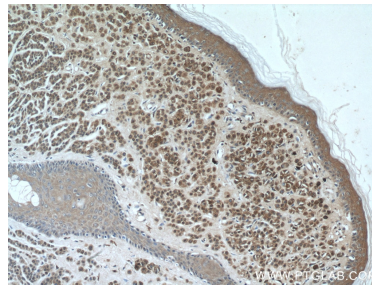
E: proteintech@ptglab.com
W: ptglab.com

This product is exclusively available under Proteintech Group brand and is not available to purchase from any other manufacturer.

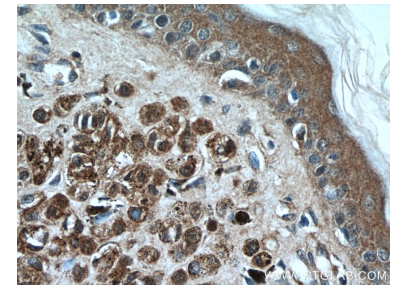
Ausgewählte Validierungsdaten



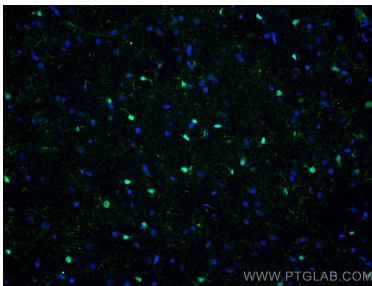
rat brain tissue were subjected to SDS PAGE followed by western blot with 66616-1-Ig (S100B antibody) at dilution of 1:2000 incubated at room temperature for 1.5 hours.



Immunohistochemical analysis of paraffin-embedded human malignant melanoma tissue slide using 66616-1-Ig (S100B antibody) at dilution of 1:200 (under 10x lens).



Immunohistochemical analysis of paraffin-embedded human malignant melanoma tissue slide using 66616-1-Ig (S100B antibody) at dilution of 1:200 (under 40x lens).



Immunofluorescent analysis of (4% PFA) fixed rat brain tissue using S100 Beta antibody (66616-1-Ig, Clone: 1G10F4) at dilution of 1:400 and CoraLite®488-Conjugated AffiniPure Goat Anti-Mouse IgG(H+L).