

Nur für Forschungszwecke

RABEPK/p40 Monoklonaler Antikörper



Katalog-Nr.: 66622-1-Ig **1 Publikationen**

Allgemeine Informationen

Katalog-Nr.: 66622-1-Ig	GenBank-Zugangsnummer: BC065725	Reinigungsmethode: Protein-A-Reinigung
Größe: 150ul, Konzentration: 1400 µg/ml von 10244 Nanodrop und 1000 µg/ml durch die Bradford-Methode mit BSA als Standard;	GeneID (NCBI): 10244	CloneNo.: 1E11A3
Wirt: Maus	Vollständiger Name: Rab9 effector protein with kelch motifs	Empfohlene Verdünnungen: WB 1:1000-1:6000 IHC 1:500-1:2000 IF 1:50-1:500
Isotyp: IgG1	Berechnete Masse: 41 kDa	
Immunogen Katalognummer: AG7796	Beobachtete Masse: 40 kDa	

Anwendungen

Geprüfte Anwendungen: IF, IHC, WB, ELISA	Positivkontrollen: WB: Jurkat-Zellen, HEK-293-Zellen, HeLa-Zellen, HSC-T6-Zellen, RAW 264.7-Zellen IHC: humanes Lungenkarzinomgewebe, humanes Kolongewebe IF: A549-Zellen,
In Publikationen genannte Anwendungen: IHC	
Getestete Reaktivität: Human, Maus, Ratte	
Zitierte Arten: Human	
Hinweis-IHC: Antigenmaskierung mit TE-Puffer pH 9,0 empfohlen. (*) Wahlweise kann die Antigenmaskierung auch mit Citratpuffer pH 6,0 erfolgen.	

Hintergrundinformationen

Rab9 GTPase is required for the transport of mannose 6-phosphate receptors from endosomes to the trans-Golgi network in living cells, and in an in vitro system that reconstitutes this process. P40 is an effector of Rab9 that interacts preferentially with the active form of Rab9. p40 does not interact with Rab7 or K-Ras; it also fails to bind Rab9 when it is bound to GDI. The protein is found in cytosol, yet a significant fraction (~30%) is associated with cellular membranes. P40 is a very potent transport factor in that the pure, recombinant protein can stimulate, significantly, an in vitro transport assay that measures transport of mannose 6-phosphate receptors from endosomes to the trans-Golgi network.

Bemerkenswerte Veröffentlichungen

Verfasser	Pubmed ID	Journal	Anwendung
Jun Fu	35949347	Exp Ther Med	IHC

Lagerung

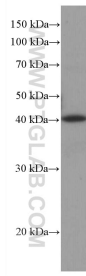
Lagerungsbedingungen:
Bei -20°C lagern. Nach dem Versand ein Jahr lang stabil
Lagerungspuffer:
PBS mit 0.02% Natriumazid und 50% Glycerin pH 7.3.
Aliquotieren ist nicht notwendig bei -20°C Lagerung

*** 20ul-Größen enthalten 0.1% BSA

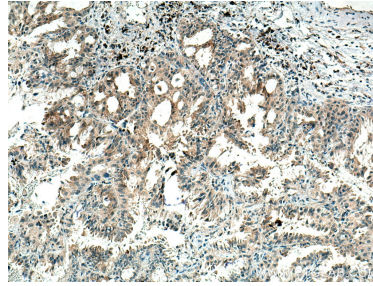
For technical support and original validation data for this product please contact:
T: 1 (888) 4PTGLAB (1-888-478-4522) (toll free in USA), or 1(312) 455-8498 (outside USA)
E: proteintech@ptglab.com
W: ptglab.com

This product is exclusively available under Proteintech Group brand and is not available to purchase from any other manufacturer.

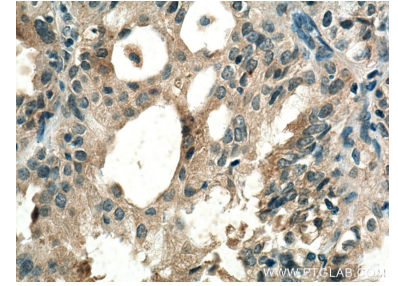
Ausgewählte Validierungsdaten



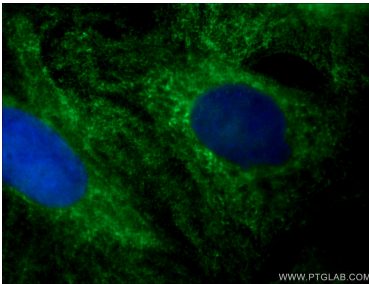
Jurkat cells were subjected to SDS PAGE followed by western blot with 66622-1-Ig (RABEPK/p40 antibody) at dilution of 1:3000 incubated at room temperature for 1.5 hours.



Immunohistochemical analysis of paraffin-embedded human lung cancer tissue slide using 66622-1-Ig (RABEPK/p40 antibody) at dilution of 1:1000 (under 10x lens). Heat mediated antigen retrieval with Tris-EDTA buffer (pH 9.0).



Immunohistochemical analysis of paraffin-embedded human lung cancer tissue slide using 66622-1-Ig (RABEPK/p40 antibody) at dilution of 1:1000 (under 40x lens). Heat mediated antigen retrieval with Tris-EDTA buffer (pH 9.0).



Immunofluorescent analysis of (-20°C Ethanol) fixed A549 cells using 66622-1-Ig (RABEPK/p40 antibody) at dilution of 1:100 and CoraLite488-Conjugated AffiniPure Goat Anti-Mouse IgG(H+L).