

## Allgemeine Informationen

|   |   |  |
|---|---|--|
| <b>Katalog-Nr.:</b><br>66625-1-Ig   | <b>GenBank-Zugangsnummer:</b><br>BC011821   | <b>Reinigungsmethode:</b><br>Protein-G-Reinigung   |
| <b>Größe:</b><br>150ul , Konzentration: 1400 µg/ml von60626<br>Nanodrop und 1000 µg/ml durch die<br>Bradford-Methode mit BSA als<br>Standard; | <b>GeneID (NCBI):</b><br>60626  | <b>CloneNo.:</b><br>1E3B11   |
| <b>Wirt:</b><br>Maus  | <b>Vollständiger Name:</b><br>resistance to inhibitors of<br>cholinesterase 8 homolog A (C.<br>elegans) | <b>Empfohlene Verdünnungen:</b><br>WB 1:2000-1:10000<br>IP 0.5-4.0 ug für IP und 1:1000-1:4000<br>für WB |
| <b>Isotyp:</b><br>IgG1  | <b>Berechnete Masse:</b><br>60 kDa  | <b>IHC 1:250-1:1000</b>  |
| <b>Immunogen Katalognummer:</b><br>AG1593   | <b>Beobachtete Masse:</b><br>65 kDa   | <b>IF 1:200-1:800</b>  |

## Anwendungen

### Geprüfte Anwendungen:

IF, IHC, IP, WB, ELISA

### Getestete Reaktivität:

Human, Maus, Ratte

**Hinweis-IHC: Antigenmaskierung mit TE-Puffer pH 9,0 empfohlen. (\*) Wahlweise kann die Antigenmaskierung auch mit Citratpuffer pH 6,0 erfolgen.**

### Positivkontrollen:

**WB** : HeLa-Zellen, A431-Zellen, HEK-293-Zellen, Jurkat-Zellen, NIH/3T3-Zellen, RAW 264.7-Zellen

**IP** : HEK-293-Zellen,

**IHC** : Maushirngewebe, humanes Pankreasgewebe

**IF** : Maushirngewebe,

## Hintergrundinformationen

RIC8A, also named as synembryn-A, is a Guanine nucleotide exchange factor (GEF), which can activate some, but not all, G-alpha proteins by exchanging bound GDP for free GTP. It is involved in regulation of microtubule pulling forces during mitotic movement of chromosomes by stimulating G(i)-alpha protein, possibly leading to release G(i)-alpha-GTP and NuMA proteins from the NuMA-GPSM2-G(i)-alpha-GDP complex. RIC8A also acts as an activator for G(q)-alpha (GNAQ) protein by enhancing the G(q)-coupled receptor-mediated ERK activation.

## Lagerung

### Lagerungsbedingungen:

Bei -20°C lagern. Nach dem Versand ein Jahr lang stabil

### Lagerungspuffer:

PBS mit 0.02% Natriumazid und 50% Glycerin pH 7.3.

Aliquotieren ist nicht notwendig bei -20°C Lagerung

**\*\*\* 20ul-Größen enthalten 0.1% BSA**

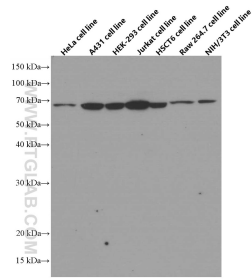
For technical support and original validation data for this product please contact:

T: 1 (888) 4PTGLAB (1-888-478-4522) (toll free in USA), or 1(312) 455-8498 (outside USA)

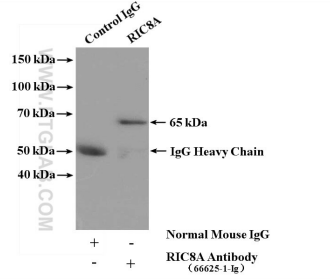
E: [proteintech@ptglab.com](mailto:proteintech@ptglab.com)  
W: [ptglab.com](http://ptglab.com)

**This product is exclusively available under Proteintech Group brand and is not available to purchase from any other manufacturer.**

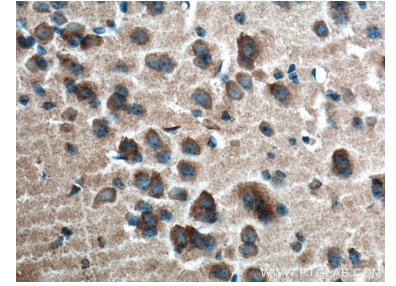
## Ausgewählte Validierungsdaten



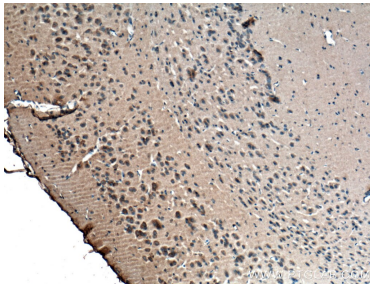
Various lysates were subjected to SDS PAGE followed by western blot with 66625-1-Ig (RIC8A antibody) at dilution of 1:5000 incubated at room temperature for 1.5 hours.



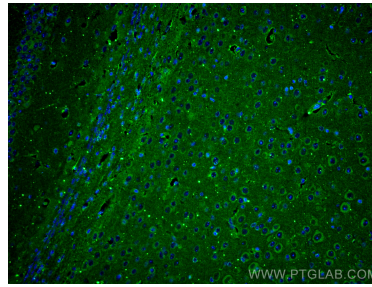
IP result of anti-RIC8A (IP:66625-1-Ig, 5ug; Detection:66625-1-Ig 1:2000) with HEK-293 cells lysate 4000 ug.



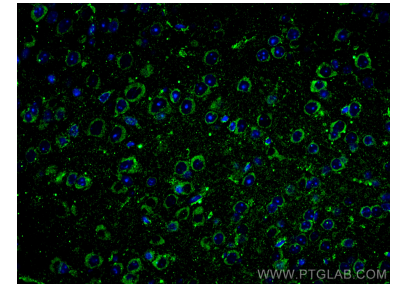
Immunohistochemical analysis of paraffin-embedded mouse brain tissue slide using 66625-1-Ig (RIC8A antibody) at dilution of 1:500 (under 10x lens. Heat mediated antigen retrieval with Tris-EDTA buffer (pH 9.0).



Immunohistochemical analysis of paraffin-embedded mouse brain tissue slide using 66625-1-Ig (RIC8A antibody) at dilution of 1:500 (under 40x lens. Heat mediated antigen retrieval with Tris-EDTA buffer (pH 9.0).



Immunofluorescent analysis of (4% PFA) fixed mouse brain tissue using RIC8A antibody (66625-1-Ig, Clone: 1E3B11 ) at dilution of 1:400 and CoraLite@488-Conjugated AffiniPure Goat Anti-Mouse IgG(H+L).



Immunofluorescent analysis of (4% PFA) fixed mouse brain tissue using RIC8A antibody (66625-1-Ig, Clone: 1E3B11 ) at dilution of 1:400 and CoraLite@488-Conjugated AffiniPure Goat Anti-Mouse IgG(H+L).