

Nur für Forschungszwecke

# FAF2 Monoklonaler Antikörper

Katalog-Nr.:66629-1-Ig

Vorgestelltes Produkt



## Allgemeine Informationen

<b>Katalog-Nr.:</b> 66629-1-Ig	<b>GenBank-Zugangsnummer:</b> BC014001	<b>Reinigungsmethode:</b> Protein-G-Reinigung
<b>Größe:</b> 150ul, Konzentration: 1700 µg/ml von 23197 Nanodrop und 1000 µg/ml durch die Bradford-Methode mit BSA als Standard;	<b>GeneID (NCBI):</b> 2	<b>CloneNo.:</b> 3H6D2
<b>Wirt:</b> Maus	<b>Vollständiger Name:</b> Fas associated factor family member 2	<b>Empfohlene Verdünnungen:</b> WB 1:2000-1:10000 IHC 1:250-1:1000 IF 1:400-1:1600
<b>Isotyp:</b> IgG1	<b>Berechnete Masse:</b> 445 aa, 53 kDa	
<b>Immunogen Katalognummer:</b> AG21536	<b>Beobachtete Masse:</b> 51 kDa	

## Anwendungen

### Geprüfte Anwendungen:

IF, IHC, WB, ELISA

### Getestete Reaktivität:

Human, Maus

**Hinweis-IHC: Antigenmaskierung mit TE-Puffer pH 9,0 empfohlen. (\*) Wahlweise kann die Antigenmaskierung auch mit Citratpuffer pH 6,0 erfolgen.**

### Positivkontrollen:

**WB:** HeLa-Zellen, HEK-293-Zellen, HepG2-Zellen

**IHC:** humanes Mammakarzinomgewebe, Maushirngewebe

**IF:** HEK-293-Zellen,

## Hintergrundinformationen

Protein ETEA (FAF2, or UBXD8) is a homolog to Fas-associated factor 1 (FAF1), which is involved in Fas-mediated apoptosis. ETEA protein directly interacts with and negatively regulates neurofibromin. ETEA contains both UBA and UBX domains and overexpression of ETEA downregulates neurofibromin in human cells. It may play a role in the translocation of terminally misfolded proteins from the endoplasmic reticulum lumen to the cytoplasm and their degradation by the proteasome. ETEA is highly expressed in peripheral blood of patients with atopic dermatitis (AD) compared to normal individuals, and may regulate the resistance to apoptosis that is observed in T cells and eosinophils of AD patients.

## Lagerung

### Lagerungsbedingungen:

Bei -20°C lagern. Nach dem Versand ein Jahr lang stabil

### Lagerungspuffer:

PBS mit 0.02% Natriumazid und 50% Glycerin pH 7.3.

Aliquotieren ist nicht notwendig bei -20°C Lagerung

\*\*\* 20ul-Größen enthalten 0.1% BSA

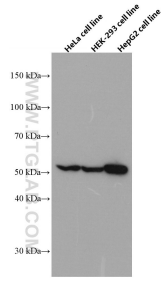
For technical support and original validation data for this product please contact:

T: 1 (888) 4PTGLAB (1-888-478-4522) (toll free in USA), or 1(312) 455-8498 (outside USA)

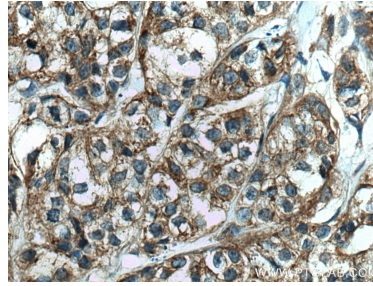
E: proteintech@ptglab.com  
W: ptglab.com

This product is exclusively available under Proteintech Group brand and is not available to purchase from any other manufacturer.

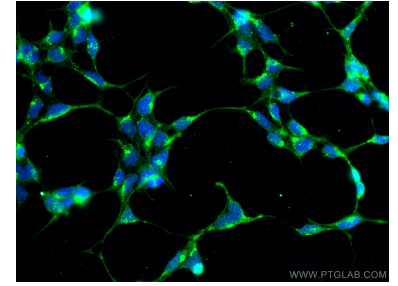
## Ausgewählte Validierungsdaten



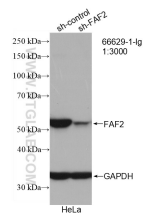
HeLa cells were subjected to SDS PAGE followed by western blot with 66629-1-Ig (FAF2 antibody) at dilution of 1:5000 incubated at room temperature for 1.5 hours.



Immunohistochemical analysis of paraffin-embedded human breast cancer tissue slide using 66629-1-Ig (FAF2 antibody) at dilution of 1:500 (under 40x lens). Heat mediated antigen retrieval with Tris-EDTA buffer (pH 9.0).



Immunofluorescent analysis of (-20°C Ethanol) fixed HEK-293 cells using FAF2 antibody (66629-1-Ig, Clone: 3H6D2) at dilution of 1:800 and CoraLite®488-Conjugated AffiniPure Goat Anti-Mouse IgG(H+L).



WB result of FAF2 antibody (66629-1-Ig; 1:3000; incubated at room temperature for 1.5 hours) with sh-Control and sh-FAF2 transfected HeLa cells.