

## Allgemeine Informationen

|   |   |   |
|---|---|---|
| <b>Katalog-Nr.:</b><br>66635-1-Ig   | <b>GenBank-Zugangsnummer:</b><br>BC009428   | <b>Reinigungsmethode:</b><br>Protein-G-Reinigung  |
| <b>Größe:</b><br>150ul , Konzentration: 1200 µg/ml von51024<br>Nanodrop und 1000 µg/ml durch die<br>Bradford-Methode mit BSA als<br>Standard; | <b>GeneID (NCBI):</b><br>51024  | <b>CloneNo.:</b><br>2F10E1  |
| <b>Wirt:</b><br>Maus  | <b>Vollständiger Name:</b><br>fission 1 (mitochondrial outer<br>membrane) homolog (S. cerevisiae) | <b>Empfohlene Verdünnungen:</b><br>WB 1:2000-1:10000<br>IHC 1:250-1:1000<br>IF 1:50-1:500 |
| <b>Isotyp:</b><br>IgG1  | <b>Berechnete Masse:</b><br>17 kDa  |   |
| <b>Immunogen Katalognummer:</b><br>AG1409   | <b>Beobachtete Masse:</b><br>15 kDa   |   |

## Anwendungen

### Geprüfte Anwendungen:

IF, IHC, WB, ELISA

### In Publikationen genannte Anwendungen:

IF, IHC, WB

### Getestete Reaktivität:

Human

### Zitierte Arten:

Fisch, Human, Maus, Ratte

**Hinweis-IHC: Antigendemaskierung mit TE-Puffer pH 9,0 empfohlen. (\*) Wahlweise kann die Antigendemaskierung auch mit Citratpuffer pH 6,0 erfolgen.**

### Positivkontrollen:

**WB** : HEK-293-Zellen, HeLa-Zellen, HepG2-Zellen, Jurkat-Zellen, K-562-Zellen, LNCaP-Zellen, MCF-7-Zellen

**IHC** : humanes Mammakarzinomgewebe, humanes Ovarialkarzinomgewebe, humanes Prostatakarzinomgewebe

**IF** : HepG2-Zellen,

## Hintergrundinformationen

Fis1 (fission 1) is an integral mitochondrial outer membrane protein that participates in mitochondrial fission by interacting with dynamin-related protein 1 (Drp1). Excessive mitochondrial fission is associated with the pathology of a number of neurodegenerative or neurodevelopmental diseases. Increased expression of Fis1 has been found in Huntington's disease (HD)-affected brain, Alzheimer's disease (AD) patients, and autism spectrum disorder. (21257639, 21459773, 23333625)

## Bemerkenswerte Veröffentlichungen

| Verfasser      | Pubmed ID | Journal           | Anwendung |
|----------------|-----------|-------------------|-----------|
| YUE LI         | 34470980  | Biol Pharm Bull   | IF        |
| Xiao-Lin Jiang | 36309912  | Aging (Albany NY) | WB        |
| Yujie Zhong    | 36501024  | Nutrients         | WB        |

## Lagerung

### Lagerungsbedingungen:

Bei -20°C lagern. Nach dem Versand ein Jahr lang stabil

### Lagerungspuffer:

PBS mit 0.02% Natriumazid und 50% Glycerin pH 7.3.

Aliquotieren ist nicht notwendig bei -20°C Lagerung

**\*\*\* 20ul-Größen enthalten 0.1% BSA**

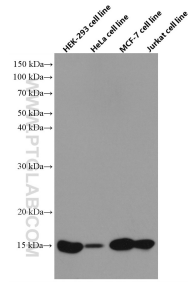
For technical support and original validation data for this product please contact:

T: 1 (888) 4PTGLAB (1-888-478-4522) (toll free in USA), or 1(312) 455-8498 (outside USA)

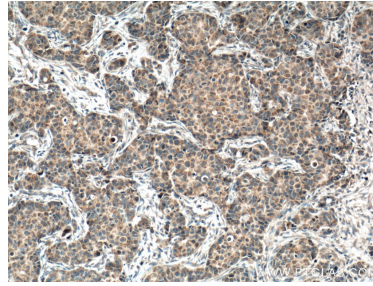
E: [proteintech@ptglab.com](mailto:proteintech@ptglab.com)  
W: [ptglab.com](http://ptglab.com)

**This product is exclusively available under Proteintech Group brand and is not available to purchase from any other manufacturer.**

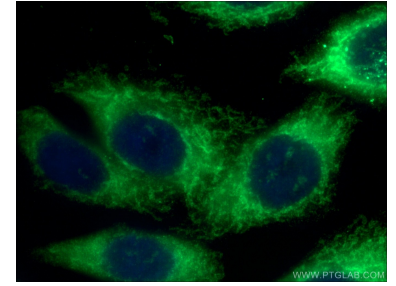
## Ausgewählte Validierungsdaten



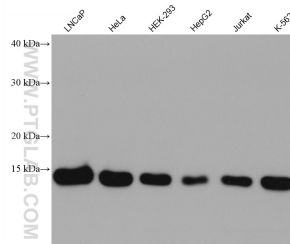
Various cells were subjected to SDS PAGE followed by western blot with 66635-1-Ig (FIS1 antibody) at dilution of 1:5000 incubated at room temperature for 1.5 hours.



Immunohistochemical analysis of paraffin-embedded human breast cancer tissue slide using 66635-1-Ig (FIS1 antibody) at dilution of 1:500 (under 10x lens. Heat mediated antigen retrieval with Tris-EDTA buffer (pH 9.0)).



Immunofluorescent analysis of (4% PFA) fixed HepG2 cells using 66635-1-Ig (FIS1 antibody) at dilution of 1:100 and Alexa Fluor 488-Conjugated AffiniPure Goat Anti-Rabbit IgG(H+L).



Various lysates were subjected to SDS PAGE followed by western blot with 66635-1-Ig (FIS1 antibody) at dilution of 1:10000 incubated at room temperature for 1.5 hours.