

Allgemeine Informationen

Katalog-Nr.:

66645-1-Ig

Größe:

150ul , Konzentration: 1700 µg/ml von7097

Nanodrop und 1000 µg/ml durch die Bradford-Methode mit BSA als Standard;

Wirt:

Maus

Isotyp:

IgG2a

Immunogen Katalognummer:

AG25626

GenBank-Zugangsnummer:

BC033756

GeneID (NCBI):

von7097

Vollständiger Name:

toll-like receptor 2

Berechnete Masse:

784 aa, 90 kDa

Beobachtete Masse:

90-100 kDa

Reinigungsmethode:

Protein-A-Reinigung

CloneNo.:

1C1D3

Empfohlene Verdünnungen:

WB 1:500-1:2000

Anwendungen

Geprüfte Anwendungen:

WB,ELISA

In Publikationen genannte Anwendungen:

Cell treatment, IHC, WB

Getestete Reaktivität:

Human

Zitierte Arten:

Hausschwein, Human, Maus, Ratte

Positivkontrollen:

WB : THP-1-Zellen, U-937-Zellen

Hintergrundinformationen

TLR2, also known as CD282, is a member of the Toll-like receptor (TLR) family. TLR receptors are type I integral transmembrane glycoproteins which play a fundamental role in pathogen recognition and activation of innate immunity. TLR2 is expressed by immune cells including monocytes/macrophages, polymorphonuclear leukocytes (PMLs) and dendritic cells, and is also expressed by some non-immune cells including endothelial and epithelial cells (PMID: 21428911; 22566960). TLR2 forms heterodimers with TLR1 and TLR6, which is the initial step in a cascade of events leading to significant innate immune responses, development of adaptive immunity to pathogens and protection from immune sequelae related to infection with these pathogens (PMID: 22566960).

Bemerkenswerte Veröffentlichungen

Verfasser	Pubmed ID	Journal	Anwendung
Xiaotong Xu	36188596	Front Pharmacol	WB
Zhenglin Chang	36389789	Front Immunol	IHC
Sairong Fan	34658894	Front Pharmacol	WB,Cell treatment

Lagerung

Lagerungsbedingungen:

Bei -20°C lagern. Nach dem Versand ein Jahr lang stabil

Lagerungspuffer:

PBS mit 0.02% Natriumazid und 50% Glycerin pH 7.3.

Aliquotieren ist nicht notwendig bei -20°C Lagerung

*** 20ul-Größen enthalten 0.1% BSA

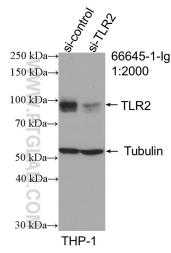
For technical support and original validation data for this product please contact:

T: 1 (888) 4PTGLAB (1-888-478-4522) (toll free in USA), or 1(312) 455-8498 (outside USA)

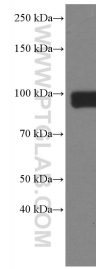
E: proteintech@ptglab.com
W: ptglab.com

This product is exclusively available under Proteintech Group brand and is not available to purchase from any other manufacturer.

Ausgewählte Validierungsdaten



WB result of TLR2 antibody (66645-1-Ig; 1:2000; incubated at room temperature for 1.5 hours) with sh-Control and sh-TLR2 transfected THP-1 cells.



THP-1 cells were subjected to SDS PAGE followed by western blot with 66645-1-Ig (TLR2 antibody) at dilution of 1:2000 incubated at room temperature for 1.5 hours.