

Nur für Forschungszwecke

XRCC2 Monoklonaler Antikörper

Katalog-Nr.:66652-1-Ig



Allgemeine Informationen

Katalog-Nr.: 66652-1-Ig	GenBank-Zugangsnummer: BC042137	Reinigungsmethode: Protein-A-Reinigung
Größe: 150ul , Konzentration: 2000 µg/ml von7516 Nanodrop und 1000 µg/ml durch die Bradford-Methode mit BSA als Standard;	GeneID (NCBI): Vollständiger Name: X-ray repair complementing defective repair in Chinese hamster cells 2	CloneNo.: 3D9A1 Empfohlene Verdünnungen: WB 1:1000-1:4000 IF 1:50-1:500
Wirt: Maus	Berechnete Masse: 280 aa, 32 kDa	
Isotyp: IgG2b	Beobachtete Masse: 32 kDa	
Immunogen Katalognummer: AG14421		

Anwendungen

Geprüfte Anwendungen: FC, IF, WB, ELISA	Positivkontrollen: WB : HEK-293-Zellen, NIH/3T3-Zellen, Raji-Zellen IF : HepG2-Zellen,
Getestete Reaktivität: Human, Maus	

Hintergrundinformationen

XRCC2, also named as DNA repair protein XRCC2, is a 280 amino acid protein, which belongs to the RecA family. XRCC2 is involved in the homologous recombination repair (HRR) pathway of double-stranded DNA, thought to repair chromosomal fragmentation, translocations and deletions. XRCC2 is a part of the Rad21 paralog protein complex BCDX2 which acts in the BRCA1-BRCA2-dependent HR pathway.

Lagerung

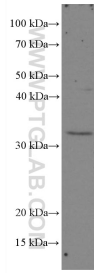
Lagerungsbedingungen:
Bei -20°C lagern. Nach dem Versand ein Jahr lang stabil
Lagerungspuffer:
PBS mit 0.02% Natriumazid und 50% Glycerin pH 7.3.
Aliquotieren ist nicht notwendig bei -20°C Lagerung

***** 20ul-Größen enthalten 0.1% BSA**

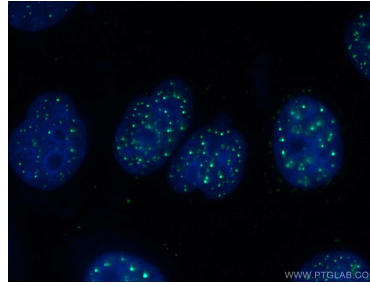
For technical support and original validation data for this product please contact:
T: 1 (888) 4PTGLAB (1-888-478-4522) (toll free in USA), or 1(312) 455-8498 (outside USA)
E: proteintech@ptglab.com
W: ptglab.com

This product is exclusively available under Proteintech Group brand and is not available to purchase from any other manufacturer.

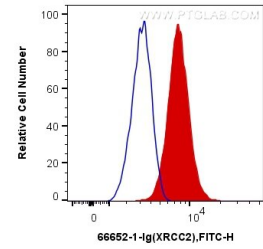
Ausgewählte Validierungsdaten



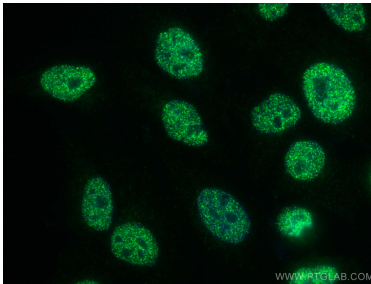
HEK-293 cells were subjected to SDS PAGE followed by western blot with 66652-1-Ig (XRCC2 antibody) at dilution of 1:2000 incubated at room temperature for 1.5 hours.



Immunofluorescent analysis of (-20°C Ethanol) fixed HepG2 cells using 66652-1-Ig (XRCC2 antibody) at dilution of 1:100 and Alexa Fluor 488-Conjugated AffiniPure Goat Anti-Mouse IgG(H+L).



1X10⁶ HepG2 cells were intracellularly stained with 0.4 ug Anti-Human XRCC2 (66652-1-Ig, Clone:3D9A1) and CoraLite®488-Conjugated AffiniPure Goat Anti-Mouse IgG(H+L) at dilution 1:1000 (red), or 0.4 ug Control Antibody. Cells were fixed and permeabilized with Transcription Factor Staining Buffer Kit (PF00011).



Immunofluorescent analysis of (4% PFA) fixed HepG2 cells using XRCC2 antibody (66652-1-Ig, Clone: 3D9A1) at dilution of 1:400 and CoraLite®488-Conjugated AffiniPure Goat Anti-Mouse IgG(H+L).