

Nur für Forschungszwecke

# GOLGA2/GM130 Monoklonaler Antikörper



Katalog-Nr.: 66662-1-Ig

Vorgestelltes Produkt

5 Publikationen

## Allgemeine Informationen

<b>Katalog-Nr.:</b> 66662-1-Ig	<b>GenBank-Zugangsnummer:</b> BC014188	<b>Reinigungsmethode:</b> Protein-G-Reinigung
<b>Größe:</b> 150ul, Konzentration: 1000 µg/ml durch die Bradford-Methode mit BSA als Standard;	<b>GeneID (NCBI):</b> 2801	<b>CloneNo.:</b> 2A4F11
<b>Wirt:</b> Maus	<b>Vollständiger Name:</b> golgi autoantigen, golgin subfamily a, 2	<b>Empfohlene Verdünnungen:</b> WB 1:5000-1:50000
<b>Isotyp:</b> IgG1	<b>Berechnete Masse:</b> 111 kDa	
<b>Immunogen Katalognummer:</b> AG1848	<b>Beobachtete Masse:</b> 130 kDa	

## Anwendungen

<b>Geprüfte Anwendungen:</b> WB, ELISA	<b>Positivkontrollen:</b> WB : LNCaP-Zellen, HEK-293-Zellen, HeLa-Zellen, HepG2-Zellen, Jurkat-Zellen, K-562-Zellen, PC-12-Zellen
<b>In Publikationen genannte Anwendungen:</b> WB	
<b>Getestete Reaktivität:</b> Human, Ratte	
<b>Zitierte Arten:</b> Human, Maus, Ratte	

## Hintergrundinformationen

GOLGA2, also known as GM130, is a 130 kDa cis-Golgi matrix protein which is one component of the detergent and salt resistant Golgi matrix. It is a peripheral membrane protein highly bound to Golgi membrane and localized mainly at the cytoplasmic face of cis-Golgi membrane. Together with its interacting partner proteins, including p115, giantin, GRASP65, and Rab GTPase, GOLGA2/GM130 is involved in the regulation of ER-to-Golgi transport and also in the maintenance of the Golgi structure. Emerging evidence suggest that the GOLGA2/GM130 has potential roles in the control of glycosylation, cell cycle progression, and higher order cell functions such as cell polarization and directed cell migration. (PMID: 20197635)

## Bemerkenswerte Veröffentlichungen

Verfasser	Pubmed ID	Journal	Anwendung
Xiaoliang Tan	36136987	Anticancer Drugs	WB
Nan Zhou	35174212	Front Mol Biosci	WB
Han Zeng	34974159	Mol Metab	WB

## Lagerung

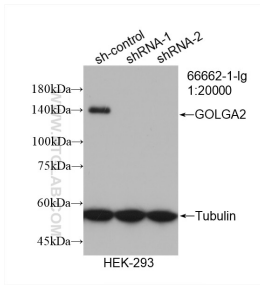
**Lagerungsbedingungen:**  
Bei -20°C lagern. Nach dem Versand ein Jahr lang stabil  
**Lagerungspuffer:**  
PBS mit 0.02% Natriumazid und 50% Glycerin pH 7.3.  
Aliquotieren ist nicht notwendig bei -20°C Lagerung

\*\*\* 20ul-Größen enthalten 0.1% BSA

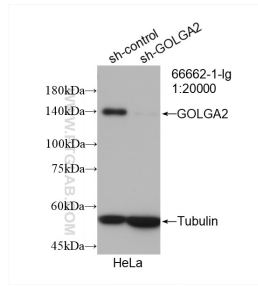
For technical support and original validation data for this product please contact:  
T: 1 (888) 4PTGLAB (1-888-478-4522) (toll free in USA), or 1(312) 455-8498 (outside USA)  
E: proteintech@ptglab.com  
W: ptglab.com

This product is exclusively available under Proteintech Group brand and is not available to purchase from any other manufacturer.

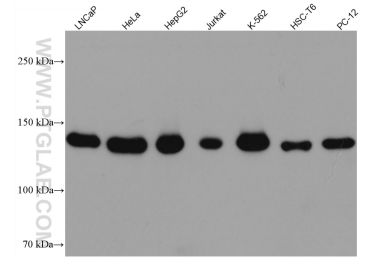
## Ausgewählte Validierungsdaten



WB result of GOLGA2/GM130 antibody (66662-1-Ig; 1:20000; incubated at room temperature for 1.5 hours) with sh-Control and sh-GOLGA2/GM130 transfected HEK-293 cells.



WB result of GOLGA2/GM130 antibody (66662-1-Ig; 1:20000; incubated at room temperature for 1.5 hours) with sh-Control and sh-GOLGA2/GM130 transfected HeLa cells.



Various lysates were subjected to SDS PAGE followed by western blot with 66662-1-Ig (GOLGA2/GM130 antibody) at dilution of 1:10000 incubated at room temperature for 1.5 hours.