

Allgemeine Informationen

Katalog-Nr.: 66671-1-Ig	GenBank-Zugangsnummer: BC010264	Reinigungsmethode: Protein-G-Reinigung
Größe: 150ul, Konzentration: 1000 µg/ml durch die Bradford-Methode mit BSA als Standard;	GeneID (NCBI): 6426	CloneNo.: 1A6C5
Wirt: Maus	Vollständiger Name: splicing factor, arginine/serine-rich 1	Empfohlene Verdünnungen: WB 1:5000-1:50000 IP 0.5-4.0 µg für IP und 1:2000-1:10000 für WB
Isotyp: IgG1	Berechnete Masse: 248 aa, 28 kDa	IHC 1:200-1:800
Immunogen Katalognummer: AG3626	Beobachtete Masse: 32 kDa, 28 kDa, 22 kDa	IF 1:200-1:800

Anwendungen

Geprüfte Anwendungen:

IF, IHC, IP, WB, ELISA

Getestete Reaktivität:

Human, Maus, Ratte

Hinweis-IHC: Antigendemaskierung mit TE-Puffer pH 9,0 empfohlen. (*) Wahlweise kann die Antigendemaskierung auch mit Citratpuffer pH 6,0 erfolgen.

Positivkontrollen:

WB : HeLa-Zellen, HEK-293-Zellen, HepG2-Zellen, Jurkat-Zellen, LNCaP-Zellen, NIH/3T3-Zellen, PC-12-Zellen, RAW 264.7-Zellen

IP : HeLa-Zellen,

IHC : humanes Ovarialkarzinomgewebe, humanes Gliomgewebe

IF : HepG2-Zellen,

Hintergrundinformationen

SFRS1, also named as ASF, SF2, SF2P33, SFRS1 and ASF-1, belongs to the splicing factor SR family. It plays a role in preventing exon skipping, ensuring the accuracy of splicing and regulating alternative splicing. SFRS1 interacts with other spliceosomal components, via the RS domains, to form a bridge between the 5'- and 3'-splice site binding components, U1 snRNP and U2AF. Isoform ASF-2 and isoform ASF-3 act as splicing repressors. This antibody can recognize all the 3 isoforms(28kd,33kd and 22kd) of SFRS1.

Lagerung

Lagerungsbedingungen:

Bei -20°C lagern. Nach dem Versand ein Jahr lang stabil

Lagerungspuffer:

PBS mit 0.02% Natriumazid und 50% Glycerin pH 7.3.

Aliquotieren ist nicht notwendig bei -20°C Lagerung

***** 20ul-Größen enthalten 0.1% BSA**

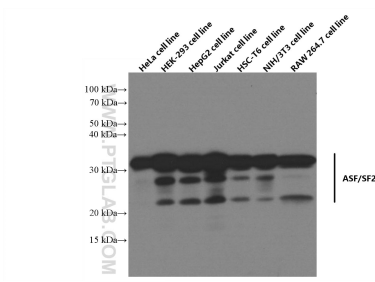
For technical support and original validation data for this product please contact:

T: 1 (888) 4PTGLAB (1-888-478-4522) (toll free in USA), or 1(312) 455-8498 (outside USA)

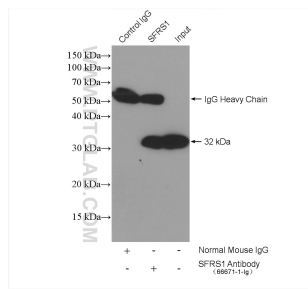
E: proteintech@ptglab.com
W: ptglab.com

This product is exclusively available under Proteintech Group brand and is not available to purchase from any other manufacturer.

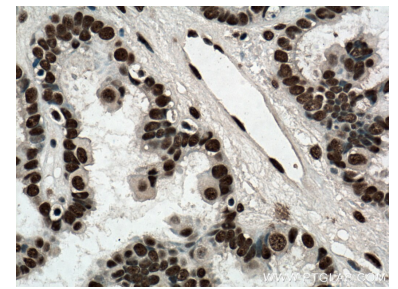
Ausgewählte Validierungsdaten



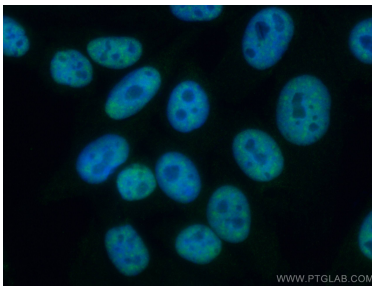
Various lysates were subjected to SDS PAGE followed by western blot with 66671-1-Ig (ASF/SF2 antibody) at dilution of 1:20000 incubated at room temperature for 1.5 hours.



IP result of anti-ASF/SF2 (IP:66671-1-Ig, 5ug; Detection:66671-1-Ig 1:5000) with HeLa cells lysate 2200 ug.



Immunohistochemical analysis of paraffin-embedded human ovary tumor tissue slide using 66671-1-Ig (ASF/SF2 antibody) at dilution of 1:400 (under 40x lens. Heat mediated antigen retrieval with Tris-EDTA buffer (pH 9.0)).



Immunofluorescent analysis of (4% PFA) fixed HepG2 cells using ASF/SF2 antibody (66671-1-Ig, Clone: 1A6C5) at dilution of 1:400 and CoraLite®488-Conjugated AffiniPure Goat Anti-Mouse IgG(H+L).