

Allgemeine Informationen

Katalog-Nr.: 66678-1-Ig	GenBank-Zugangsnummer: BC025672	Reinigungsmethode: Protein-A-Reinigung
Größe: 150ul , Konzentration: 1000 µg/ml durch die Bradford-Methode mit BSA als Standard;	GeneID (NCBI): 2346	CloneNo.: 3G4E12
Wirt: Maus	Vollständiger Name: folate hydrolase (prostate-specific membrane antigen) 1	Empfohlene Verdünnungen: WB 1:4000-1:10000 IHC 1:1000-1:4000 IF 1:200-1:800
Isotyp: IgG1	Berechnete Masse: 719 aa, 81 kDa	
Immunogen Katalognummer: AG16594	Beobachtete Masse: 100-120 kDa	

Anwendungen

Geprüfte Anwendungen: IF, IHC, WB, ELISA	Positivkontrollen: WB : LNCaP-Zellen, Rattennierengewebe
In Publikationen genannte Anwendungen: WB	IHC : humanes Prostatakarzinomgewebe,
Getestete Reaktivität: Human, Ratte	IF : humanes Prostatakarzinomgewebe,
Zitierte Arten: Human	
Hinweis-IHC: Antigenmaskierung mit TE-Puffer pH 9,0 empfohlen. (*) Wahlweise kann die Antigenmaskierung auch mit Citratpuffer pH 6,0 erfolgen.	

Hintergrundinformationen

PSMA(Prostate-specific membrane antigen) is also named as FOLH1, FOLH, NAALAD1, PSM and belongs to the peptidase M28 family. PSMA is a 100-120 kDa integral transmembrane glycoprotein, considered to be a highly specific marker of the prostate gland, and has successfully been used as a marker of circulating prostatic epithelial cells(PMID:10074909; 15680901). It is involved in conversion of the major neurotransmitter (NAA) to NAA and free glutamate. It has 8 isoforms produced by alternative splicing.

Bemerkenswerte Veröffentlichungen

Verfasser	Pubmed ID	Journal	Anwendung
Liyuan Yin	31988304	Sci Rep	WB

Lagerung

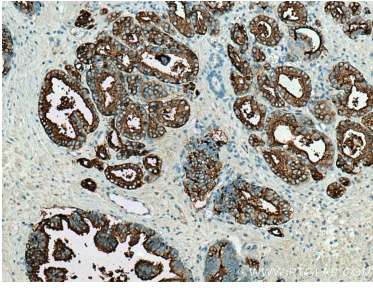
Lagerungsbedingungen:
Bei -20°C lagern. Nach dem Versand ein Jahr lang stabil
Lagerungspuffer:
PBS mit 0.02% Natriumazid und 50% Glycerin pH 7.3.
 Aliquotieren ist nicht notwendig bei -20°C Lagerung

***** 20ul-Größen enthalten 0.1% BSA**

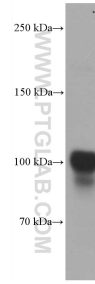
For technical support and original validation data for this product please contact:
 T: 1 (888) 4PTGLAB (1-888-478-4522) (toll free in USA), or 1(312) 455-8498 (outside USA)
 E: proteintech@ptglab.com
 W: ptglab.com

This product is exclusively available under Proteintech Group brand and is not available to purchase from any other manufacturer.

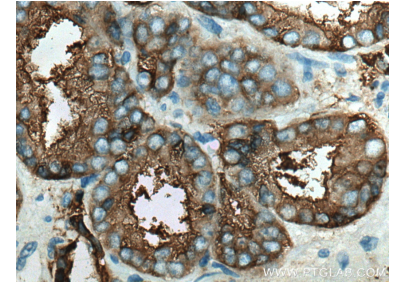
Ausgewählte Validierungsdaten



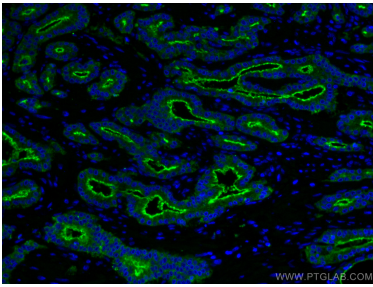
Immunohistochemical analysis of paraffin-embedded human prostate cancer tissue slide using 66678-1-Ig (PSMA/GCPII antibody) at dilution of 1:2000 (under 10x lens). Heat mediated antigen retrieval with Tris-EDTA buffer (pH 9.0).



LNCaP cells were subjected to SDS PAGE followed by western blot with 66678-1-Ig (FOLH1 antibody) at dilution of 1:8000 incubated at room temperature for 1.5 hours.



Immunohistochemical analysis of paraffin-embedded human prostate cancer tissue slide using 66678-1-Ig (PSMA/GCPII antibody) at dilution of 1:2000 (under 40x lens). Heat mediated antigen retrieval with Tris-EDTA buffer (pH 9.0).



Immunofluorescent analysis of (4% PFA) fixed human prostate cancer tissue using PSMA/GCPII antibody (66678-1-Ig, Clone: 3G4E12) at dilution of 1:400 and CoraLite®488-Conjugated AffiniPure Goat Anti-Mouse IgG(H+L).