

Nur für Forschungszwecke

ASGR1 Monoklonaler Antikörper

Katalog-Nr.:66692-1-Ig

Vorgestelltes Produkt



Allgemeine Informationen

Katalog-Nr.:

66692-1-Ig

Größe:

150ul , Konzentration: 1800 µg/ml von432

Nanodrop und 1000 µg/ml durch die Bradford-Methode mit BSA als Standard;

Wirt:

Maus

Isotyp:

IgG1

Immunogen Katalognummer:

AG2310

GenBank-Zugangsnummer:

BC032130

GeneID (NCBI):

Vollständiger Name:

asialoglycoprotein receptor 1

Berechnete Masse:

291 aa, 33 kDa

Beobachtete Masse:

42-46 kDa

Reinigungsmethode:

Protein-G-Reinigung

CloneNo.:

1G5F5

Empfohlene Verdünnungen:

WB 1:2000-1:10000

Anwendungen

Geprüfte Anwendungen:

WB, ELISA

Getestete Reaktivität:

Hausschwein, Human, Maus

Positivkontrollen:

WB : HuH-7-Zellen, Hausschwein-Lebergewebe, HepG2-Zellen, humanes Hodengewebe, LO2-Zellen

Hintergrundinformationen

Asialoglycoprotein receptor (ASGPR), also known as the hepatic galactose/N-acetylglucosamine (GlcNAc) receptor or Ashwell receptor, is a C-type lectin expressed exclusively in hepatic parenchymal cells. ASGPR consists of two subunits, a major subunit (ASGR1, HL-1) and a minor subunit (ASGR2, HL-2), and specifically recognizes terminal β -linked galactose or GlcNAc on circulating glycoproteins or cells. This receptor plays a critical role in serum glycoprotein homeostasis by mediating the endocytosis and lysosomal degradation of glycoproteins that contain terminal galactose or GlcNAc residues. ASGPR may facilitate hepatic infection by multiple viruses including hepatitis B, and is also a target for liver-specific drug delivery.

Lagerung

Lagerungsbedingungen:

Bei -20°C lagern. Nach dem Versand ein Jahr lang stabil

Lagerungspuffer:

PBS mit 0.02% Natriumazid und 50% Glycerin pH 7.3.

Aliquotieren ist nicht notwendig bei -20°C Lagerung

***** 20ul-Größen enthalten 0.1% BSA**

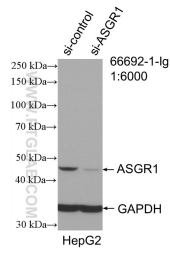
For technical support and original validation data for this product please contact:

T: 1 (888) 4PTGLAB (1-888-478-4522) (toll free in USA), or 1(312) 455-8498 (outside USA)

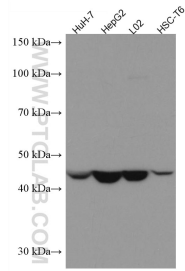
E: proteintech@ptglab.com
W: ptglab.com

This product is exclusively available under Proteintech Group brand and is not available to purchase from any other manufacturer.

Ausgewählte Validierungsdaten



WB result of ASGR1 antibody (66692-1-Ig; 1:6000; incubated at room temperature for 1.5 hours) with sh-Control and sh-ASGR1 transfected HepG2 cells.



Various lysates were subjected to SDS PAGE followed by western blot with 66692-1-Ig (ASGR1 antibody) at dilution of 1:5000 incubated at room temperature for 1.5 hours.