

Nur für Forschungszwecke

ACE2 Monoklonaler Antikörper

Katalog-Nr.:66699-1-Ig

Vorgestelltes Produkt

25 Publikationen



Allgemeine Informationen

Katalog-Nr.:
66699-1-Ig

Größe:
150ul, Konzentration: 1856 µg/ml von59272

Nanodrop und 1000 µg/ml durch die
Bradford-Methode mit BSA als
Standard;

Wirt:
Maus

Isotyp:
IgG1

Immunogen Katalognummer:
AG15554

GenBank-Zugangsnummer:
BC048094

GeneID (NCBI):

Vollständiger Name:
angiotensin I converting enzyme
(peptidyl-dipeptidase A) 2

Berechnete Masse:
805 aa, 92 kDa

Beobachtete Masse:
120 kDa, 92 kDa

Reinigungsmethode:
Protein-A-Reinigung

CloneNo.:
2F12A4

Empfohlene Verdünnungen:
WB 1:2000-1:6000
IHC 1:1000-1:4000
IF 1:200-1:800

Anwendungen

Geprüfte Anwendungen:

IF, IHC, WB, ELISA

In Publikationen genannte Anwendungen:

FC, IF, IHC, WB

Getestete Reaktivität:

Human

Zitierte Arten:

Human, Maus

Hinweis-IHC: Antigendemaskierung mit TE-Puffer pH 9,0 empfohlen. (*) Wahlweise kann die Antigendemaskierung auch mit Citratpuffer pH 6,0 erfolgen.

Positivkontrollen:

WB : humanes Hodengewebe, humanes
Skelettmuskulgewebe

IHC : humanes Dünndarmgewebe, humanes
Hodengewebe, humanes Kolongewebe, humanes
Nierengewebe

IF : humanes Nierengewebe, Mausnierengewebe

Hintergrundinformationen

ACE2 (Angiotensin-converting enzyme 2), also named as ACEH, is a zinc metalloprotease of the ACE family and a critical regulator of the reninangiotensin system. ACE2 has a more restricted tissue distribution than ACE, being found predominantly in the heart, kidneys, and testes although low levels have been detected in a variety of tissues (PMID:15983030). ACE2 has been shown to be a functional receptor of the human coronaviruses SARS-CoV and SARS-CoV-2 (PMID: 32142651). The expression level and expression pattern of human ACE2 in different tissues might be critical for the susceptibility, symptoms, and outcome of 2019-nCoV/SARS-CoV-2 infection (PMID: 32133153). It can be used as a potential therapeutic target of SARS-CoV-2 (PMID: 32125455). The calculated molecular weight of ACE2 is 92kDa but it migrates to 120kDa due to N-glycosylation (PMID:16166094). Sometimes, several cleaved fragments can also be detected as 75kDa, 50 kDa or 37kDa (PMID: 29561187, 22009550, 30759273). It has 2 isoforms produced by alternative splicing. This antibody is specific to ACE2. The location of ACE2 is membrane and cytoplasm, however it accumulates in the nucleus during the mitosis (PMID: 1730413/PMID: 18292088).

Bemerkenswerte Veröffentlichungen

Verfasser	Pubmed ID	Journal	Anwendung
Shunhua Long	36178477	Viral Immunol	IF
Shengjie Li	32991984	Ocul Surf	IHC
Ni Huang	33140061	medRxiv	WB, IF, FC

Lagerung

Lagerungsbedingungen:

Bei -20°C lagern. Nach dem Versand ein Jahr lang stabil

Lagerungspuffer:

PBS mit 0.02% Natriumazid und 50% Glycerin pH 7.3.

Aliquotieren ist nicht notwendig bei -20°C Lagerung

*** 20ul-Größen enthalten 0.1% BSA

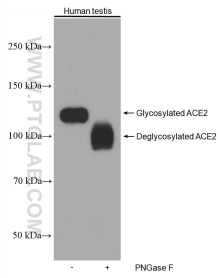
For technical support and original validation data for this product please contact:

T: 1 (888) 4PTGLAB (1-888-478-4522) (toll free
in USA), or 1(312) 455-8498 (outside USA)

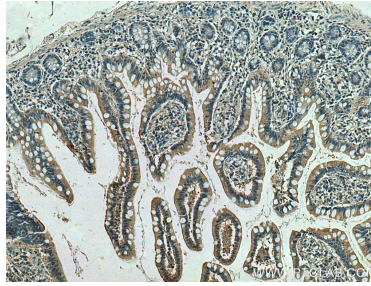
E: proteintech@ptglab.com
W: ptglab.com

This product is exclusively available under Proteintech Group brand and is not available to purchase from any other manufacturer.

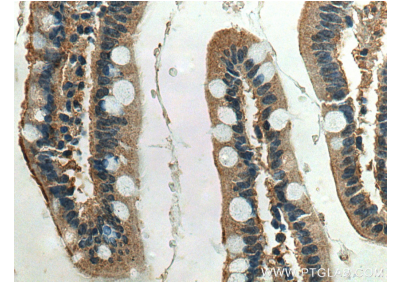
Ausgewählte Validierungsdaten



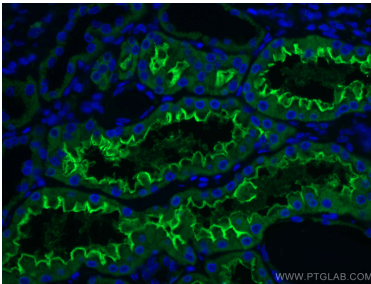
Untreated and PNGase F-treated lysates of human testis tissue were subjected to SDS PAGE followed by western blot with 66699-1-Ig (ACE2 antibody) at dilution of 1:3000 incubated at room temperature for 1.5 hours. PNGase F was obtained from Atagenix (cat.NO. ata808).



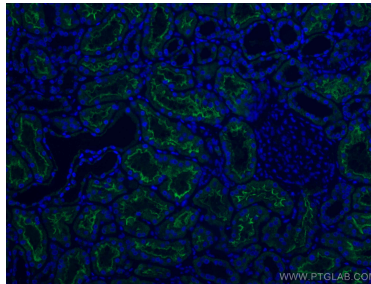
Immunohistochemical analysis of paraffin-embedded human small intestine tissue slide using 66699-1-Ig (ACE2 antibody) at dilution of 1:2000 (under 10x lens)..



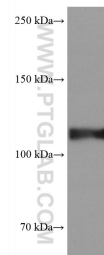
Immunohistochemical analysis of paraffin-embedded human small intestine tissue slide using 66699-1-Ig (ACE2 antibody) at dilution of 1:2000 (under 40x lens)..



Immunofluorescent analysis of (4% PFA) fixed human kidney tissue using ACE2 antibody (66699-1-Ig, Clone: 2F12A4) at dilution of 1:400 and CoraLite®488-Conjugated AffiniPure Goat Anti-Mouse IgG(H+L).



Immunofluorescent analysis of (4% PFA) fixed human kidney tissue using ACE2 antibody (66699-1-Ig, Clone: 2F12A4) at dilution of 1:400 and CoraLite®488-Conjugated AffiniPure Goat Anti-Mouse IgG(H+L).



human testis tissue were subjected to SDS PAGE followed by western blot with 66699-1-Ig (ACE2 antibody) at dilution of 1:5000 incubated at room temperature for 1.5 hours.