

Nur für Forschungszwecke

CD21 Monoklonaler Antikörper

Katalog-Nr.:66701-1-Ig



Allgemeine Informationen

Katalog-Nr.: 66701-1-Ig	GenBank-Zugangsnummer: BC136394	Reinigungsmethode: Protein-A-Reinigung
Größe: 150ul , Konzentration: 1500 µg/ml von1380 Nanodrop und 1000 µg/ml durch die Bradford-Methode mit BSA als Standard;	GeneID (NCBI): 1380	CloneNo.: 1D9A3
Wirt: Maus	Vollständiger Name: complement component (3d/Epstein Barr virus) receptor 2	Empfohlene Verdünnungen: WB 1:2000-1:10000
Isotyp: IgG2a	Berechnete Masse: 1092 aa, 119 kDa	
Immunogen Katalognummer: AG18058	Beobachtete Masse: 150 kDa	

Anwendungen

Geprüfte Anwendungen: WB, ELISA	Positivkontrollen: WB : humanes Milzgewebe,
Getestete Reaktivität: Human	

Hintergrundinformationen

CD21, also known as complement receptor type 2 (CR2), complement C3d receptor, and Epstein-Barr virus receptor, is a transmembrane protein that contains a small cytoplasmic domain, a transmembrane region and an extracellular domain consisting of 15 tandem short consensus repeat sequences (PMID: 6230668; 2551147). It is expressed on B cells, follicular dendritic cells, thymocytes and a subset of peripheral T cells (PMID: 26119182). CD21 binds complement fragments C3d, C3dg and iC3b and acts as a receptor for the Epstein-Barr virus (PMID: 7753047). On B cells, together with CD19 and CD81, CD21 forms a complex that functions as a co-receptor to the BCR (PMID: 7542009). It is involved in B cells activation and functions.

Lagerung

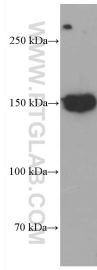
Lagerungsbedingungen:
Bei -20°C lagern. Nach dem Versand ein Jahr lang stabil
Lagerungspuffer:
PBS mit 0.02% Natriumazid und 50% Glycerin pH 7.3.
Aliquotieren ist nicht notwendig bei -20°C Lagerung

***** 20ul-Größen enthalten 0.1% BSA**

For technical support and original validation data for this product please contact:
T: 1 (888) 4PTGLAB (1-888-478-4522) (toll free in USA), or 1(312) 455-8498 (outside USA)
E: proteintech@ptglab.com
W: ptglab.com

This product is exclusively available under Proteintech Group brand and is not available to purchase from any other manufacturer.

Ausgewählte Validierungsdaten



human spleen tissue were subjected to SDS PAGE followed by western blot with 66701-1-Ig (CD21 antibody) at dilution of 1:5000 incubated at room temperature for 1.5 hours.