

Nur für Forschungszwecke

TPT1 Monoklonaler Antikörper

Katalog-Nr.: 66713-1-Ig

Vorgestelltes Produkt



Allgemeine Informationen

Katalog-Nr.: 66713-1-Ig	GenBank-Zugangsnummer: BC003352	Reinigungsmethode: Protein-G-Reinigung
Größe: 150ul, Konzentration: 1400 µg/ml von 7178 Nanodrop und 1000 µg/ml durch die Bradford-Methode mit BSA als Standard;	GeneID (NCBI): 150000	CloneNo.: 1G6A10
Wirt: Maus	Vollständiger Name: tumor protein, translationally- controlled 1	Empfohlene Verdünnungen: WB 1:5000-1:50000 IHC 1:500-1:2000 IF 1:50-1:500
Isotyp: IgG1	Berechnete Masse: 22 kDa	
Immunogen Katalognummer: AG27651	Beobachtete Masse: 22 kDa	

Anwendungen

Geprüfte Anwendungen: IF, IHC, WB, ELISA	Positivkontrollen: WB: Jurkat-Zellen, HeLa-Zellen, MCF-7-Zellen, NIH/3T3-Zellen, RAW 264.7-Zellen IHC: humanes Kolonkarzinomgewebe, IF: HEK-293-Zellen,
Getestete Reaktivität: Human, Maus, Ratte	
Hinweis-IHC: Antigendemaskierung mit TE-Puffer pH 9,0 empfohlen. (*) Wahlweise kann die Antigendemaskierung auch mit Citratpuffer pH 6,0 erfolgen.	

Hintergrundinformationen

The translationally controlled tumor protein (TPT1, also known as TCTP) is a highly conserved, abundantly expressed protein associated with cell growth and apoptosis regulation. It is overexpressed in most tumor cells and its down-regulation decreases the viability of those cells. This antibody detected 22 kDa TPT1 in lysates.

Lagerung

Lagerungsbedingungen:
Bei -20°C lagern. Nach dem Versand ein Jahr lang stabil
Lagerungspuffer:
PBS mit 0.02% Natriumazid und 50% Glycerin pH 7.3.
Aliquotieren ist nicht notwendig bei -20°C Lagerung

*** 20ul-Größen enthalten 0.1% BSA

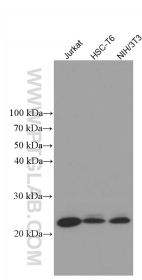
For technical support and original validation data for this product please contact:

T: 1 (888) 4PTGLAB (1-888-478-4522) (toll free in USA), or 1(312) 455-8498 (outside USA)

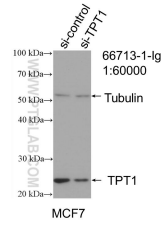
E: proteintech@ptglab.com
W: ptglab.com

This product is exclusively available under Proteintech Group brand and is not available to purchase from any other manufacturer.

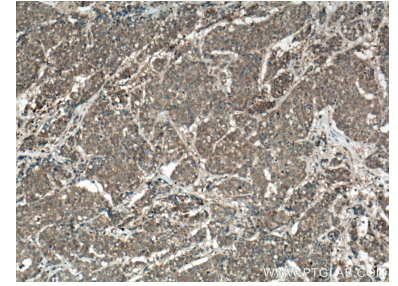
Ausgewählte Validierungsdaten



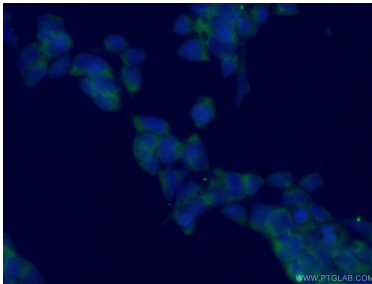
Various lysates were subjected to SDS PAGE followed by western blot with 66713-1-Ig (TPT1 antibody) at dilution of 1:10000 incubated at room temperature for 1.5 hours.



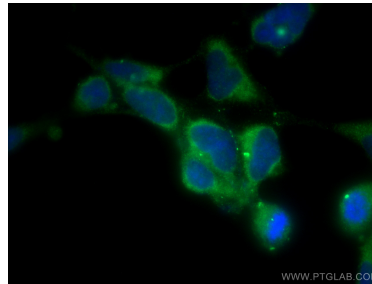
WB result of TPT1 antibody (66713-1-Ig; 1:60000; incubated at room temperature for 1.5 hours) with sh-Control and sh-TPT1 transfected MCF-7 cells.



Immunohistochemical analysis of paraffin-embedded human colon cancer tissue slide using 66713-1-Ig (TPT1 antibody) at dilution of 1:1000 (under 10x lens. Heat mediated antigen retrieval with Tris-EDTA buffer (pH 9.0).



Immunofluorescent analysis of (-20°C Ethanol) fixed HEK-293 cells using 66713-1-Ig (TPT1 antibody) at dilution of 1:100 and Alexa Fluor 488-Conjugated AffiniPure Goat Anti-Mouse IgG(H+L).



Immunofluorescent analysis of (-20°C Methanol) fixed HEK-293 cells using TPT1 antibody (66713-1-Ig, Clone: 1G6A10) at dilution of 1:400 and CoraLite® 488-Conjugated AffiniPure Goat Anti-Mouse IgG(H+L).