

Nur für Forschungszwecke

RHEB Monoklonaler Antikörper

Katalog-Nr.:66714-1-Ig



Allgemeine Informationen

Katalog-Nr.:

66714-1-Ig

Größe:

150ul, Konzentration: 1500 µg/ml von 6009

Nanodrop und 1000 µg/ml durch die Bradford-Methode mit BSA als Standard;

Wirt:

Maus

Isotyp:

IgG1

Immunogen Katalognummer:

AG8887

GenBank-Zugangsnummer:

BC016155

GeneID (NCBI):

6009

Vollständiger Name:

Ras homolog enriched in brain

Berechnete Masse:

184 aa, 20 kDa

Beobachtete Masse:

18 kDa

Reinigungsmethode:

Protein-G-Reinigung

CloneNo.:

2F9H8

Empfohlene Verdünnungen:

WB 1:1000-1:3000

IF 1:50-1:500

Anwendungen

Geprüfte Anwendungen:

IF, WB, ELISA

Getestete Reaktivität:

Human, Maus

Positivkontrollen:

WB : fetales humanes Hirngewebe, DU 145-Zellen, HeLa-Zellen, Maushirngewebe

IF : humanes Pankreaskarzinomgewebe, Maus-Pankreasgewebe

Hintergrundinformationen

Rheb is a member of the Ras superfamily small GTPases that plays important roles in the regulation of protein synthesis and growth in response to nutrient and growth factors. It is well known to bind and activate mTOR, a serine/threonine kinase which augments protein synthesis. Rheb has GTPase activity and shuttles between a GDP-bound form and a GTP-bound form, and farnesylation of the protein is required for this activity.

Lagerung

Lagerungsbedingungen:

Bei -20°C lagern. Nach dem Versand ein Jahr lang stabil

Lagerungspuffer:

PBS mit 0.02% Natriumazid und 50% Glycerin pH 7.3.

Aliquotieren ist nicht notwendig bei -20°C Lagerung

***** 20ul-Größen enthalten 0.1% BSA**

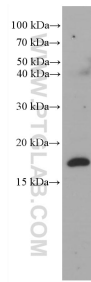
For technical support and original validation data for this product please contact:

T: 1 (888) 4PTGLAB (1-888-478-4522) (toll free in USA), or 1(312) 455-8498 (outside USA)

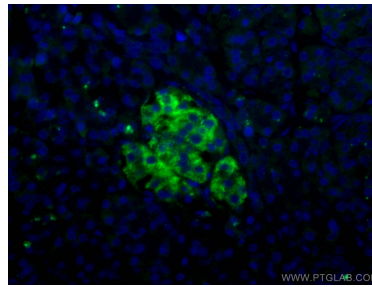
E: proteintech@ptglab.com
W: ptglab.com

This product is exclusively available under Proteintech Group brand and is not available to purchase from any other manufacturer.

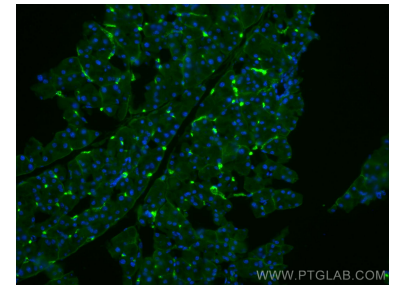
Ausgewählte Validierungsdaten



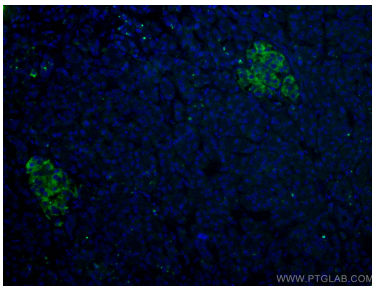
fetal human brain tissue were subjected to SDS PAGE followed by western blot with 66714-1-Ig (RHEB antibody) at dilution of 1:2000 incubated at room temperature for 1.5 hours.



Immunofluorescent analysis of (4% PFA) fixed human pancreas cancer tissue using RHEB antibody (66714-1-Ig, Clone: 2F9H8) at dilution of 1:200 and CoraLite®488-Conjugated AffiniPure Goat Anti-Mouse IgG(H+L).



Immunofluorescent analysis of (4% PFA) fixed mouse pancreas tissue using RHEB antibody (66714-1-Ig, Clone: 2F9H8) at dilution of 1:400 and CoraLite®488-Conjugated AffiniPure Goat Anti-Mouse IgG(H+L).



Immunofluorescent analysis of (4% PFA) fixed human pancreas cancer tissue using RHEB antibody (66714-1-Ig, Clone: 2F9H8) at dilution of 1:200 and CoraLite®488-Conjugated AffiniPure Goat Anti-Mouse IgG(H+L).