

Nur für Forschungszwecke

Placental lactogen Monoklonaler Antikörper

Katalog-Nr.:66728-1-Ig



Allgemeine Informationen

Katalog-Nr.: 66728-1-Ig	GenBank-Zugangsnummer: BC022044	Reinigungsmethode: Protein-A-Reinigung
Größe: 150ul , Konzentration: 1000 µg/ml von1443 Nanodrop und 860 µg/ml durch die Bradford-Methode mit BSA als Standard;	GeneID (NCBI): 150443	CloneNo.: 1D11E4
Wirt: Maus	Vollständiger Name: chorionic somatomammotropin hormone 2	Empfohlene Verdünnungen: WB 1:1000-1:6000 IHC 1:150-1:600
Isotyp: IgG3	Berechnete Masse: 217 aa, 25 kDa	
Immunogen Katalognummer: AG9412	Beobachtete Masse: 25 kDa	

Anwendungen

Geprüfte Anwendungen: IHC, WB, ELISA	Positivkontrollen: WB : humanes Plazenta-Gewebe, IHC : humanes Plazenta-Gewebe,
Getestete Reaktivität: Human	
Hinweis-IHC: Antigenmaskierung mit TE-Puffer pH 9,0 empfohlen. (*) Wahlweise kann die Antigenmaskierung auch mit Citratpuffer pH 6,0 erfolgen.	

Hintergrundinformationen

The human growth hormone (GH) locus is comprised by two GH (GH1 and GH2) genes and three chorionic somatomammotropin (CSH1, CSH2 and CSH-L) genes. Placental lactogens (CSH1, CSH2) are produced in the mammalian placenta and are similar in structure and function to growth hormones. Together, placental lactogens and growth factors play an essential role to assure successful lactation after pregnancy. Placental lactogens also modify the metabolic state of the mother during pregnancy to supply energy to the fetus. Both CSH1 and CSH2 can be detected by this antibody.

Lagerung

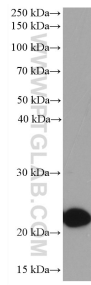
Lagerungsbedingungen:
Bei -20°C lagern. Nach dem Versand ein Jahr lang stabil
Lagerungspuffer:
PBS mit 0.02% Natriumazid und 50% Glycerin pH 7.3.
Aliquotieren ist nicht notwendig bei -20°C Lagerung

***** 20ul-Größen enthalten 0.1% BSA**

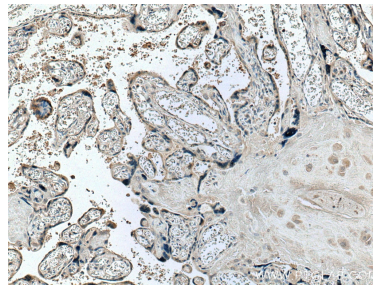
For technical support and original validation data for this product please contact:
T: 1 (888) 4PTGLAB (1-888-478-4522) (toll free in USA), or 1(312) 455-8498 (outside USA)
E: proteintech@ptglab.com
W: ptglab.com

This product is exclusively available under Proteintech Group brand and is not available to purchase from any other manufacturer.

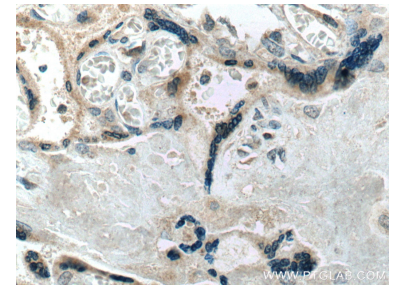
Ausgewählte Validierungsdaten



human placenta tissue were subjected to SDS PAGE followed by western blot with 66728-1-Ig (Placental lactogen antibody) at dilution of 1:3000 incubated at room temperature for 1.5 hours.



Immunohistochemical analysis of paraffin-embedded human placenta tissue slide using 66728-1-Ig (Placental lactogen antibody) at dilution of 1:300 (under 10x lens. Heat mediated antigen retrieval with Tris-EDTA buffer (pH 9.0).



Immunohistochemical analysis of paraffin-embedded human placenta tissue slide using 66728-1-Ig (Placental lactogen antibody) at dilution of 1:300 (under 40x lens. Heat mediated antigen retrieval with Tris-EDTA buffer (pH 9.0).