

Nur für Forschungszwecke

IL-1 Beta Monoklonaler Antikörper

Katalog-Nr.:66737-1-Ig

Vorgestelltes Produkt

55 Publikationen



Allgemeine Informationen

Katalog-Nr.: 66737-1-Ig	GenBank-Zugangsnummer: BC008678	Reinigungsmethode: Protein-G-Reinigung
Größe: 150ul, Konzentration: 1000 µg/ml durch die Bradford-Methode mit BSA als Standard;	GeneID (NCBI): 3553	CloneNo.: 2A1B4
Wirt: Maus	Vollständiger Name: interleukin 1, beta	Empfohlene Verdünnungen: WB 1:1000-1:6000 IHC 1:50-1:500
Isotyp: IgG1	Berechnete Masse: 269 aa, 31 kDa	
Immunogen Katalognummer: AG26030	Beobachtete Masse: 35 kDa	

Anwendungen

Geprüfte Anwendungen: FC, IHC, WB, ELISA	Positivkontrollen: WB : A431-Zellen, U-87 MG-Zellen
In Publikationen genannte Anwendungen: Cell treatment, ELISA, IF, IHC, IP, WB	IHC : humanes Lungenkarzinomgewebe, humanes Hautkrebsgewebe
Getestete Reaktivität: Human	
Zitierte Arten: Human, Rind	
Hinweis-IHC: Antigenmaskierung mit TE-Puffer pH 9,0 empfohlen. (*) Wahlweise kann die Antigenmaskierung auch mit Citratpuffer pH 6,0 erfolgen.	

Hintergrundinformationen

Interleukin-1, produced mainly by blood monocytes, mediates the panoply of host reactions collectively known as acute phase response. It is identical to endogenous pyrogen. The multiple biologic activities that define IL1 are properties of a 15- to 18-kD protein that is derived from a 30- to 35-kD precursor. Interleukin 1β (IL-1β) is a member of the interleukin 1 cytokine family. It is a pro-inflammatory cytokine against infection, playing an important role in the pathogenesis of cancers. It signals through various adaptor proteins and kinases that lead to activation of numerous downstream targets. The expression level of IL-1β is very low.

Bemerkenswerte Veröffentlichungen

Verfasser	Pubmed ID	Journal	Anwendung
Jinghong Zhong	36177510	J Biochem Mol Toxicol	Cell treatment
Yingying Wang	36174863	Int J Biol Macromol	WB
Yuan Gao	34630116	Front Pharmacol	WB,ELISA

Lagerung

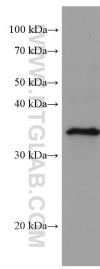
Lagerungsbedingungen:
Bei -20°C lagern. Nach dem Versand ein Jahr lang stabil
Lagerungspuffer:
PBS mit 0.02% Natriumazid und 50% Glycerin pH 7.3.
Aliquotieren ist nicht notwendig bei -20°C Lagerung

*** 20ul-Größen enthalten 0.1% BSA

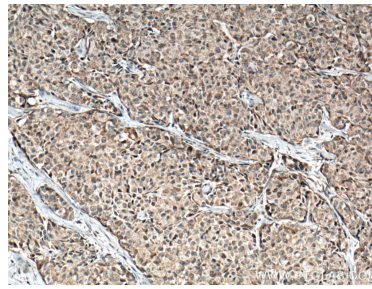
For technical support and original validation data for this product please contact:
T: 1 (888) 4PTGLAB (1-888-478-4522) (toll free in USA), or 1(312) 455-8498 (outside USA)
E: proteintech@ptglab.com
W: ptglab.com

This product is exclusively available under Proteintech Group brand and is not available to purchase from any other manufacturer.

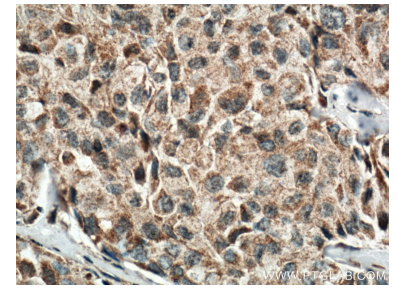
Ausgewählte Validierungsdaten



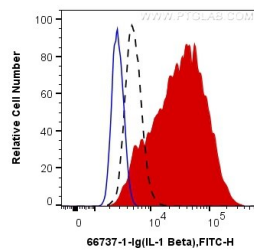
A431 cells were subjected to SDS PAGE followed by western blot with 66737-1-Ig (IL-1 Beta antibody) at dilution of 1:4000 incubated at room temperature for 1.5 hours.



Immunohistochemical analysis of paraffin-embedded human lung cancer tissue slide using 66737-1-Ig (IL1 beta antibody) at dilution of 1:200 (under 10x lens. Heat mediated antigen retrieval with Tris-EDTA buffer (pH 9.0).



Immunohistochemical analysis of paraffin-embedded human lung cancer tissue slide using 66737-1-Ig (IL1 beta antibody) at dilution of 1:200 (under 40x lens. Heat mediated antigen retrieval with Tris-EDTA buffer (pH 9.0).



1X10⁶ THP-1 cells untreated (dashed lines), LPS treated (red) were intracellularly stained with 0.4 ug Anti-Human IL-1 Beta (66737-1-Ig, Clone:2A1B4) and CoraLite®488-Conjugated AffiniPure Goat Anti-Mouse IgG(H+L) at dilution 1:1000, or 0.4 ug Control Antibody (blue). Cells were fixed with 4% PFA and permeabilized with Flow Cytometry Perm Buffer (PF00011-C).