

Nur für Forschungszwecke

BACH1 Monoklonaler Antikörper

Katalog-Nr.:66762-1-Ig

Vorgestelltes Produkt

1 Publikationen



Allgemeine Informationen

Katalog-Nr.: 66762-1-Ig	GenBank-Zugangsnummer: BC063307	Reinigungsmethode: Protein-G-Reinigung
Größe: 150ul , Konzentration: 1400 µg/ml von571 Nanodrop und 1000 µg/ml durch die Bradford-Methode mit BSA als Standard;	GeneID (NCBI): Vollständiger Name: BTB and CNC homology 1, basic leucine zipper transcription factor 1	CloneNo.: 2D12A4 Empfohlene Verdünnungen: WB 1:1000-1:6000 IHC 1:50-1:500
Wirt: Maus	Berechnete Masse: 82 kDa	
Isotyp: IgG1	Beobachtete Masse: 100-110 kDa	
Immunogen Katalognummer: AG6011		

Anwendungen

Geprüfte Anwendungen: IHC, WB, ELISA	Positivkontrollen: WB : HeLa-Zellen, Hausschwein-Hirngewebe, HEK-293-Zellen, Jurkat-Zellen, K-562-Zellen, Kaninchenhirngewebe, Maushirngewebe, Raji-Zellen, Rattenhirngewebe
In Publikationen genannte Anwendungen: WB	IHC : humanes Lungenkarzinomgewebe,
Getestete Reaktivität: Hausschwein, Human, Kaninchen, Maus, Ratte	
Zitierte Arten: Human	
Hinweis-IHC: Antigenmaskierung mit TE-Puffer pH 9,0 empfohlen. (*) Wahlweise kann die Antigenmaskierung auch mit Citratpuffer pH 6,0 erfolgen.	

Hintergrundinformationen

BTB and CNC homology 1, basic leucine zipper transcription factor 1(BACH1) is a heme-regulated transcriptional regulator that acts as a repressor or activator and a member of the AP-2 superfamily. MafK belongs to the small Maf family that can function as transcriptional activators or repressors depending on the proteins with which they form heterodimers. BACH1 has crucial roles in both stress responses and transformation by H-RasV12. The molecular weight of expected mobility Bach1 is 100-110 kDa.

Bemerkenswerte Veröffentlichungen

Verfasser	Pubmed ID	Journal	Anwendung
Kenshiro Takemoto	36178067	Cancer Sci	WB

Lagerung

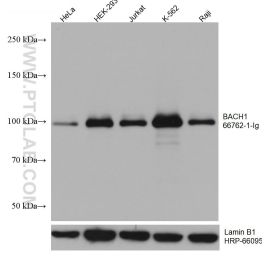
Lagerungsbedingungen:
Bei -20°C lagern. Nach dem Versand ein Jahr lang stabil
Lagerungspuffer:
PBS mit 0.02% Natriumazid und 50% Glycerin pH 7.3.
Aliquotieren ist nicht notwendig bei -20°C Lagerung

*** 20ul-Größen enthalten 0.1% BSA

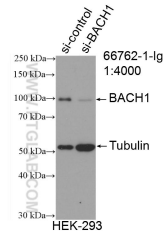
For technical support and original validation data for this product please contact:
T: 1 (888) 4PTGLAB (1-888-478-4522) (toll free in USA), or 1(312) 455-8498 (outside USA)
E: proteintech@ptglab.com
W: ptglab.com

This product is exclusively available under Proteintech Group brand and is not available to purchase from any other manufacturer.

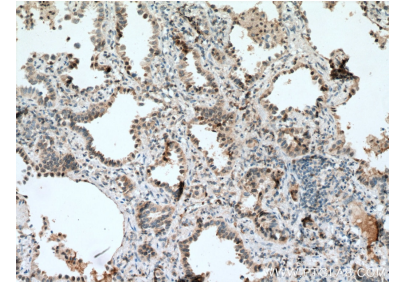
Ausgewählte Validierungsdaten



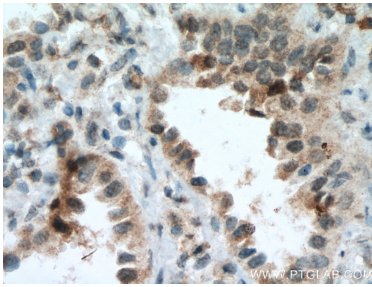
Various lysates were subjected to SDS PAGE followed by western blot with 66762-1-Ig (BACH1 antibody) at dilution of 1:3000 incubated at room temperature for 1.5 hours. The membrane was stripped and reblotted with HRP-conjugated Lamin B1 Monoclonal antibody (HRP-66095) as loading control.



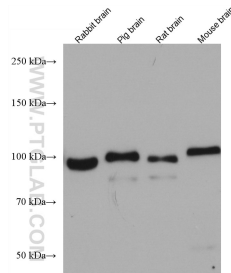
WB result of BACH1 antibody (66762-1-Ig; 1:4000; incubated at room temperature for 1.5 hours) with sh-Control and sh-BACH1 transfected HEK-293 cells.



Immunohistochemical analysis of paraffin-embedded human lung cancer tissue slide using 66762-1-Ig (BACH1 antibody) at dilution of 1:100 (under 10x lens. Heat mediated antigen retrieval with Tris-EDTA buffer (pH 9.0).



Immunohistochemical analysis of paraffin-embedded human lung cancer tissue slide using 66762-1-Ig (BACH1 antibody) at dilution of 1:100 (under 40x lens. Heat mediated antigen retrieval with Tris-EDTA buffer (pH 9.0).



Various lysates were subjected to SDS PAGE followed by western blot with 66762-1-Ig (BACH1 antibody) at dilution of 1:3000 incubated at room temperature for 1.5 hours.