

Allgemeine Informationen

Katalog-Nr.: 66765-1-Ig	GenBank-Zugangsnummer: BC112219	Reinigungsmethode: Protein-G-Reinigung
Größe: 150ul , Konzentration: 1500 µg/ml von847 Nanodrop und 1000 µg/ml durch die Bradford-Methode mit BSA als Standard;	GeneID (NCBI): von847	CloneNo.: 1F8D7
Wirt: Maus	Vollständiger Name: catalase	Empfohlene Verdünnungen: WB 1:5000-1:50000 IHC 1:100-1:500 IF 1:50-1:500
Isotyp: IgG1	Berechnete Masse: 60 kDa	
Immunogen Katalognummer: AG16916	Beobachtete Masse: 60 kDa	

Anwendungen

Geprüfte Anwendungen: IF, IHC, WB, ELISA	Positivkontrollen:
In Publikationen genannte Anwendungen: IF, WB	WB : HeLa-Zellen, Hausschwein-Hirngewebe, HEK-293-Zellen, HepG2-Zellen, Jurkat-Zellen, Maushirngewebe, NIH/3T3-Zellen, Rattenhirngewebe
Getestete Reaktivität: Hausschwein, Human, Maus, Ratte	IHC : humanes Leberzirrhosegewebe,
Zitierte Arten: Hausschwein, Human, Maus, Ratte, Ziege	IF : HepG2-Zellen,
Hinweis-IHC: Antigendemaskierung mit TE-Puffer pH 9,0 empfohlen. (*) Wahlweise kann die Antigendemaskierung auch mit Citratpuffer pH 6,0 erfolgen.	

Hintergrundinformationen

Catalase belongs to the catalase family. CAT occurs in almost all aerobically respiring organisms and serves to protect cells from the toxic effects of hydrogen peroxide. CAT promotes growth of cells including T-cells, B-cells, myeloid leukemia cells, melanoma cells, mastocytoma cells and normal and transformed fibroblast cells. CAT catalyzes the reaction: $2 \text{H}_2\text{O}_2 = \text{O}_2 + 2 \text{H}_2\text{O}$. Defects in CAT are the cause of acatalasia (ACATLAS) which also known as acatalasemia.

Bemerkenswerte Veröffentlichungen

Verfasser	Pubmed ID	Journal	Anwendung
Qin Li	36410421	Am J Pathol	WB
Jian Xiao	31144242	Sci China Life Sci	
Jing Li	33774368	Theriogenology	WB

Lagerung

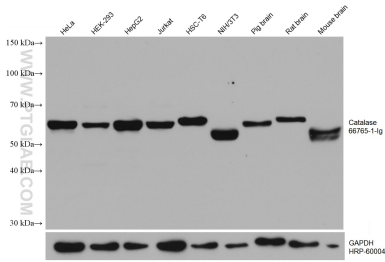
Lagerungsbedingungen:
Bei -20°C lagern. Nach dem Versand ein Jahr lang stabil
Lagerungspuffer:
PBS mit 0.02% Natriumazid und 50% Glycerin pH 7.3.
Aliquotieren ist nicht notwendig bei -20°C Lagerung

***** 20ul-Größen enthalten 0.1% BSA**

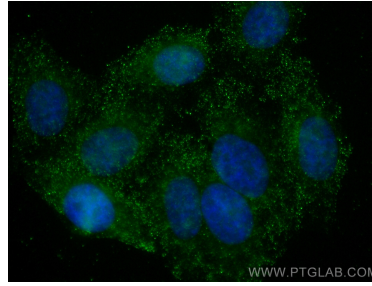
For technical support and original validation data for this product please contact:
T: 1 (888) 4PTGLAB (1-888-478-4522) (toll free in USA), or 1(312) 455-8498 (outside USA)
E: proteintech@ptglab.com
W: ptglab.com

This product is exclusively available under Proteintech Group brand and is not available to purchase from any other manufacturer.

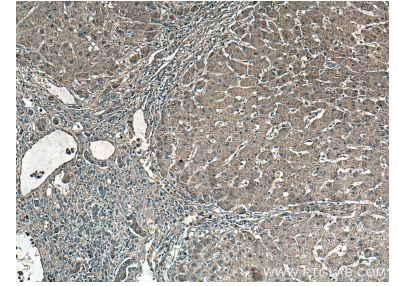
Ausgewählte Validierungsdaten



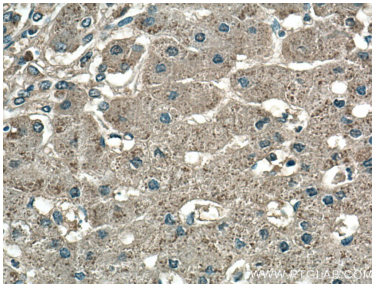
Various lysates were subjected to SDS PAGE followed by western blot with 66765-1-Ig (Catalase antibody) at dilution of 1:10000 incubated at room temperature for 1.5 hours. The membrane was stripped and reblotted with HRP-conjugated GAPDH Monoclonal antibody (HRP-60004) as loading control.



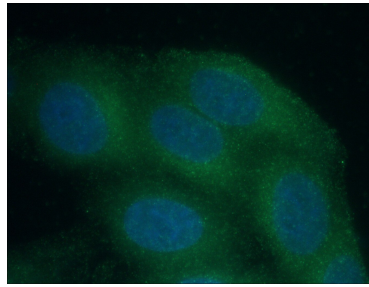
Immunofluorescent analysis of (4% PFA) fixed HepG2 cells using Catalase antibody (66765-1-Ig, Clone: 1F8D7) at dilution of 1:400 and CoraLite®488-Conjugated AffiniPure Goat Anti-Mouse IgG(H+L).



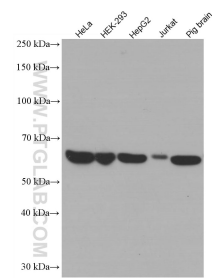
Immunohistochemical analysis of paraffin-embedded human hepatocirrhosis tissue slide using 66765-1-Ig (Catalase antibody) at dilution of 1:500 (under 10x lens).



Immunohistochemical analysis of paraffin-embedded human hepatocirrhosis tissue slide using 66765-1-Ig (Catalase antibody) at dilution of 1:500 (under 40x lens).



Immunofluorescent analysis of (-20°C Ethanol) fixed HepG2 cells using 66765-1-Ig (Catalase antibody) at dilution of 1:50 and Alexa Fluor 488-Conjugated AffiniPure Goat Anti-Mouse IgG(H+L).



Various lysates were subjected to SDS PAGE followed by western blot with 66765-1-Ig (Catalase antibody) at dilution of 1:5000 incubated at room temperature for 1.5 hours.