

Allgemeine Informationen

Katalog-Nr.: 66768-1-Ig	GenBank-Zugangsnummer: BC015503	Reinigungsmethode: Protein-A-Reinigung
Größe: 150ul, Konzentration: 1500 µg/ml von10551 Nanodrop und 933 µg/ml durch die Bradford-Methode mit BSA als Standard;	GeneID (NCBI): 10551	CloneNo.: 1A8A8
Wirt: Maus	Vollständiger Name: anterior gradient homolog 2 (Xenopus laevis)	Empfohlene Verdünnungen: WB 1:1000-1:6000 IHC 1:150-1:600 IF 1:400-1:1600
Isotyp: IgG2b	Berechnete Masse: 175 aa, 20 kDa	
Immunogen Katalognummer: AG2919	Beobachtete Masse: 17 kDa	

Anwendungen

Geprüfte Anwendungen: FC, IF, IHC, WB, ELISA	Positivkontrollen:
In Publikationen genannte Anwendungen: WB	WB: Hausschwein-Magengewebe, HT-29-Zellen, T-47D-Zellen
Getestete Reaktivität: Hausschwein, Human	IHC: humanes Mammakarzinomgewebe,
Zitierte Arten: Human	IF: HT-29-Zellen, humanes Kolonkarzinomgewebe

Hinweis-IHC: Antigenmaskierung mit TE-Puffer pH 9,0 empfohlen. (*) Wahlweise kann die Antigenmaskierung auch mit Citratpuffer pH 6,0 erfolgen.

Hintergrundinformationen

AGR2, also named AG2 or HPC8, encodes anterior gradient protein 2 homolog which belongs to the AGR family. It is a secreted protein localized in endoplasmic reticulum. AGR2 plays roles in MUC2 post-transcriptional synthesis, secretion and production of mucus by intestinal cells. AGR2 was significantly elevated in the pancreatic juice from patients with pre-malignant conditions as well as pancreatic cancer compared to control pancreatic juice samples. AGR2 levels in pancreatic juice could potentially be used to aide in assessment of high-risk patients undergoing endoscopic procedures.

Bemerkenswerte Veröffentlichungen

Verfasser	Pubmed ID	Journal	Anwendung
Haihua Zhang	35600368	Front Oncol	WB
Bingqiu Xiu	31856843	Mol Cancer	WB

Lagerung

Lagerungsbedingungen:
Bei -20°C lagern. Nach dem Versand ein Jahr lang stabil
Lagerungspuffer:
PBS mit 0.02% Natriumazid und 50% Glycerin pH 7.3.
Aliquotieren ist nicht notwendig bei -20°C Lagerung

***** 20ul-Größen enthalten 0.1% BSA**

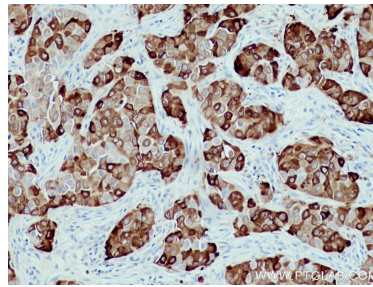
For technical support and original validation data for this product please contact:
T: 1 (888) 4PTGLAB (1-888-478-4522) (toll free in USA), or 1(312) 455-8498 (outside USA)
E: proteintech@ptglab.com
W: ptglab.com

This product is exclusively available under Proteintech Group brand and is not available to purchase from any other manufacturer.

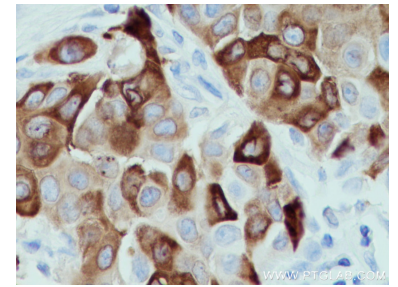
Ausgewählte Validierungsdaten



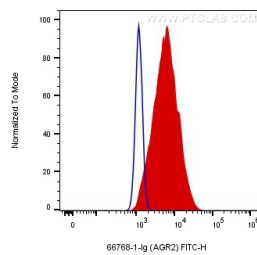
pig stomach tissue were subjected to SDS PAGE followed by western blot with 66768-1-Ig (AGR2 antibody) at dilution of 1:3000 incubated at room temperature for 1.5 hours.



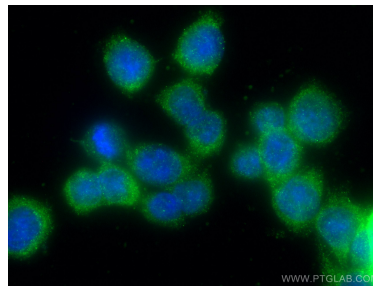
Immunohistochemical analysis of paraffin-embedded human breast cancer tissue slide using 66768-1-Ig (AGR2 antibody) at dilution of 1:300 (under 10x lens. Heat mediated antigen retrieval with Tris-EDTA buffer (pH 9.0).



Immunohistochemical analysis of paraffin-embedded human breast cancer tissue slide using 66768-1-Ig (AGR2 antibody) at dilution of 1:300 (under 40x lens. Heat mediated antigen retrieval with Tris-EDTA buffer (pH 9.0).



1X10⁶ HT-29 cells were intracellularly stained with 0.2 ug Anti-Human AGR2 (66768-1-Ig, Clone:1A8A8) and Coralite®488-Conjugated AffiniPure Goat Anti-Mouse IgG(H+L) at dilution 1:1000 (red), and 0.2 ug Mouse IgG2b Isotype Control (66360-3-Ig, Clone: K11B8C4B5) (blue). Cells were fixed with 4% PFA and permeabilized with 0.1% TritonX-100.



Immunofluorescent analysis of (-20°C Ethanol) fixed HT-29 cells using AGR2 antibody (66768-1-Ig, Clone: 1A8A8) at dilution of 1:800 and Coralite®488-Conjugated AffiniPure Goat Anti-Mouse IgG(H+L).