

Nur für Forschungszwecke

Glycophorin A Monoklonaler Antikörper



Katalog-Nr.:66778-1-Ig

Allgemeine Informationen

Katalog-Nr.: 66778-1-Ig	GenBank-Zugangsnummer: BC005319	Reinigungsmethode: Protein-G-Reinigung
Größe: 150ul , Konzentration: 1200 µg/ml von2993 Nanodrop und 1000 µg/ml durch die Bradford-Methode mit BSA als Standard;	GeneID (NCBI): Vollständiger Name: glycophorin A (MNS blood group)	CloneNo.: 2B12G10
Wirt: Maus	Berechnete Masse: 150 aa, 16 kDa	Empfohlene Verdünnungen: WB 1:2000-1:6000 IHC 1:10000-1:40000 IF 1:200-1:800
Isotyp: IgG1	Beobachtete Masse: 36-38 kDa	
Immunogen Katalognummer: AG8635		

Anwendungen

Geprüfte Anwendungen: FC, IF, IHC, WB, ELISA	Positivkontrollen:
Getestete Reaktivität: Human	WB : humanes Blutgewebe,
Hinweis-IHC: Antigendemaskierung mit TE-Puffer pH 9,0 empfohlen. (*) Wahlweise kann die Antigendemaskierung auch mit Citratpuffer pH 6,0 erfolgen.	IHC : humanes Plazenta-Gewebe, humanes Magenkrebsgewebe, humanes Milzgewebe
	IF : humanes Plazenta-Gewebe,

Hintergrundinformationen

Glycophorin A (GYPA) is the major transmembrane sialoglycoprotein in erythrocytes. It is a dimeric type I transmembrane protein carrying 15 closely clustered O-linked tetrasaccharides capped with sialic acid/N-acetylneuraminic acid (Neu5Ac). This 36 kDa protein represents the major sialoglycoprotein of the red blood cell membrane displaying about one million copies per cell. (PMID: 9490702)

Lagerung

Lagerungsbedingungen:
Bei -20°C lagern. Nach dem Versand ein Jahr lang stabil
Lagerungspuffer:
PBS mit 0.02% Natriumazid und 50% Glycerin pH 7.3.
Aliquotieren ist nicht notwendig bei -20°C Lagerung

*** 20ul-Größen enthalten 0.1% BSA

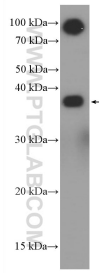
For technical support and original validation data for this product please contact:

T: 1 (888) 4PTGLAB (1-888-478-4522) (toll free in USA), or 1(312) 455-8498 (outside USA)

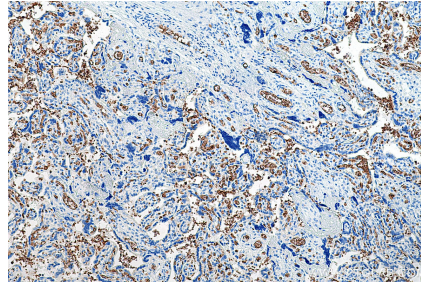
E: proteintech@ptglab.com
W: ptglab.com

This product is exclusively available under Proteintech Group brand and is not available to purchase from any other manufacturer.

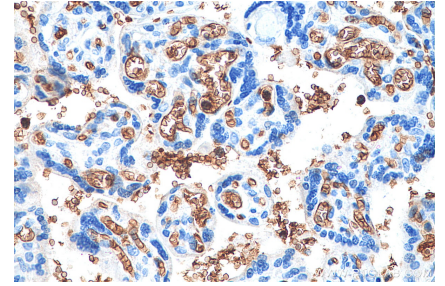
Ausgewählte Validierungsdaten



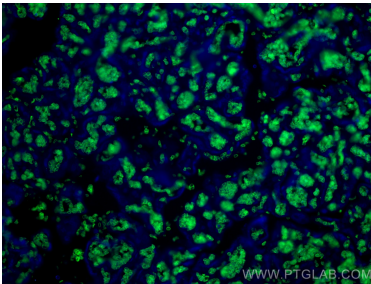
human blood were subjected to SDS PAGE followed by western blot with 66778-1-Ig (GYPA antibody) at dilution of 1:5000 incubated at room temperature for 1.5 hours.



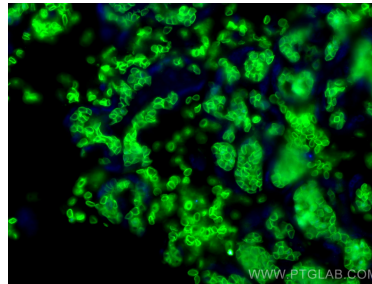
Immunohistochemical analysis of paraffin-embedded human placenta tissue slide using 66778-1-Ig (Glycophorin A antibody) at dilution of 1:20000 (under 10x lens). Heat mediated antigen retrieval with Tris-EDTA buffer (pH 9.0).



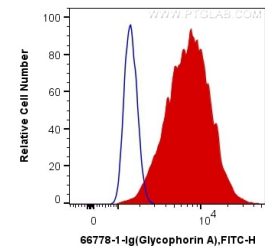
Immunohistochemical analysis of paraffin-embedded human placenta tissue slide using 66778-1-Ig (Glycophorin A antibody) at dilution of 1:20000 (under 40x lens). Heat mediated antigen retrieval with Tris-EDTA buffer (pH 9.0).



Immunofluorescent analysis of (4% PFA) fixed human placenta tissue using Glycophorin A antibody (66778-1-Ig, Clone: 2B12G10) at dilution of 1:400 and CoraLite®488-Conjugated AffiniPure Goat Anti-Mouse IgG(H+L).



Immunofluorescent analysis of (4% PFA) fixed human placenta tissue using Glycophorin A antibody (66778-1-Ig, Clone: 2B12G10) at dilution of 1:400 and CoraLite®488-Conjugated AffiniPure Goat Anti-Mouse IgG(H+L).



1×10^6 K-562 cells were intracellularly stained with 0.4 μ g Anti-Human Glycophorin A (66778-1-Ig, Clone:2B12G10) and CoraLite®488-Conjugated AffiniPure Goat Anti-Mouse IgG(H+L) at dilution 1:1000 (red), or 0.4 μ g Control Antibody. Cells were fixed with 4% PFA and permeabilized with Flow Cytometry Perm Buffer (PF00011-C).