

Nur für Forschungszwecke

COMP Monoklonaler Antikörper

Katalog-Nr.:66793-1-Ig



Allgemeine Informationen

Katalog-Nr.: 66793-1-Ig	GenBank-Zugangsnummer: BC033676	Reinigungsmethode: Protein-G-Reinigung
Größe: 150ul , Konzentration: 1500 µg/ml von Nanodrop und 1000 µg/ml durch die Bradford-Methode mit BSA als Standard;	GeneID (NCBI): 1311	CloneNo.: 1D7A6
Wirt: Maus	Vollständiger Name: cartilage oligomeric matrix protein	Empfohlene Verdünnungen: WB 1:500-1:2000
Isotyp: IgG1	Berechnete Masse: 757 aa, 83 kDa	
Immunogen Katalognummer: AG4575	Beobachtete Masse: 100-130 kDa	

Anwendungen

Geprüfte Anwendungen: WB,ELISA	Positivkontrollen: WB : Hausschwein-Knorpelgewebe,
Getestete Reaktivität: Hausschwein, Human	

Hintergrundinformationen

COMP is a secreted pentameric glycoprotein built from modular units and belongs to the thrombospondin protein family. COMP is expressed by hypertrophic chondrocytes and osteoblasts during endochondral ossification, and its expression is increased during fracture healing. COMP is involved in the assembly of collagen fibrils and other structural matrix components. COMP interacts with a number of cartilage ECM proteins, including fibronectin, collagen I, II IX, XII, and XIV, matrilins, as well as proteoglycans such as aggrecan and others. This antibody got 100-130 kDa maybe due to glycosylation.

Lagerung

Lagerungsbedingungen:
Bei -20°C lagern. Nach dem Versand ein Jahr lang stabil
Lagerungspuffer:
PBS mit 0.02% Natriumazid und 50% Glycerin pH 7.3.
Aliquotieren ist nicht notwendig bei -20°C Lagerung

***** 20ul-Größen enthalten 0.1% BSA**

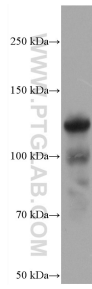
For technical support and original validation data for this product please contact:

T: 1 (888) 4PTGLAB (1-888-478-4522) (toll free
in USA), or 1(312) 455-8498 (outside USA)

E: proteintech@ptglab.com
W: ptglab.com

This product is exclusively available under Proteintech Group brand and is not available to purchase from any other manufacturer.

Ausgewählte Validierungsdaten



pig cartilage tissue were subjected to SDS PAGE followed by western blot with 66793-1-Ig (COMP antibody) at dilution of 1:1000 incubated at room temperature for 1.5 hours.