

Allgemeine Informationen

Katalog-Nr.: 66799-1-Ig	GenBank-Zugangsnummer: NM-009741	Reinigungsmethode: Protein-A-Reinigung
Größe: 150ul , Konzentration: 3000 µg/ml von12043 Nanodrop und 1387 µg/ml durch die Bradford-Methode mit BSA als Standard;	GeneID (NCBI): 12043	CloneNo.: 1B5B9
Wirt: Maus	Vollständiger Name: B-cell leukemia/lymphoma 2	Empfohlene Verdünnungen: WB 1:500-1:2000 IF 1:200-1:800
Isotyp: IgG1	Berechnete Masse: 26 kDa	
Immunogen Katalognummer: AG24261	Beobachtete Masse: 26 kDa	

Anwendungen

Geprüfte Anwendungen: FC, IF, WB, ELISA	Positivkontrollen: WB : NIH/3T3-Zellen, 4T1-Zellen, C2C12-Zellen, Maushirngewebe, RAW 264.7-Zellen
In Publikationen genannte Anwendungen: IP, WB	IF : NIH/3T3-Zellen,
Getestete Reaktivität: Maus	
Zitierte Arten: Human, Maus	

Hintergrundinformationen

Bcl2 is a member of the B cell lymphoma 2 protein family. Members of this family regulate cell death in multiple cell types and can have either proapoptotic or antiapoptotic activities. The protein encoded by this gene inhibits mitochondrial-mediated apoptosis. This protein is an integral outer mitochondrial membrane protein that functions as part of signaling pathway that controls mitochondrial permeability in response to apoptotic stimuli. This protein may also play a role in neuron cell survival and autophagy. Abnormal expression and chromosomal translocations of this gene are associated with cancer progression in numerous tissues.

Bemerkenswerte Veröffentlichungen

Verfasser	Pubmed ID	Journal	Anwendung
Chen Chen	30412827	Redox Biol	
Xiaohua Lei	32400797	Food Funct	WB
Ran Zhang	33979163	J Nat Prod	WB

Lagerung

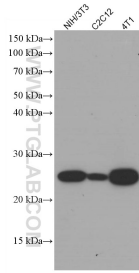
Lagerungsbedingungen:
Bei -20°C lagern. Nach dem Versand ein Jahr lang stabil
Lagerungspuffer:
PBS mit 0.02% Natriumazid und 50% Glycerin pH 7.3.
Aliquotieren ist nicht notwendig bei -20°C Lagerung

***** 20ul-Größen enthalten 0.1% BSA**

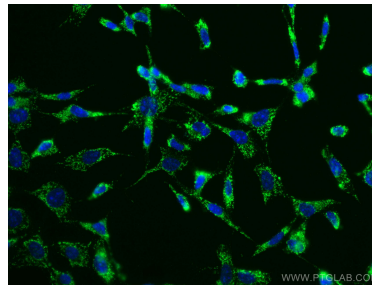
For technical support and original validation data for this product please contact:
T: 1 (888) 4PTGLAB (1-888-478-4522) (toll free in USA), or 1(312) 455-8498 (outside USA)
E: proteintech@ptglab.com
W: ptglab.com

This product is exclusively available under Proteintech Group brand and is not available to purchase from any other manufacturer.

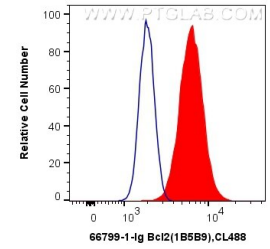
Ausgewählte Validierungsdaten



Various lysates were subjected to SDS PAGE followed by western blot with 66799-1-Ig (Bcl2 antibody) at dilution of 1:1400 incubated at room temperature for 1.5 hours.



Immunofluorescent analysis of (-20°C Ethanol) fixed NIH/3T3 cells using Bcl2 antibody (66799-1-Ig, Clone: 1B5B9) at dilution of 1:100 and CoraLite®488-Conjugated AffiniPure Goat Anti-Mouse IgG(H+L).



1X10⁶ NIH/3T3 cells were intracellularly stained with 0.5 ug Anti-Mouse Bcl2 (66799-1-Ig, Clone:1B5B9) and CoraLite®488-Conjugated AffiniPure Goat Anti-Mouse IgG(H+L) at dilution 1:1000 (red), or 0.5 ug Control Antibody. Cells were fixed with 4% PFA and permeabilized with Flow Cytometry Perm Buffer (PF00011-C).