

## Allgemeine Informationen

<b>Katalog-Nr.:</b> 66801-1-Ig	<b>GenBank-Zugangsnummer:</b> BC037960	<b>Reinigungsmethode:</b> Protein-A-Reinigung
<b>Größe:</b> 150ul , Konzentration: 1600 µg/ml von1235 Nanodrop und 1000 µg/ml durch die Bradford-Methode mit BSA als Standard;	<b>GeneID (NCBI):</b> 1235	<b>CloneNo.:</b> 1C11A9
<b>Wirt:</b> Maus	<b>Vollständiger Name:</b> chemokine (C-C motif) receptor 6	<b>Empfohlene Verdünnungen:</b> IHC 1:250-1:1000 IF 1:400-1:1600
<b>Isotyp:</b> IgG2a	<b>Berechnete Masse:</b> 42 kDa	
<b>Immunogen Katalognummer:</b> AG24195		

## Anwendungen

<b>Geprüfte Anwendungen:</b> FC, IF, IHC, ELISA	<b>Positivkontrollen:</b> IHC : humanes Tonsillitisgewebe, IF : humanes Tonsillitisgewebe,
<b>Getestete Reaktivität:</b> Human	
<b>Hinweis-IHC: Antigenmaskierung mit TE-Puffer pH 9,0 empfohlen. (*) Wahlweise kann die Antigenmaskierung auch mit Citratpuffer pH 6,0 erfolgen.</b>	

## Hintergrundinformationen

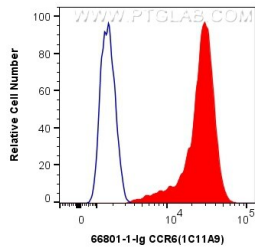
CCR6, also known CD196, is a C-C chemokine receptor that belongs to family A of G protein-coupled receptor superfamily. It is expressed on most B cells, memory T cells, and some subsets of dendritic cells (PMID: 17057190). CCR6 is a receptor for the C-C type chemokine CCL20 (PMID: 9169459). The ligand-receptor pair CCL20-CCR6 is responsible for the chemoattraction of immature dendritic cells, effector/memory T-cells and B-cells and plays a role at skin and mucosal surfaces under homeostatic and inflammatory conditions, as well as in pathology, including cancer and rheumatoid arthritis (PMID: 12948524). CCR6 polymorphism has been associated with rheumatoid arthritis susceptibility and CCR6 is involved in IL-17-driven autoimmunity in human diseases (PMID: 20453841).

## Lagerung

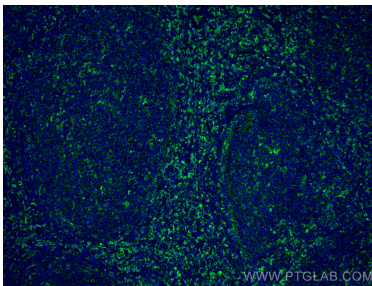
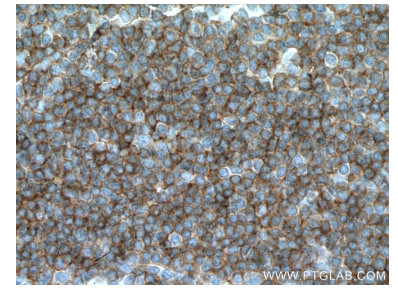
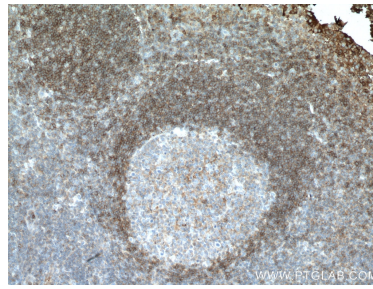
**Lagerungsbedingungen:**  
Bei -20°C lagern. Nach dem Versand ein Jahr lang stabil  
**Lagerungspuffer:**  
PBS mit 0.02% Natriumazid und 50% Glycerin pH 7.3.  
Aliquotieren ist nicht notwendig bei -20°C Lagerung

\*\*\* 20ul-Größen enthalten 0.1% BSA

## Ausgewählte Validierungsdaten



$1 \times 10^6$  Jurkat cells were intracellularly stained with 0.4  $\mu$ g Anti-Human CCR6 (66801-1-Ig, Clone:1C11A9) and CoraLite®488-Conjugated AffiniPure Goat Anti-Mouse IgG(H+L) at dilution 1:1000 (red), or 0.4  $\mu$ g Mouse IgG2a Isotype Control (66360-2-Ig, Clone: K11A1B2A2) (blue). Cells were fixed with 4% PFA and permeabilized with Flow Cytometry Perm Buffer (PF00011-C).



Immunofluorescent analysis of (4% PFA) fixed human tonsillitis tissue using CCR6 antibody (66801-1-Ig, Clone: 1C11A9) at dilution of 1:800 and CoraLite®488-Conjugated AffiniPure Goat Anti-Mouse IgG(H+L).