

Nur für Forschungszwecke

# AQP1 Monoklonaler Antikörper

Katalog-Nr.:66805-1-Ig



## Allgemeine Informationen

<b>Katalog-Nr.:</b> 66805-1-Ig	<b>GenBank-Zugangsnummer:</b> BC022486	<b>Reinigungsmethode:</b> Protein-G-Reinigung
<b>Größe:</b> 150ul , Konzentration: 1400 µg/ml von358 Nanodrop und 1000 µg/ml durch die Bradford-Methode mit BSA als Standard;	<b>GeneID (NCBI):</b> aquaporin 1 (Colton blood group)	<b>CloneNo.:</b> 2E5D6
<b>Wirt:</b> Maus	<b>Vollständiger Name:</b> aquaporin 1 (Colton blood group)	<b>Empfohlene Verdünnungen:</b> WB 1:5000-1:20000 IHC 1:200-1:800 IF 1:200-1:800
<b>Isotyp:</b> IgG1	<b>Berechnete Masse:</b> 269 aa, 29 kDa	
<b>Immunogen Katalognummer:</b> AG14093	<b>Beobachtete Masse:</b> 28 kDa, 38-40 kDa	

## Anwendungen

<b>Geprüfte Anwendungen:</b> IF, IHC, WB, ELISA	<b>Positivkontrollen:</b>
<b>Getestete Reaktivität:</b> Hausschwein, Human	<b>WB :</b> humanes Herzgewebe, Hausschwein-Nierengewebe, humanes Skelettmuskelgewebe
<b>Hinweis-IHC: Antigenmaskierung mit TE-Puffer pH 9,0 empfohlen. (*) Wahlweise kann die Antigenmaskierung auch mit Citratpuffer pH 6,0 erfolgen.</b>	<b>IHC :</b> humanes Nierengewebe,
	<b>IF :</b> humanes Nierengewebe,

## Hintergrundinformationen

AQP1 is a member of aquaporins (AQPs) that are small membrane-spanning proteins facilitating water transport. AQP1 is expressed in most tissues in the mammalian body. Alterations of AQP1 expression have been linked to variety of diseases, including cancer. The predicted molecular weight of AQP1 is around 28 kDa, while highly glycosylated form can also be observed around 40-45 kDa. (1530176)

## Lagerung

**Lagerungsbedingungen:**  
Bei -20°C lagern. Nach dem Versand ein Jahr lang stabil  
**Lagerungspuffer:**  
PBS mit 0.02% Natriumazid und 50% Glycerin pH 7.3.  
**Aliquotieren ist nicht notwendig bei -20°C Lagerung**

\*\*\* 20ul-Größen enthalten 0.1% BSA

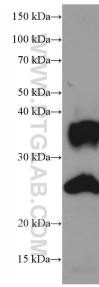
For technical support and original validation data for this product please contact:

T: 1 (888) 4PTGLAB (1-888-478-4522) (toll free in USA), or 1(312) 455-8498 (outside USA)

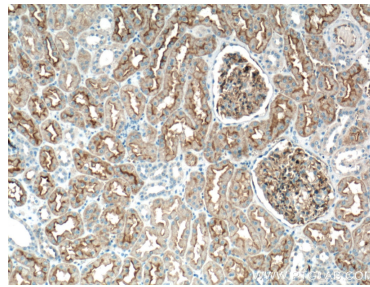
E: proteintech@ptglab.com  
W: ptglab.com

This product is exclusively available under Proteintech Group brand and is not available to purchase from any other manufacturer.

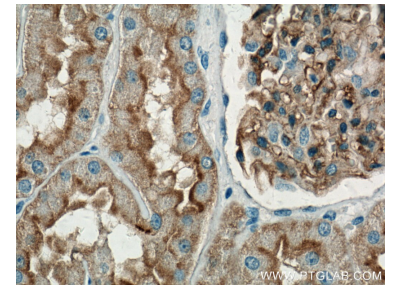
## Ausgewählte Validierungsdaten



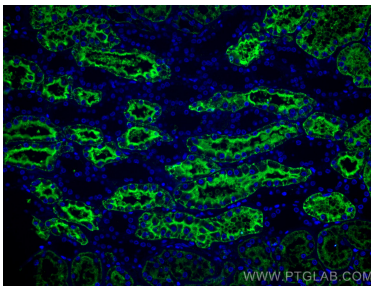
human heart tissue were subjected to SDS PAGE followed by western blot with 66805-1-Ig (AQP1 antibody) at dilution of 1:10000 incubated at room temperature for 1.5 hours.



Immunohistochemical analysis of paraffin-embedded human kidney tissue slide using 66805-1-Ig (AQP1 antibody) at dilution of 1:400 (under 10x lens. Heat mediated antigen retrieval with Tris-EDTA buffer (pH 9.0).



Immunohistochemical analysis of paraffin-embedded human kidney tissue slide using 66805-1-Ig (AQP1 antibody) at dilution of 1:400 (under 40x lens. Heat mediated antigen retrieval with Tris-EDTA buffer (pH 9.0).



Immunofluorescent analysis of (4% PFA) fixed human kidney tissue using AQP1 antibody (66805-1-Ig, Clone: 2E5D6) at dilution of 1:400 and CoraLite®488-Conjugated AffiniPure Goat Anti-Mouse IgG(H+L).