

Allgemeine Informationen

Katalog-Nr.: 66806-1-Ig	GenBank-Zugangsnummer: BC000432	Reinigungsmethode: Protein-G-Reinigung
Größe: 150ul , Konzentration: 1800 µg/ml von1917 Nanodrop und 1000 µg/ml durch die Bradford-Methode mit BSA als Standard;	GeneID (NCBI): 1917	CloneNo.: 4F3F4
Wirt: Maus	Vollständiger Name: eukaryotic translation elongation factor 1 alpha 2	Empfohlene Verdünnungen: WB 1:1000-1:6000
Isotyp: IgG1	Berechnete Masse: 50 kDa	
Immunogen Katalognummer: AG6875	Beobachtete Masse: 48-50 kDa	

Anwendungen

Geprüfte Anwendungen: WB, ELISA	Positivkontrollen: WB : HeLa-Zellen, 4T1-Zellen, Hausschwein- Hirngewebe, HEK-293-Zellen, Jurkat-Zellen, Maushirngewebe, MCF-7-Zellen, NIH/3T3-Zellen, Rattenhirngewebe
Getestete Reaktivität: Hausschwein, Human, Maus, Ratte	

Hintergrundinformationen

eEF1A2 is one of two isoforms (eEF1A1 and eEF1A2) of eukaryotic elongation factor 1 alpha (eEF1A or eEF1 α). The two isoforms share more than 90% sequence identity and have the similar function that being a protein translation factor involved in protein synthesis. Addition, eEF1A2 plays an important role in cell cycle regulation, heat-shock response, aging, posttranslational modifications, and signal transduction (PMID: 25905039). eEF1A2 is expressed in heart, brain tissue, diaphragm and skeletal muscle while eEF1A1 is expressed ubiquitously (PMID:14588074). And the eEF1A2 protein stimulates the phospholipid signaling and activates the Akt-dependent cell migration and actin remodeling that ultimately favors tumorigenesis. It is reported that eEF1A2 was related with kinds of cancers such as ovarian cancer, prostate cancer, pancreatic cancer, breast cancer and lung cancer (PMID:14588074; 24853801; 25744894; 25905039). An 48 kDa band has also been reported(PMID: 24285179).

Lagerung

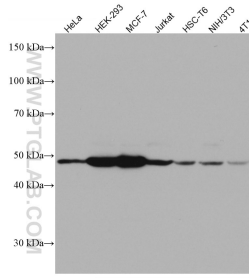
Lagerungsbedingungen:
Bei -20°C lagern. Nach dem Versand ein Jahr lang stabil

Lagerungspuffer:
PBS mit 0.02% Natriumazid und 50% Glycerin pH 7.3.

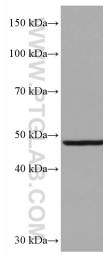
Aliquotieren ist nicht notwendig bei -20°C Lagerung

*** 20ul-Größen enthalten 0.1% BSA

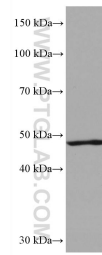
Ausgewählte Validierungsdaten



Various lysates were subjected to SDS PAGE followed by western blot with 66806-1-Ig (EEF1A2 antibody) at dilution of 1:3000 incubated at room temperature for 1.5 hours.



mouse brain tissue were subjected to SDS PAGE followed by western blot with 66806-1-Ig (EEF1A2 antibody) at dilution of 1:20000 incubated at room temperature for 1.5 hours.



rat brain tissue were subjected to SDS PAGE followed by western blot with 66806-1-Ig (EEF1A2 antibody) at dilution of 1:20000 incubated at room temperature for 1.5 hours.