

Nur für Forschungszwecke

# PABPC1, PABP Monoklonaler Antikörper



Katalog-Nr.: 66809-1-Ig

Vorgestelltes Produkt

2 Publikationen

## Allgemeine Informationen

<b>Katalog-Nr.:</b> 66809-1-Ig	<b>GenBank-Zugangsnummer:</b> BC015958	<b>Reinigungsmethode:</b> Protein-G-Reinigung
<b>Größe:</b> 150ul, Konzentration: 2400 µg/ml von 26986 Nanodrop und 1000 µg/ml durch die Bradford-Methode mit BSA als Standard;	<b>GeneID (NCBI):</b> 26986	<b>CloneNo.:</b> 3D8B5
<b>Wirt:</b> Maus	<b>Vollständiger Name:</b> poly(A) binding protein, cytoplasmic 1	<b>Empfohlene Verdünnungen:</b> WB 1:2000-1:10000 IHC 1:50-1:500 IF 1:50-1:500
<b>Isotyp:</b> IgG1	<b>Berechnete Masse:</b> 71 kDa	
<b>Immunogen Katalognummer:</b> AG27860	<b>Beobachtete Masse:</b> 71 kDa	

## Anwendungen

<b>Geprüfte Anwendungen:</b> IF, IHC, WB, ELISA	<b>Positivkontrollen:</b> WB: HeLa-Zellen, LNCaP-Zellen, MCF-7-Zellen, NCCIT-Zellen, T-47D-Zellen IHC: Mausohr-Gewebe, Maus-Cerebellum-Gewebe IF: HEK-293-Zellen,
<b>In Publikationen genannte Anwendungen:</b> IHC	
<b>Getestete Reaktivität:</b> Human, Maus, Ratte	
<b>Zitierte Arten:</b> Human	
<b>Hinweis-IHC: Antigenmaskierung mit TE-Puffer pH 9,0 empfohlen. (*) Wahlweise kann die Antigenmaskierung auch mit Citratpuffer pH 6,0 erfolgen.</b>	

## Hintergrundinformationen

The poly(A)-binding protein (PABP), which is found complexed to the 3-prime poly(A) tail of eukaryotic mRNA, is required for poly(A) shortening and translation initiation [PMID: 21989405]. Polyadenylate-binding protein 1 (PABPC1) is a cytoplasmic-nuclear shuttling protein important for protein translation initiation, and both RNA processing and stability. In the cytoplasm, PABPC1 binds to the 3' poly(A) tail of eukaryotic mRNAs through its RNA-recognition motifs (RRM) and interacts with the N-terminus of eIF4G, part of the eIF4F complex associated with the 5' cap structure [PMID:20009508, 17381337].

## Bemerkenswerte Veröffentlichungen

Verfasser	Pubmed ID	Journal	Anwendung
Abdoulaye Issotina Zibrila	34232157	J Hypertens	IHC
Tailai An	34420428	Future Oncol	IHC

## Lagerung

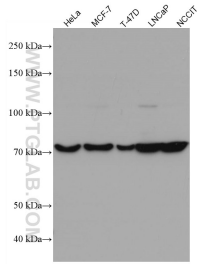
**Lagerungsbedingungen:**  
Bei -20°C lagern. Nach dem Versand ein Jahr lang stabil  
**Lagerungspuffer:**  
PBS mit 0.02% Natriumazid und 50% Glycerin pH 7.3.  
Aliquotieren ist nicht notwendig bei -20°C Lagerung

\*\*\* 20ul-Größen enthalten 0.1% BSA

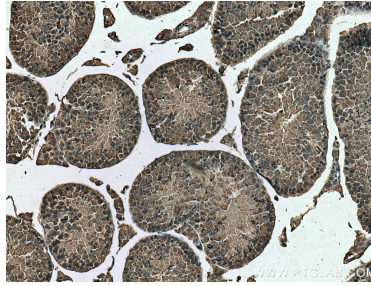
For technical support and original validation data for this product please contact:  
T: 1 (888) 4PTGLAB (1-888-478-4522) (toll free in USA), or 1(312) 455-8498 (outside USA)  
E: proteintech@ptglab.com  
W: ptglab.com

This product is exclusively available under Proteintech Group brand and is not available to purchase from any other manufacturer.

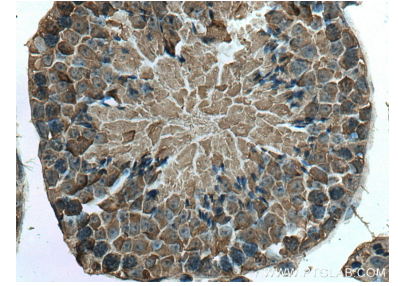
## Ausgewählte Validierungsdaten



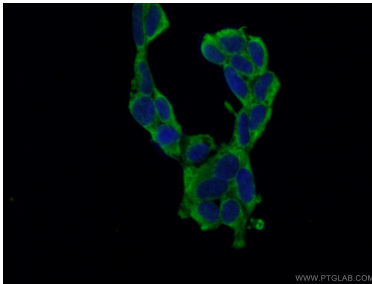
Various lysates were subjected to SDS PAGE followed by western blot with 66809-1-Ig (PABPC1,PABP antibody) at dilution of 1:5000 incubated at room temperature for 1.5 hours.



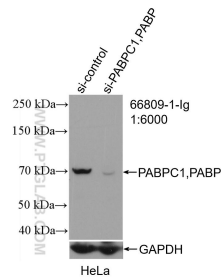
Immunohistochemical analysis of paraffin-embedded mouse testis tissue slide using 66809-1-Ig (PABPC1,PABP antibody) at dilution of 1:200 (under 10x lens). Heat mediated antigen retrieval with Tris-EDTA buffer (pH 9.0).



Immunohistochemical analysis of paraffin-embedded mouse testis tissue slide using 66809-1-Ig (PABPC1,PABP antibody) at dilution of 1:200 (under 40x lens). Heat mediated antigen retrieval with Tris-EDTA buffer (pH 9.0).



Immunofluorescent analysis of (-20°C Ethanol) fixed HEK-293 cells using 66809-1-Ig (PABPC1,PABP antibody) at dilution of 1:100 and Alexa Fluor 488-Conjugated AffiniPure Goat Anti-Mouse IgG(H+L).



WB result of PABPC1,PABP antibody (66809-1-Ig; 1:6000; incubated at room temperature for 1.5 hours) with sh-Control and sh-PABPC1,PABP transfected HeLa cells.