

## Allgemeine Informationen

<b>Katalog-Nr.:</b> 66818-1-Ig	<b>GenBank-Zugangsnummer:</b> BC131517	<b>Reinigungsmethode:</b> Protein-A-Reinigung
<b>Größe:</b> 150ul , Konzentration: 1300 µg/ml von2103 Nanodrop und 1000 µg/ml durch die Bradford-Methode mit BSA als Standard;	<b>GeneID (NCBI):</b> estrogen-related receptor beta	<b>CloneNo.:</b> 3E10C1
<b>Wirt:</b> Maus	<b>Berechnete Masse:</b> 508 aa, 56 kDa	<b>Empfohlene Verdünnungen:</b> WB 1:1000-1:4000 IHC 1:1000-1:4000 IF 1:200-1:800
<b>Isotyp:</b> IgG1	<b>Beobachtete Masse:</b> 47 kDa	
<b>Immunogen Katalognummer:</b> AG18626		

## Anwendungen

<b>Geprüfte Anwendungen:</b> IF, IHC, WB, ELISA	<b>Positivkontrollen:</b> <b>WB</b> : HEK-293-Zellen, A549-Zellen, Caco-2-Zellen, HeLa-Zellen, HT-29-Zellen, JAR-Zellen, LNCaP-Zellen, Maushirngewebe, NCCIT-Zellen, Rattenhirngewebe
<b>In Publikationen genannte Anwendungen:</b> IF	<b>IHC</b> : humanes Prostatakarzinomgewebe, <b>IF</b> : Caco-2-Zellen,
<b>Getestete Reaktivität:</b> Human, Maus, Ratte	
<b>Zitierte Arten:</b> Human	
<b>Hinweis-IHC: Antigenmaskierung mit TE-Puffer pH 9,0 empfohlen. (*) Wahlweise kann die Antigenmaskierung auch mit Citratpuffer pH 6,0 erfolgen.</b>	

## Hintergrundinformationen

Estrogen related receptor beta (ESRRB), a NR3 Steroid Receptor, has been shown to affect early placental development. Also it can act as a repressor of transcriptional activity mediated by the glucocorticoid receptor (GR). It binds as a monomer to the extended half-site TNAAGTGCA and as a homodimer to the estrogen response element (ERE), palindromic thyroid hormone response element (TRE(pal)), and SF-1 response element, but not to the glucocorticoid response element (GRE). Estrogen related receptor beta mutations lead to abnormal development of the chorion and defective diploid trophoblast proliferation, and are lethal during midgestation. Expression has been documented in mice in the extra embryonic ectoderm that gives rise to the chorion. ESTs have been isolated from normal human eye, lung, and testis libraries. The ligand for the receptor is PPARgamma coactivator 1 (PGC-1) beta. ESRRB exists various isoforms and molecular weight of each isoform is 48 kDa,55 kDa and 56 kDa.

## Bemerkenswerte Veröffentlichungen

Verfasser	Pubmed ID	Journal	Anwendung
Bo Wang	34749018	Stem Cell Res	IF

## Lagerung

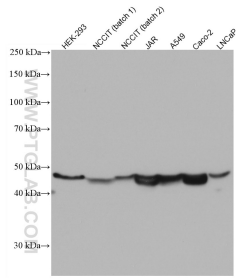
**Lagerungsbedingungen:**  
Bei -20°C lagern. Nach dem Versand ein Jahr lang stabil  
**Lagerungspuffer:**  
PBS mit 0.02% Natriumazid und 50% Glycerin pH 7.3.  
Aliquotieren ist nicht notwendig bei -20°C Lagerung

**\*\*\* 20ul-Größen enthalten 0.1% BSA**

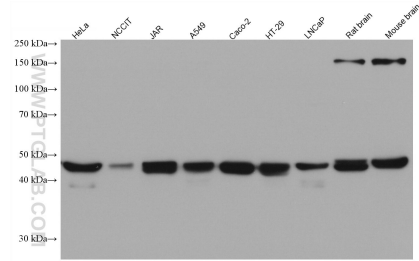
For technical support and original validation data for this product please contact:  
T: 1 (888) 4PTGLAB (1-888-478-4522) (toll free in USA), or 1(312) 455-8498 (outside USA)  
E: [proteintech@ptglab.com](mailto:proteintech@ptglab.com)  
W: [ptglab.com](http://ptglab.com)

**This product is exclusively available under Proteintech Group brand and is not available to purchase from any other manufacturer.**

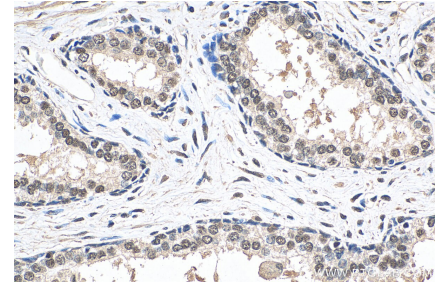
## Ausgewählte Validierungsdaten



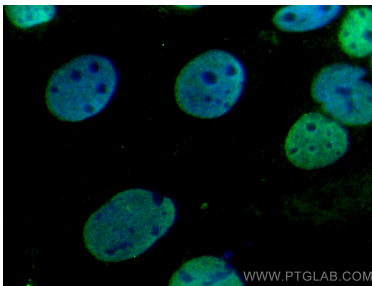
Various lysates were subjected to SDS PAGE followed by western blot with 66818-1-Ig (ESRRB antibody) at dilution of 1:2000 incubated at room temperature for 1.5 hours.



Various lysates were subjected to SDS PAGE followed by western blot with 66818-1-Ig (ESRRB antibody) at dilution of 1:40000 incubated at room temperature for 1.5 hours.



Immunohistochemical analysis of paraffin-embedded human prostate cancer tissue slide using 66818-1-Ig (ESRRB antibody) at dilution of 1:2000 (under 10x lens). Heat mediated antigen retrieval with Tris-EDTA buffer (pH 9.0).



Immunofluorescent analysis of (4% PFA) fixed Caco-2 cells using ESRRB antibody (66818-1-Ig, Clone: 3E10C1) at dilution of 1:400 and CoraLite®488-Conjugated AffiniPure Goat Anti-Mouse IgG(H+L).