

Nur für Forschungszwecke

Collagen Type VI Monoklonaler Antikörper



Katalog-Nr.:66824-1-Ig

Allgemeine Informationen

Katalog-Nr.: 66824-1-Ig	GenBank-Zugangsnummer: BC052575	Reinigungsmethode: Protein-A-Reinigung
Größe: 150ul , Konzentration: 1400 µg/ml von1291 Nanodrop und 1000 µg/ml durch die Bradford-Methode mit BSA als Standard;	GeneID (NCBI): collagen, type VI, alpha 1	CloneNo.: 3H10B1
Wirt: Maus	Berechnete Masse: 1028 aa, 109 kDa	Empfohlene Verdünnungen: WB 1:1000-1:6000 IHC 1:1000-1:4000 IF 1:200-1:800
Isotyp: IgG2a	Beobachtete Masse: 140-150 kDa	
Immunogen Katalognummer: AG11809		

Anwendungen

Geprüfte Anwendungen: IF, IHC, WB, ELISA	Positivkontrollen:
Getestete Reaktivität: Human	WB : humanes Skelettmuskelgewebe, humanes Herzgewebe
Hinweis-IHC: Antigendemaskierung mit TE-Puffer pH 9,0 empfohlen. (*) Wahlweise kann die Antigendemaskierung auch mit Citratpuffer pH 6,0 erfolgen.	IHC : humanes Leberkarzinomgewebe, humanes Kolonkarzinomgewebe
	IF : humanes Leberkarzinomgewebe,

Hintergrundinformationen

Type VI Collagen is a major structural component of microfibrils. Type VI Collagen was found to be present throughout the connective tissue and in the extracellular matrix of cultured fibroblasts (PMID: 6723253). It is a heterotrimer composed of three different chains: alpha-1(VI), alpha-2(VI), and alpha-3(VI) or alpha-5(VI) or alpha-6(VI). The alpha-1(VI) chain is encoded by COL6A1 gene. Mutations in this gene result in Bethlem myopathy and Ullrich congenital muscular dystrophy.

Lagerung

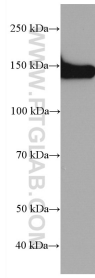
Lagerungsbedingungen:
Bei -20°C lagern. Nach dem Versand ein Jahr lang stabil
Lagerungspuffer:
PBS mit 0.02% Natriumazid und 50% Glycerin pH 7.3.
Aliquotieren ist nicht notwendig bei -20°C Lagerung

*** 20ul-Größen enthalten 0.1% BSA

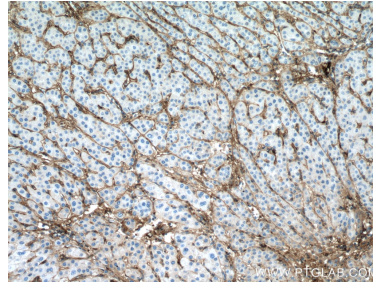
For technical support and original validation data for this product please contact:
T: 1 (888) 4PTGLAB (1-888-478-4522) (toll free in USA), or 1(312) 455-8498 (outside USA)
E: proteintech@ptglab.com
W: ptglab.com

This product is exclusively available under Proteintech Group brand and is not available to purchase from any other manufacturer.

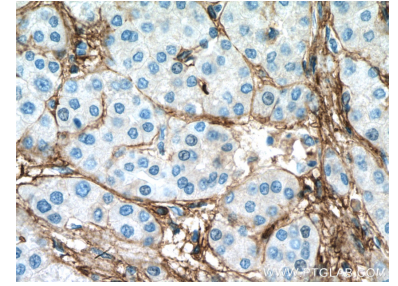
Ausgewählte Validierungsdaten



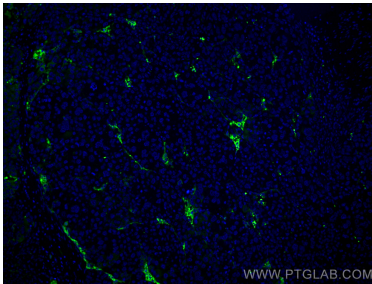
human skeletal muscle tissue were subjected to SDS PAGE followed by western blot with 66824-1-Ig (Collagen Type VI antibody) at dilution of 1:3000 incubated at room temperature for 1.5 hours.



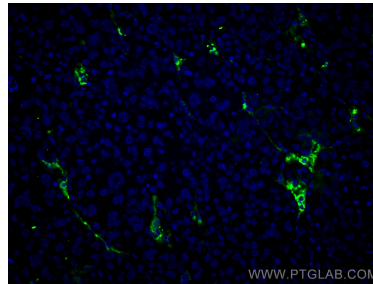
Immunohistochemical analysis of paraffin-embedded human liver cancer tissue slide using 66824-1-Ig (Collagen Type VI antibody) at dilution of 1:2000 (under 10x lens. Heat mediated antigen retrieval with Tris-EDTA buffer (pH 9.0).



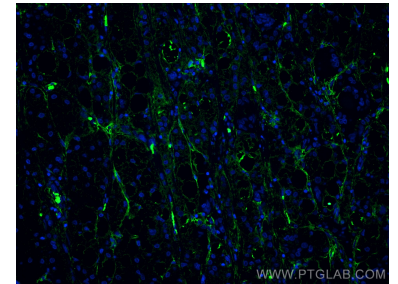
Immunohistochemical analysis of paraffin-embedded human liver cancer tissue slide using 66824-1-Ig (Collagen Type VI antibody) at dilution of 1:2000 (under 40x lens. Heat mediated antigen retrieval with Tris-EDTA buffer (pH 9.0).



Immunofluorescent analysis of (4% PFA) fixed human liver cancer tissue using Collagen Type VI antibody (66824-1-Ig, Clone: 3H10B1) at dilution of 1:400 and CoraLite®488-Conjugated AffiniPure Goat Anti-Mouse IgG(H+L).



Immunofluorescent analysis of (4% PFA) fixed human liver cancer tissue using Collagen Type VI antibody (66824-1-Ig, Clone: 3H10B1) at dilution of 1:400 and CoraLite®488-Conjugated AffiniPure Goat Anti-Mouse IgG(H+L).



Immunofluorescent analysis of (4% PFA) fixed human liver cancer tissue using Collagen Type VI antibody (66824-1-Ig, Clone: 3H10B1) at dilution of 1:400 and CoraLite®488-Conjugated AffiniPure Goat Anti-Mouse IgG(H+L).