

Nur für Forschungszwecke

# IL-12RB1 Monoklonaler Antikörper

Katalog-Nr.:66829-1-Ig



## Allgemeine Informationen

|  |   |   |
|--|---|---|
| <b>Katalog-Nr.:</b><br>66829-1-Ig  | <b>GenBank-Zugangsnummer:</b><br>BC029121                     | <b>Reinigungsmethode:</b><br>Protein-G-Reinigung    |
| <b>Größe:</b><br>150ul , Konzentration: 700 µg/ml von<br>Nanodrop und 500 µg/ml durch die<br>Bradford-Methode mit BSA als<br>Standard; | <b>GeneID (NCBI):</b><br>3594                                 | <b>CloneNo.:</b><br>1E10E10                         |
| <b>Wirt:</b><br>Maus   | <b>Vollständiger Name:</b><br>interleukin 12 receptor, beta 1 | <b>Empfohlene Verdünnungen:</b><br>WB 1:1000-1:8000 |
| <b>Isotyp:</b><br>IgG1   | <b>Berechnete Masse:</b><br>662 aa, 73 kDa                    |   |
| <b>Immunogen Katalognummer:</b><br>AG6920  | <b>Beobachtete Masse:</b><br>100-110 kDa                      |   |

## Anwendungen

|   |   |
|---|---|
| <b>Geprüfte Anwendungen:</b><br>FC, WB, ELISA | <b>Positivkontrollen:</b><br>WB : Ramos-Zellen, Daudi-Zellen, Jurkat-Zellen, K-562-Zellen, Raji-Zellen, TF-1-Zellen, THP-1-Zellen |
| <b>Getestete Reaktivität:</b><br>Human        |   |

## Hintergrundinformationen

IL12RB1, also named as Interleukin-12 receptor subunit beta-1 or CD212, is a 662 amino acid protein, which contains 5 fibronectin type-III domains and belongs to the type I cytokine receptor family. Type 2 subfamily. IL12RB1 localizes in the membrane and functions as an interleukin receptor which binds interleukin-12 with low affinity and is involved in IL12 transduction. Associated with IL12RB2 it forms a functional, high affinity receptor for IL12. Associates also with IL23R to form the interleukin-23 receptor which functions in IL23 signal transduction probably through activation of the Jak-Stat signaling cascade.

## Lagerung

**Lagerungsbedingungen:**  
Bei -20°C lagern. Nach dem Versand ein Jahr lang stabil  
**Lagerungspuffer:**  
PBS mit 0.02% Natriumazid und 50% Glycerin pH 7.3.  
**Aliquotieren ist nicht notwendig bei -20°C Lagerung**

**\*\*\* 20ul-Größen enthalten 0.1% BSA**

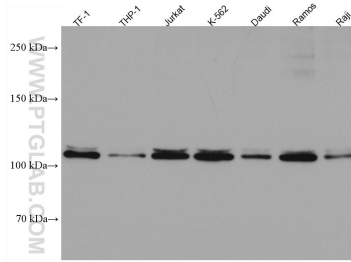
For technical support and original validation data for this product please contact:  
T: 1 (888) 4PTGLAB (1-888-478-4522) (toll free in USA), or 1(312) 455-8498 (outside USA)  
E: proteintech@ptglab.com  
W: ptglab.com

**This product is exclusively available under Proteintech Group brand and is not available to purchase from any other manufacturer.**

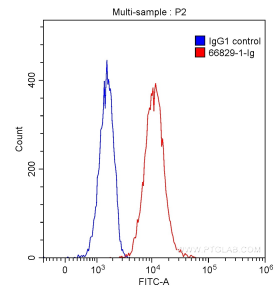
## Ausgewählte Validierungsdaten



Ramos cells were subjected to SDS PAGE followed by western blot with 66829-1-ig (IL12RB1 antibody) at dilution of 1:4000 incubated at room temperature for 1.5 hours.



Various lysates were subjected to SDS PAGE followed by western blot with 66829-1-ig (IL12RB1 antibody) at dilution of 1:10000 incubated at room temperature for 1.5 hours.



1X10<sup>6</sup> K-562 cells were stained with 0.20 ug/test Anti-Human IL12RB1 (66829-1-ig, Clone:1E10E10) (red) or 0.20 ug control antibody (blue) and CoraLite®488-Conjugated AffiniPure Goat Anti-Mouse IgG(H+L) with dilution 1:1000. Fixed with 90% MeOH.