

Allgemeine Informationen

Katalog-Nr.: 66830-1-Ig	GenBank-Zugangsnummer: BC003557	Reinigungsmethode: Protein-G-Reinigung
Größe: 150ul , Konzentration: 2000 µg/ml von 348 Nanodrop und 680 µg/ml durch die Bradford-Methode mit BSA als Standard;	GeneID (NCBI): apolipoprotein E	CloneNo.: 1B2C9
Wirt: Maus	Vollständiger Name: apolipoprotein E	Empfohlene Verdünnungen: WB 1:3000-1:20000 IHC 1:50-1:500 IF 1:50-1:500
Isotyp: IgG1	Berechnete Masse: 36 kDa	
Immunogen Katalognummer: AG28186	Beobachtete Masse: 34-36 kDa	

Anwendungen

Geprüfte Anwendungen: FC, IF, IHC, WB, ELISA	Positivkontrollen: WB : humanes Plasmagewebe, Caco-2-Zellen, T-47D-Zellen IHC : Maushirngewebe, IF : HepG2-Zellen,
In Publikationen genannte Anwendungen: IF, IHC, WB	
Getestete Reaktivität: Human, Maus	
Zitierte Arten: Human, Maus	
Hinweis-IHC: Antigendemaskierung mit TE-Puffer pH 9,0 empfohlen. (*) Wahlweise kann die Antigendemaskierung auch mit Citratpuffer pH 6,0 erfolgen.	

Hintergrundinformationen

The apolipoprotein E (APOE) is a 299-amino acid polypeptide that mediates the binding, internalization, and catabolism of lipoprotein particles, and also serve as a ligand for the LDL (APO B/E) receptor and for the specific APOE receptor (chylomicron remnant) of hepatic tissues. The very strong association of the APOE ε4 allele with AD risk and its role in the accumulation of amyloid β in brains of people and animal models solidify the biological relevance of APOE isoforms but do not provide mechanistic insight.

Bemerkenswerte Veröffentlichungen

Verfasser	Pubmed ID	Journal	Anwendung
Hideaki Morishita	31526472	Elife	WB,IF
Anllely Fernandez	36436561	J Biol Chem	IF
Anika Alberts	33363539	Front Immunol	WB

Lagerung

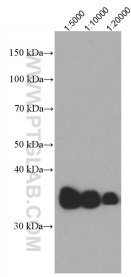
Lagerungsbedingungen:
Bei -20°C lagern. Nach dem Versand ein Jahr lang stabil
Lagerungspuffer:
PBS mit 0.02% Natriumazid und 50% Glycerin pH 7.3.
Aliquotieren ist nicht notwendig bei -20°C Lagerung

***** 20ul-Größen enthalten 0.1% BSA**

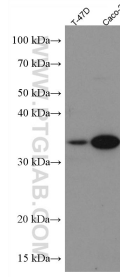
For technical support and original validation data for this product please contact:
T: 1 (888) 4PTGLAB (1-888-478-4522) (toll free in USA), or 1(312) 455-8498 (outside USA)
E: proteintech@ptglab.com
W: ptglab.com

This product is exclusively available under Proteintech Group brand and is not available to purchase from any other manufacturer.

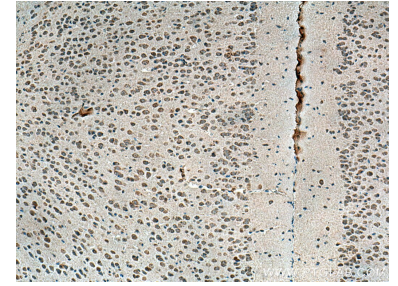
Ausgewählte Validierungsdaten



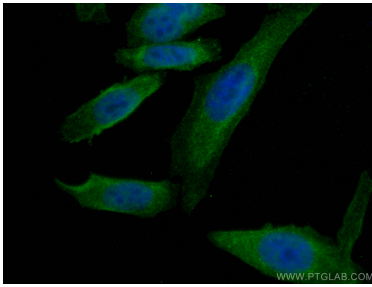
human plasma was subjected to SDS PAGE followed by western blot with 66830-1-Ig (APOE antibody) at a range of dilutions from 1:5000 to 1:20000 incubated at room temperature for 1.5 hours.



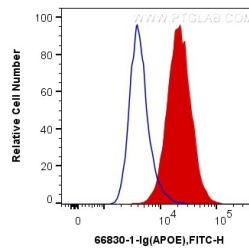
Various lysates were subjected to SDS PAGE followed by western blot with 66830-1-Ig (APOE antibody) at dilution of 1:3000 incubated at room temperature for 1.5 hours.



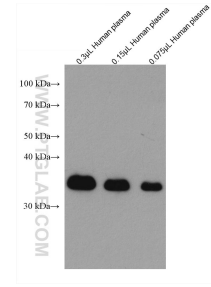
Immunohistochemical analysis of paraffin-embedded mouse brain tissue slide using 66830-1-Ig (APOE antibody) at dilution of 1:0 (under 10x lens). Heat mediated antigen retrieval with Tris-EDTA buffer (pH 9.0).



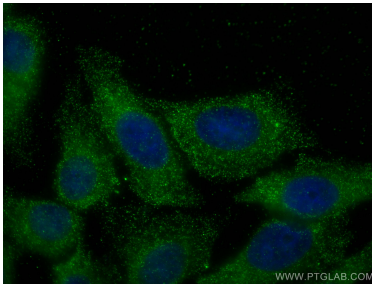
Immunofluorescent analysis of (4% PFA) fixed HepG2 cells using APOE antibody (66830-1-Ig, Clone: 1B2C9) at dilution of 1:100 and CoraLite®488-Conjugated AffiniPure Goat Anti-Mouse IgG(H+L).



1X10⁶ HepG2 cells were intracellularly stained with 0.2 ug Anti-Human APOE (66830-1-Ig, Clone:1B2C9) and CoraLite®488-Conjugated AffiniPure Goat Anti-Mouse IgG(H+L) at dilution 1:1000 (red), or 0.2 ug Control Antibody. Cells were fixed with 4% PFA and permeabilized with Flow Cytometry Perm Buffer (PF00011-C).



human plasma were subjected to SDS PAGE followed by western blot with 66830-1-Ig (APOE antibody) at dilution of 1:3400 incubated at room temperature for 1.5 hours.



Immunofluorescent analysis of (-20°C Ethanol) fixed HepG2 cells using APOE antibody (66830-1-Ig, Clone: 1B2C9) at dilution of 1:400 and CoraLite®488-Conjugated AffiniPure Goat Anti-Mouse IgG(H+L).