

Nur für Forschungszwecke

# ASGR2 Monoklonaler Antikörper

Katalog-Nr.:66831-1-Ig



## Allgemeine Informationen

<b>Katalog-Nr.:</b> 66831-1-Ig	<b>GenBank-Zugangsnummer:</b> BC017251	<b>Reinigungsmethode:</b> Protein-A-Reinigung
<b>Größe:</b> 150ul , Konzentration: 2900 µg/ml von433 Nanodrop und 1500 µg/ml durch die Bradford-Methode mit BSA als Standard;	<b>GeneID (NCBI):</b> 433	<b>CloneNo.:</b> 2A5C12
<b>Wirt:</b> Maus	<b>Vollständiger Name:</b> asialoglycoprotein receptor 2	<b>Empfohlene Verdünnungen:</b> WB 1:1000-1:3000
<b>Isotyp:</b> IgG2a	<b>Berechnete Masse:</b> 39 kDa	
<b>Immunogen Katalognummer:</b> AG2037	<b>Beobachtete Masse:</b> 36 kDa	

## Anwendungen

<b>Geprüfte Anwendungen:</b> WB,ELISA	<b>Positivkontrollen:</b> WB : SMMC-7721-Zellen,
<b>Getestete Reaktivität:</b> Human	

## Hintergrundinformationen

Asialoglycoprotein receptor (ASGPR), also known as the hepatic galactose/N-acetylglucosamine (GlcNAc) receptor or Ashwell receptor, is a C-type lectin expressed exclusively in hepatic parenchymal cells. ASGPR consists of two subunits, a major subunit (ASGR1, HL-1) and a minor subunit (ASGR2, HL-2), and specifically recognizes terminal  $\beta$ -linked galactose or GlcNAc on circulating glycoproteins or cells. This receptor plays a critical role in serum glycoprotein homeostasis by mediating the endocytosis and lysosomal degradation of glycoproteins that contain terminal galactose or GlcNAc residues. ASGPR may facilitate hepatic infection by multiple viruses including hepatitis B, and is also a target for liver-specific drug delivery.

## Lagerung

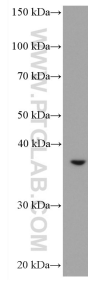
**Lagerungsbedingungen:**  
Bei -20°C lagern. Nach dem Versand ein Jahr lang stabil  
**Lagerungspuffer:**  
PBS mit 0.02% Natriumazid und 50% Glycerin pH 7.3.  
Aliquotieren ist nicht notwendig bei -20°C Lagerung

**\*\*\* 20ul-Größen enthalten 0.1% BSA**

For technical support and original validation data for this product please contact:  
T: 1 (888) 4PTGLAB (1-888-478-4522) (toll free in USA), or 1(312) 455-8498 (outside USA)  
E: proteintech@ptglab.com  
W: ptglab.com

This product is exclusively available under Proteintech Group brand and is not available to purchase from any other manufacturer.

## Ausgewählte Validierungsdaten



SMMC-7721 cells were subjected to SDS PAGE followed by western blot with 66831-1-Ig (ASGR2 antibody) at dilution of 1:2500 incubated at room temperature for 1.5 hours.