

Nur für Forschungszwecke

NRF1/nuclear respiratory factor 1 Monoklonaler Antikörper



Katalog-Nr.: 66832-1-Ig **3 Publikationen**

Allgemeine Informationen

Katalog-Nr.: 66832-1-Ig	GenBank-Zugangsnummer: BC016925	Reinigungsmethode: Protein-A-Reinigung
Größe: 150ul, Konzentration: 1700 µg/ml von 4899 Nanodrop und 1000 µg/ml durch die Bradford-Methode mit BSA als Standard;	GeneID (NCBI): nuclear respiratory factor 1	CloneNo.: 3C2B8
Wirt: Maus	Berechnete Masse: 522 aa, 56 kDa	Empfohlene Verdünnungen: WB 1:5000-1:50000 IHC 1:500-1:2000 IF 1:50-1:500
Isotyp: IgG2b	Beobachtete Masse: 70 kDa	
Immunogen Katalognummer: AG28149		

Anwendungen

Geprüfte Anwendungen: FC, IF, IHC, WB, ELISA	Positivkontrollen: WB: HeLa-Zellen, HEK-293-Zellen, Jurkat-Zellen, MCF-7-Zellen, NIH/3T3-Zellen IHC: humanes Kolonkarzinomgewebe, IF: HepG2-Zellen,
In Publikationen genannte Anwendungen: WB	
Getestete Reaktivität: Human, Maus, Ratte	
Zitierte Arten: Maus, Ratte	
Hinweis-IHC: Antigenmaskierung mit TE-Puffer pH 9,0 empfohlen. (*) Wahlweise kann die Antigenmaskierung auch mit Citratpuffer pH 6,0 erfolgen.	

Hintergrundinformationen

NRF1, also named as Alpha-pal and NRF-1, belongs to the NRF1/Ewg family. It is a transcription factor that activates the expression of the EIF2S1 (EIF2-alpha) gene. NRF1 is implicated in the control of nuclear genes required for respiration, heme biosynthesis, and mitochondrial DNA transcription and replication. It plays a critical role in regulating the expression of many antioxidant response element (ARE)-dependent genes. NRF1 exists various isoforms and long isoform is about 67 kDa and short isoform is about 45 kDa.

Bemerkenswerte Veröffentlichungen

Verfasser	Pubmed ID	Journal	Anwendung
Jingchi Sun	35324981	PLoS One	WB
Yue Wu	34221923	J Clin Transl Hepatol	WB
Shuying Huang	37182786	Nitric Oxide	WB

Lagerung

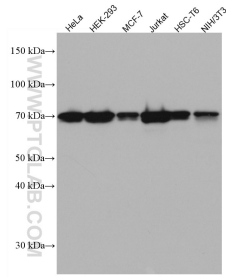
Lagerungsbedingungen:
Bei -20°C lagern. Nach dem Versand ein Jahr lang stabil
Lagerungspuffer:
PBS mit 0.02% Natriumazid und 50% Glycerin pH 7.3.
Aliquotieren ist nicht notwendig bei -20°C Lagerung

*** 20ul-Größen enthalten 0.1% BSA

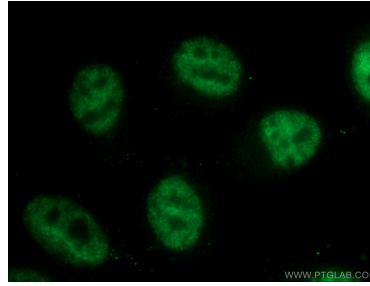
For technical support and original validation data for this product please contact:
T: 1 (888) 4PTGLAB (1-888-478-4522) (toll free in USA), or 1(312) 455-8498 (outside USA)
E: proteintech@ptglab.com
W: ptglab.com

This product is exclusively available under Proteintech Group brand and is not available to purchase from any other manufacturer.

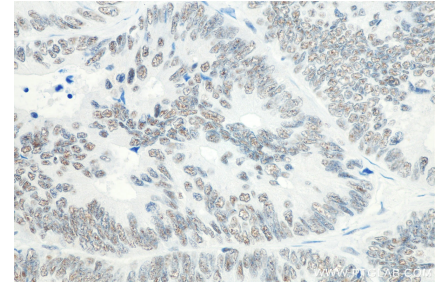
Ausgewählte Validierungsdaten



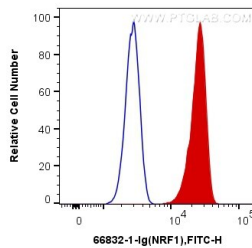
Various lysates were subjected to SDS PAGE followed by western blot with 66832-1-Ig (NRF1/nuclear respiratory factor 1) at dilution of 1:10000 incubated at room temperature for 1.5 hours.



Immunofluorescent analysis of (4% PFA) fixed HepG2 cells using 66832-1-Ig (NRF1/nuclear respiratory factor 1) at dilution of 1:50 and Alexa Fluor 488-Conjugated AffiniPure Goat Anti-Mouse IgG(H+L).



Immunohistochemical analysis of paraffin-embedded human colon cancer tissue slide using 66832-1-Ig (NRF1/nuclear respiratory factor 1 antibody) at dilution of 1:1000 (under 40x lens). Heat mediated antigen retrieval with Tris-EDTA buffer (pH 9.0).



1X10⁶ HepG2 cells were intracellularly stained with 0.2 ug Anti-Human NRF1/nuclear respiratory factor 1 (66832-1-Ig, Clone:3C2B8) and CoraLite®488-Conjugated AffiniPure Goat Anti-Mouse IgG(H+L) at dilution 1:1000 (red), or 0.2 ug Control Antibody. Cells were fixed and permeabilized with Transcription Factor Staining Buffer Kit (PF00011).