

Allgemeine Informationen

Katalog-Nr.: 66843-1-Ig	GenBank-Zugangsnummer: BC040457	Reinigungsmethode: Protein-G-Reinigung
Größe: 150ul , Konzentration: 1300 µg/ml von 815 Nanodrop und 1000 µg/ml durch die Bradford-Methode mit BSA als Standard;	GeneID (NCBI): 15000	CloneNo.: 1E3B3
Wirt: Maus	Vollständiger Name: calcium/calmodulin-dependent protein kinase II alpha	Empfohlene Verdünnungen: WB 1:5000-1:15000 IHC 1:500-1:2000 IF 1:200-1:800
Isotyp: IgG1	Berechnete Masse: 478 aa, 54 kDa	
Immunogen Katalognummer: AG4736	Beobachtete Masse: 45-60 kDa	

Anwendungen

Geprüfte Anwendungen: IF, IHC, WB, ELISA	Positivkontrollen:
In Publikationen genannte Anwendungen: WB	WB: Maushirngewebe, Hausschwein-Cerebellum- Gewebe, Hausschwein-Hirngewebe, Maus- Cerebellum-Gewebe, Ratten-Cerebellum-Gewebe, Rattenhirngewebe
Getestete Reaktivität: Hausschwein, Human, Maus, Ratte	IHC: Maushirngewebe, humanes Nierenzellkarzinomgewebe
Zitierte Arten: Ratte	IF: SH-SY5Y-Zellen,
Hinweis-IHC: Antigendemaskierung mit TE- Puffer pH 9,0 empfohlen. (*) Wahlweise kann die Antigendemaskierung auch mit Citratpuffer pH 6,0 erfolgen.	

Hintergrundinformationen

CaM-kinase II (CAMK2) is a prominent kinase in the central nervous system that may function in long-term potentiation and neurotransmitter release. It is a member of the NMDAR signaling complex in excitatory synapses it may regulate NMDAR-dependent potentiation of the AMPAR and synaptic plasticity. This antibody can recognize all the members of CAMK2 family.

Bemerkenswerte Veröffentlichungen

Verfasser	Pubmed ID	Journal	Anwendung
Ting-Ting Chen	33714957	Aging (Albany NY)	WB

Lagerung

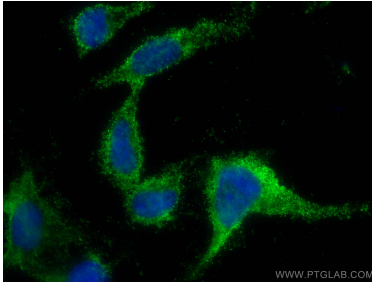
Lagerungsbedingungen:
Bei -20°C lagern. Nach dem Versand ein Jahr lang stabil
Lagerungspuffer:
PBS mit 0.02% Natriumazid und 50% Glycerin pH 7.3.
Aliquotieren ist nicht notwendig bei -20°C Lagerung

*** 20ul-Größen enthalten 0.1% BSA

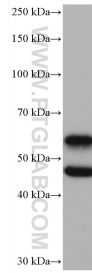
For technical support and original validation data for this product please contact:
T: 1 (888) 4PTGLAB (1-888-478-4522) (toll free in USA), or 1(312) 455-8498 (outside USA)
E: proteintech@ptglab.com
W: ptglab.com

This product is exclusively available under Proteintech Group brand and is not available to purchase from any other manufacturer.

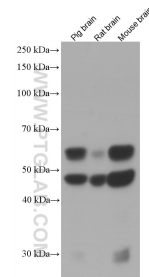
Ausgewählte Validierungsdaten



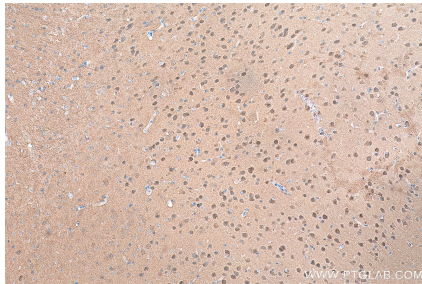
Immunofluorescent analysis of (4% PFA) fixed SH-SY5Y cells using CAMK2 antibody (66843-1-Ig, Clone: 1E3B3) at dilution of 1:400 and CoraLite®488-Conjugated AffiniPure Goat Anti-Mouse IgG(H+L).



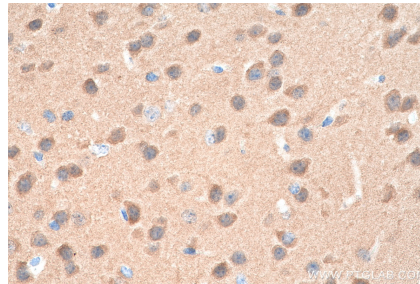
mouse brain tissue were subjected to SDS PAGE followed by western blot with 66843-1-Ig (CAMK2A antibody) at dilution of 1:10000 incubated at room temperature for 1.5 hours.



Various lysates were subjected to SDS PAGE followed by western blot with 66843-1-Ig (CAMK2A antibody) at dilution of 1:3000 incubated at room temperature for 1.5 hours.



Immunohistochemical analysis of paraffin-embedded mouse brain tissue slide using 66843-1-Ig (CAMK2 antibody) at dilution of 1:1000 (under 10x lens). Heat mediated antigen retrieval with Tris-EDTA buffer (pH 9.0).



Immunohistochemical analysis of paraffin-embedded mouse brain tissue slide using 66843-1-Ig (CAMK2 antibody) at dilution of 1:1000 (under 40x lens). Heat mediated antigen retrieval with Tris-EDTA buffer (pH 9.0).