

Nur für Forschungszwecke

# GLUT4 Monoklonaler Antikörper

Katalog-Nr.: 66846-1-Ig **57 Publikationen**



## Allgemeine Informationen

<b>Katalog-Nr.:</b> 66846-1-Ig	<b>GenBank-Zugangsnummer:</b> BC069615	<b>Reinigungsmethode:</b> Protein-A-Reinigung
<b>Größe:</b> 150ul, Konzentration: 2100 µg/ml von 6517 Nanodrop und 1000 µg/ml durch die Bradford-Methode mit BSA als Standard;	<b>GeneID (NCBI):</b> 3G7C9	<b>CloneNo.:</b> 3G7C9
<b>Wirt:</b> Maus	<b>Vollständiger Name:</b> solute carrier family 2 (facilitated glucose transporter), member 4	<b>Empfohlene Verdünnungen:</b> WB 1:1000-1:3000 IHC 1:50-1:500 IF 1:200-1:800
<b>Isotyp:</b> IgG2b	<b>Berechnete Masse:</b> 509 aa, 55 kDa	
<b>Immunogen Katalognummer:</b> AG15390	<b>Beobachtete Masse:</b> 48-50 kDa	

## Anwendungen

<b>Geprüfte Anwendungen:</b> FC, IF, IHC, WB, ELISA	<b>Positivkontrollen:</b> WB: Rattenherzgewebe, C2C12-Zellen, Hausschwein-Herzgewebe, humanes Herzgewebe, humanes Skelettmuskelgewebe, Maus-Fettgewebe, Mausherzgewebe, Maus-Skelettmuskelgewebe, Ratten-Skelettmuskelgewebe
<b>In Publikationen genannte Anwendungen:</b> IF, IHC, WB	<b>IHC:</b> Mausherzgewebe,
<b>Getestete Reaktivität:</b> Hausschwein, Human, Maus, Ratte	<b>IF:</b> Maus-Skelettmuskelgewebe,
<b>Zitierte Arten:</b> Hamster, Human, Maus, Ratte	
<b>Hinweis-IHC: Antigendemaskierung mit TE-Puffer pH 9,0 empfohlen. (*) Wahlweise kann die Antigendemaskierung auch mit Citratpuffer pH 6,0 erfolgen.</b>	

## Hintergrundinformationen

GLUT4 is a member of GLUT family of transmembrane hexose transporters. It is an INS receptor that mediates INS-stimulated glucose transport in fat and muscle where it is predominantly expressed. In response to INS stimulation, GLUT4 experienced translocation from trans-Golgi network to plasma membrane. The impairment of GLUT4 translocation is associated with diabetes.

## Bemerkenswerte Veröffentlichungen

Verfasser	Pubmed ID	Journal	Anwendung
Kosmas Kosmas	36142826	Int J Mol Sci	WB
Miao Chen	32880392	Clin Sci (Lond)	WB
Jie Yao	36048765	Autophagy	WB

## Lagerung

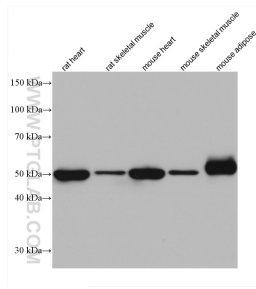
**Lagerungsbedingungen:**  
Bei -20°C lagern. Nach dem Versand ein Jahr lang stabil  
**Lagerungspuffer:**  
PBS mit 0.02% Natriumazid und 50% Glycerin pH 7.3.  
Aliquotieren ist nicht notwendig bei -20°C Lagerung

\*\*\* 20ul-Größen enthalten 0.1% BSA

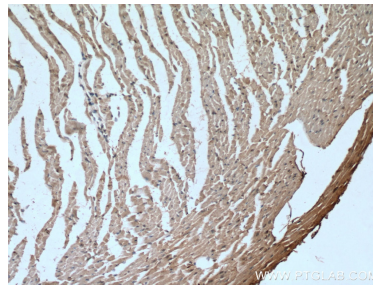
For technical support and original validation data for this product please contact:  
T: 1 (888) 4PTGLAB (1-888-478-4522) (toll free in USA), or 1(312) 455-8498 (outside USA)  
E: proteintech@ptglab.com  
W: ptglab.com

This product is exclusively available under Proteintech Group brand and is not available to purchase from any other manufacturer.

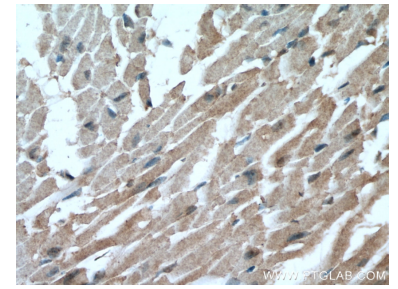
## Ausgewählte Validierungsdaten



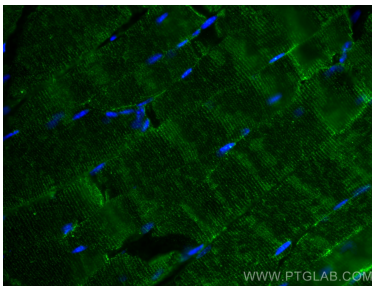
Various lysates were subjected to SDS PAGE followed by western blot with 66846-1-Ig (GLUT4 antibody) at dilution of 1:3000 incubated at room temperature for 1.5 hours.



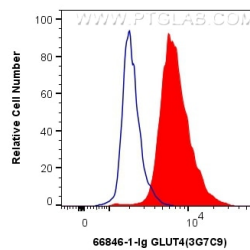
Immunohistochemical analysis of paraffin-embedded mouse heart tissue slide using 66846-1-Ig (GLUT4 antibody) at dilution of 1:200 (under 10x lens). Heat mediated antigen retrieval with Tris-EDTA buffer (pH 9.0).



Immunohistochemical analysis of paraffin-embedded mouse heart tissue slide using 66846-1-Ig (GLUT4 antibody) at dilution of 1:200 (under 40x lens). Heat mediated antigen retrieval with Tris-EDTA buffer (pH 9.0).



Immunofluorescent analysis of (4% PFA) fixed mouse skeletal muscle tissue using GLUT4 antibody (66846-1-Ig, Clone: 3G7C9) at dilution of 1:400 and CoraLite®488-Conjugated AffiniPure Goat Anti-Mouse IgG(H+L).



1X10<sup>6</sup> HEK-293 cells were intracellularly stained with 0.4 ug Anti-Human GLUT4 (66846-1-Ig, Clone:3G7C9) and CoraLite®488-Conjugated AffiniPure Goat Anti-Mouse IgG(H+L) at dilution 1:1000 (red), or 0.4 ug Mouse IgG2b Isotype Control (66360-3-Ig, Clone: K11B8C4B5) (blue). Cells were fixed with 4% PFA and permeabilized with Flow Cytometry Perm Buffer (PF00011-C).