

Allgemeine Informationen

Katalog-Nr.: 66849-1-Ig	GenBank-Zugangsnummer: BC093706	Reinigungsmethode: Protein-G-Reinigung
Größe: 150ul, Konzentration: 1900 µg/ml von10814 Nanodrop und 1000 µg/ml durch die Bradford-Methode mit BSA als Standard;	GeneID (NCBI): 10814	CloneNo.: 1B2A11
Wirt: Maus	Vollständiger Name: complexin 2	Empfohlene Verdünnungen: WB 1:500-1:3000 IHC 1:250-1:1000
Isotyp: IgG1	Berechnete Masse: 134 aa, 15 kDa	
Immunogen Katalognummer: AG27949	Beobachtete Masse: 18-20 kDa	

Anwendungen

Geprüfte Anwendungen:

IHC, WB, ELISA

Getestete Reaktivität:

Hausschwein, Human, Maus, Ratte

Hinweis-IHC: Antigenmaskierung mit TE-Puffer pH 9,0 empfohlen. (*) Wahlweise kann die Antigenmaskierung auch mit Citratpuffer pH 6,0 erfolgen.

Positivkontrollen:

WB: Maushirngewebe, Maus-Cerebellum-Gewebe, Ratten-Cerebellum-Gewebe, Rattenhirngewebe

IHC: Maushirngewebe,

Hintergrundinformationen

Complexins are soluble proteins that regulate the activity of soluble N-ethylmaleimide-sensitive factor attachment protein receptor (SNARE) complexes necessary for vesicle fusion. Neuronal specific complexin 1 (CPLX1) has inhibitory and stimulatory effects on exocytosis by clamping trans-SNARE complexes in a pre-fusion state and promoting conformational changes to facilitate membrane fusion following cell stimulation. Complexin2 (CPLX2) is a pre-synaptic protein believed to regulate neurotransmitter release from pre-synaptic terminals, it is downregulated in schizophrenic patients suffering from depression, animal models of depression and neurological disorders such as Huntington's disease in which depression is a major symptom.

Lagerung

Lagerungsbedingungen:

Bei -20°C lagern. Nach dem Versand ein Jahr lang stabil

Lagerungspuffer:

PBS mit 0.02% Natriumazid und 50% Glycerin pH 7.3.

Aliquotieren ist nicht notwendig bei -20°C Lagerung

*** 20ul-Größen enthalten 0.1% BSA

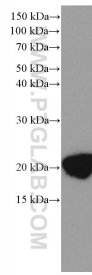
For technical support and original validation data for this product please contact:

T: 1 (888) 4PTGLAB (1-888-478-4522) (toll free in USA), or 1(312) 455-8498 (outside USA)

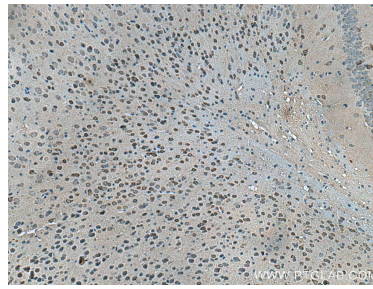
E: proteintech@ptglab.com
W: ptglab.com

This product is exclusively available under Proteintech Group brand and is not available to purchase from any other manufacturer.

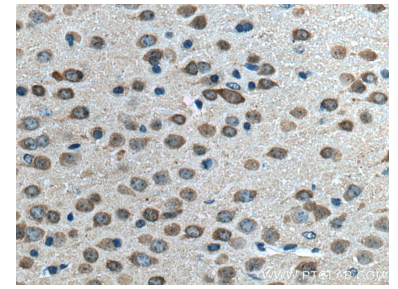
Ausgewählte Validierungsdaten



mouse brain tissue were subjected to SDS PAGE followed by western blot with 66849-1-Ig (CPLX2 antibody) at dilution of 1:1500 incubated at room temperature for 1.5 hours.



Immunohistochemical analysis of paraffin-embedded mouse brain tissue slide using 66849-1-Ig (CPLX2 antibody) at dilution of 1:500 (under 10x lens). Heat mediated antigen retrieval with Tris-EDTA buffer (pH 9.0).



Immunohistochemical analysis of paraffin-embedded mouse brain tissue slide using 66849-1-Ig (CPLX2 antibody) at dilution of 1:500 (under 40x lens). Heat mediated antigen retrieval with Tris-EDTA buffer (pH 9.0).