

Nur für Forschungszwecke

# KLF5 Monoklonaler Antikörper

Katalog-Nr.:66850-1-Ig

Vorgestelltes Produkt

1 Publikationen



## Allgemeine Informationen

Katalog-Nr.:

66850-1-Ig

GenBank-Zugangsnummer:

BC042131

Reinigungsmethode:

Protein-G-Reinigung

Größe:

150ul, Konzentration: 1300 µg/ml von688

GeneID (NCBI):

2C11C5

CloneNo.:

2C11C5

Nanodrop und 833 µg/ml durch die Bradford-Methode mit BSA als Standard;

Vollständiger Name:

Kruppel-like factor 5 (intestinal)

Empfohlene Verdünnungen:

WB 1:2000-1:10000

Wirt:

Maus

Berechnete Masse:

457 aa, 51 kDa

Beobachtete Masse:

51-57 kDa

Isotyp:

IgG1

Immunogen Katalognummer:

AG15403

## Anwendungen

Geprüfte Anwendungen:

FC, WB, ELISA

Positivkontrollen:

WB : HeLa-Zellen, A549-Zellen, NCI-H1299-Zellen

In Publikationen genannte Anwendungen:

IHC

Getestete Reaktivität:

Human, Maus

Zitierte Arten:

Human

## Hintergrundinformationen

KLF5, also known as BTEB2 and IKLF, is a member of the Krueppel-like transcription factor family. It is a transcription factor for SMemb/non-muscle myosin heavy chain-B (NMHC-B). It is a molecular marker of phenotypically modulated smooth-muscle cells. KLF5 seems to be a key element linking external stress and cardiovascular remodeling.

## Bemerkenswerte Veröffentlichungen

Verfasser

Pubmed ID

Journal

Anwendung

Ping Zhao

37063424

Int J Biol Sci

IHC

## Lagerung

Lagerungsbedingungen:

Bei -20°C lagern. Nach dem Versand ein Jahr lang stabil

Lagerungspuffer:

PBS mit 0.02% Natriumazid und 50% Glycerin pH 7.3.

Aliquotieren ist nicht notwendig bei -20°C Lagerung

\*\*\* 20ul-Größen enthalten 0.1% BSA

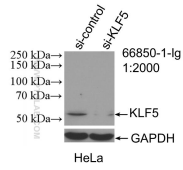
For technical support and original validation data for this product please contact:

T: 1 (888) 4PTGLAB (1-888-478-4522) (toll free in USA), or 1(312) 455-8498 (outside USA)

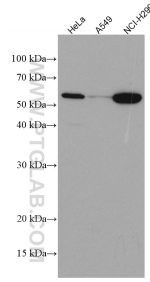
E: proteintech@ptglab.com  
W: ptglab.com

This product is exclusively available under Proteintech Group brand and is not available to purchase from any other manufacturer.

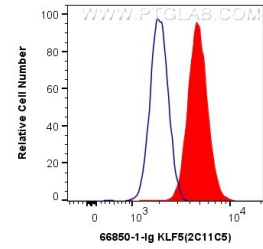
## Ausgewählte Validierungsdaten



WB result of KLF5 antibody (66850-1-Ig; 1:2000; incubated at room temperature for 1.5 hours) with sh-Control and sh-KLF5 transfected HeLa cells.



Various lysates were subjected to SDS PAGE followed by western blot with 66850-1-Ig (KLF5 antibody) at dilution of 1:2000 incubated at room temperature for 1.5 hours.



1X10<sup>6</sup> HeLa cells were intracellularly stained with 0.5 ug Anti-Human KLF5 (66850-1-Ig, Clone:2C11C5) (red) labeled with FlexAble CoraLite® Plus 555 Antibody Labeling Kit for Mouse IgG1 (KFA022), or 0.5 ug Control Antibody. Cells were fixed and permeabilized with Transcription Factor Staining Buffer Kit (PF00011).