

Allgemeine Informationen

Katalog-Nr.: 66855-1-Ig	GenBank-Zugangsnummer: BC132684	Reinigungsmethode: Protein-G-Reinigung
Größe: 150ul, Konzentration: 1200 µg/ml von3570 Nanodrop und 667 µg/ml durch die Bradford-Methode mit BSA als Standard;	GeneID (NCBI): interleukin 6 receptor	CloneNo.: 2A5F4
Wirt: Maus	Vollständiger Name: interleukin 6 receptor	Empfohlene Verdünnungen: WB 1:1000-1:4000 IHC 1:200-1:800
Isotyp: IgG1	Berechnete Masse: 468 aa, 52 kDa	
Immunogen Katalognummer: AG18263	Beobachtete Masse: 80 kDa	

Anwendungen

Geprüfte Anwendungen: IHC, WB, ELISA	Positivkontrollen:
Getestete Reaktivität: Human	WB: humanes Milzgewebe, Human peripheral blood leukocyte
Hinweis-IHC: Antigenmaskierung mit TE-Puffer pH 9,0 empfohlen. (*) Wahlweise kann die Antigenmaskierung auch mit Citratpuffer pH 6,0 erfolgen.	IHC: humanes Leberkarzinomgewebe, humanes Tonsillitidgebebe

Hintergrundinformationen

Interleukin-6 (IL-6) is a pleiotropic cytokine produced by a variety of cells during infection, trauma, and immunological challenge (PMID: 8274730). IL-6 acts via a receptor complex consisting of two distinct membrane-bound glycoproteins, an 80-kDa IL-6-binding subunit (IL-6R alpha, CD126, gp80) and a 130-kDa signal-transducing element (gp130, CD130). After binding of IL-6 to membrane-bound IL-6R alpha, the complex of IL-6 and IL-6R alpha associates with gp130, thus activating the receptor (PMID: 9716487). Expression of gp130 is found in almost all organs while expression of IL-6R alpha is predominantly confined to hepatocytes and leukocyte subpopulations (monocytes, neutrophils, T cells, and B cells) (PMID: 11149892). Soluble form of IL-6R alpha has been found in human serum and urine (PMID: 2529343; 1545125).

Lagerung

Lagerungsbedingungen:
Bei -20°C lagern. Nach dem Versand ein Jahr lang stabil
Lagerungspuffer:
PBS mit 0.02% Natriumazid und 50% Glycerin pH 7.3.
Aliquotieren ist nicht notwendig bei -20°C Lagerung

***** 20ul-Größen enthalten 0.1% BSA**

For technical support and original validation data for this product please contact:

T: 1 (888) 4PTGLAB (1-888-478-4522) (toll free in USA), or 1(312) 455-8498 (outside USA)

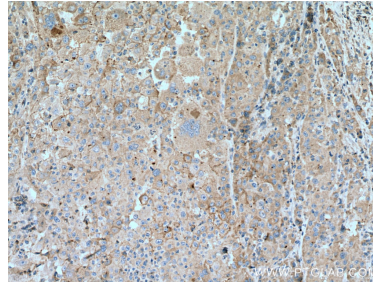
E: proteintech@ptglab.com
W: ptglab.com

This product is exclusively available under Proteintech Group brand and is not available to purchase from any other manufacturer.

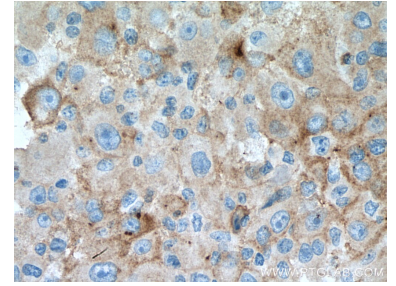
Ausgewählte Validierungsdaten



human spleen tissue were subjected to SDS PAGE followed by western blot with 66855-1-Ig (IL6R alpha antibody) at dilution of 1:2000 incubated at room temperature for 1.5 hours.



Immunohistochemical analysis of paraffin-embedded human liver cancer tissue slide using 66855-1-Ig (IL6R alpha antibody) at dilution of 1:400 (under 10x lens). Heat mediated antigen retrieval with Tris-EDTA buffer (pH 9.0).



Immunohistochemical analysis of paraffin-embedded human liver cancer tissue slide using 66855-1-Ig (IL6R alpha antibody) at dilution of 1:400 (under 40x lens). Heat mediated antigen retrieval with Tris-EDTA buffer (pH 9.0).