

## Allgemeine Informationen

<b>Katalog-Nr.:</b> 66858-1-Ig	<b>GenBank-Zugangsnummer:</b> BC012342	<b>Reinigungsmethode:</b> Protein-A-Reinigung
<b>Größe:</b> 150ul , Konzentration: 1400 µg/ml von1540 Nanodrop und 1000 µg/ml durch die Bradford-Methode mit BSA als Standard;	<b>GeneID (NCBI):</b> 1540	<b>CloneNo.:</b> 1G2F4
<b>Wirt:</b> Maus	<b>Vollständiger Name:</b> cylindromatosis (turban tumor syndrome)	<b>Empfohlene Verdünnungen:</b> WB 1:500-1:3000 IF 1:50-1:500
<b>Isotyp:</b> IgG2a	<b>Berechnete Masse:</b> 107 kDa	
<b>Immunogen Katalognummer:</b> AG28333	<b>Beobachtete Masse:</b> 110 kDa	

## Anwendungen

<b>Geprüfte Anwendungen:</b> IF, WB, ELISA	<b>Positivkontrollen:</b> WB : Hausschwein-Hirngewebe, A431-Zellen, HEK-293-Zellen, Kaninchenhirngewebe, Maushirngewebe, Rattenhirngewebe IF : SH-SY5Y-Zellen,
<b>Getestete Reaktivität:</b> Hausschwein, Human, Kaninchen, Maus, Ratte	

## Hintergrundinformationen

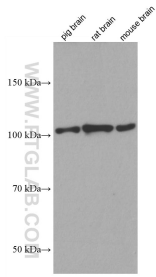
CYLD, also named as CYLD1, belongs to the peptidase C67 family. It is the protease that specifically cleaves 'Lys-63'-linked polyubiquitin chains. CYLD has endodeubiquitinase activity and plays an important role in the regulation of pathways leading to NF-kappa-B activation. CYLD contributes to the regulation of cell survival, proliferation and differentiation via its effects on NF-kappa-B activation. It is a negative regulator of Wnt signaling. CYLD inhibits HDAC6 and thereby promotes acetylation of alpha-tubulin and stabilization of microtubules. CYLD plays a role in the regulation of microtubule dynamics, and thereby contributes to the regulation of cell proliferation, cell polarization, cell migration, and angiogenesis. It is required for normal cell cycle progress and normal cytokinesis. CYLD inhibits nuclear translocation of NF-kappa-B and plays a role in the regulation of inflammation and the innate immune response, via its effects on NF-kappa-B activation. It is dispensable for the maturation of intrathymic natural killer cells, but required for the continued survival of immature natural killer cells. CYLD negatively regulates TNFRSF11A signaling and osteoclastogenesis.

## Lagerung

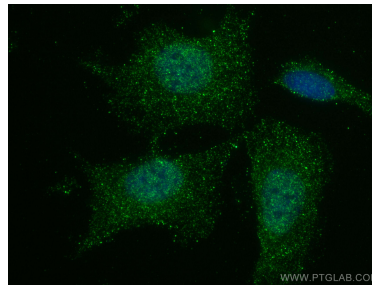
**Lagerungsbedingungen:**  
Bei -20°C lagern. Nach dem Versand ein Jahr lang stabil  
**Lagerungspuffer:**  
PBS mit 0.02% Natriumazid und 50% Glycerin pH 7.3.  
**Aliquotieren ist nicht notwendig bei -20°C Lagerung**

**\*\*\* 20ul-Größen enthalten 0.1% BSA**

## Ausgewählte Validierungsdaten



Various lysates were subjected to SDS PAGE followed by western blot with 66858-1-Ig (CYLD antibody) at dilution of 1:1500 incubated at room temperature for 1.5 hours.



Immunofluorescent analysis of (4% PFA) fixed SH-SY5Y cells using CYLD antibody (66858-1-Ig, Clone: 1G2F4) at dilution of 1:100 and CoraLite®488-Conjugated AffiniPure Goat Anti-Mouse IgG(H+L).