

Allgemeine Informationen

Katalog-Nr.: 66862-1-Ig	GenBank-Zugangsnummer: BC023978	Reinigungsmethode: Protein-G-Reinigung
Größe: 150ul , Konzentration: 1400 µg/ml von5105 Nanodrop und 760 µg/ml durch die Bradford-Methode mit BSA als Standard;	GeneID (NCBI): 5105	CloneNo.: 2F11B5
Wirt: Maus	Vollständiger Name: phosphoenolpyruvate carboxykinase 1 (soluble)	Empfohlene Verdünnungen: WB 1:1000-1:4000 IHC 1:200-1:800 IF 1:50-1:500
Isotyp: IgG1	Berechnete Masse: 622 aa, 69 kDa	
Immunogen Katalognummer: AG9720	Beobachtete Masse: 65-69 kDa	

Anwendungen

Geprüfte Anwendungen:

IF, IHC, WB, ELISA

Getestete Reaktivität:

Hausschwein, Human, Maus, Ratte

Hinweis-IHC: Antigenmaskierung mit TE-Puffer pH 9,0 empfohlen. (*) Wahlweise kann die Antigenmaskierung auch mit Citratpuffer pH 6,0 erfolgen.

Positivkontrollen:

WB : Hausschwein-Nierengewebe, Hausschwein-Lebergewebe, Rattenlebergewebe

IHC : Mausnierengewebe, humanes Kolongewebe, humanes Nierengewebe

IF : HeLa-Zellen,

Hintergrundinformationen

PCK1(Phosphoenolpyruvate carboxykinase, cytosolic) is also named as PEPCK1 and belongs to the phosphoenolpyruvate carboxykinase [GTP] family. It catalyzes the formation of phosphoenolpyruvate from oxaloacetate, with the release of carbon dioxide and GDP. It is also a main control point for the regulation of gluconeogenesis. In eukaryotes there are two isozymes: a cytoplasmic one and a mitochondrial one. Defects in PCK1 are the cause of cytosolic phosphoenolpyruvate carboxykinase deficiency (C-PEPCKD).

Lagerung

Lagerungsbedingungen:

Bei -20°C lagern. Nach dem Versand ein Jahr lang stabil

Lagerungspuffer:

PBS mit 0.02% Natriumazid und 50% Glycerin pH 7.3.

Aliquotieren ist nicht notwendig bei -20°C Lagerung

***** 20ul-Größen enthalten 0.1% BSA**

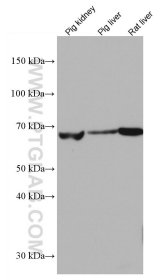
For technical support and original validation data for this product please contact:

T: 1 (888) 4PTGLAB (1-888-478-4522) (toll free in USA), or 1(312) 455-8498 (outside USA)

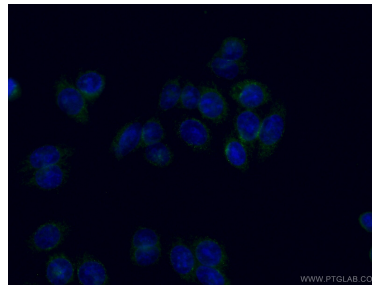
E: proteintech@ptglab.com
W: ptglab.com

This product is exclusively available under Proteintech Group brand and is not available to purchase from any other manufacturer.

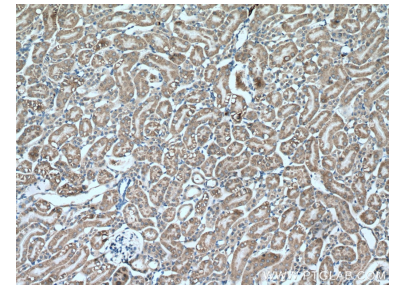
Ausgewählte Validierungsdaten



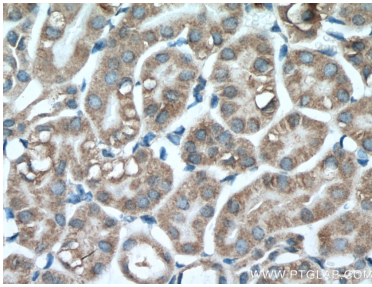
Various lysates were subjected to SDS PAGE followed by western blot with 66862-1-Ig (PCK1 antibody) at dilution of 1:2000 incubated at room temperature for 1.5 hours.



Immunofluorescent analysis of (4% PFA) fixed HeLa cells using 66862-1-Ig (PCK1 antibody) at dilution of 1:100 and CoraLite488-Conjugated AffiniPure Goat Anti-Mouse IgG(H+L).



Immunohistochemical analysis of paraffin-embedded mouse kidney tissue slide using 66862-1-Ig (PCK1 antibody) at dilution of 1:400 (under 10x lens. Heat mediated antigen retrieval with Tris-EDTA buffer (pH 9.0).



Immunohistochemical analysis of paraffin-embedded mouse kidney tissue slide using 66862-1-Ig (PCK1 antibody) at dilution of 1:400 (under 40x lens. Heat mediated antigen retrieval with Tris-EDTA buffer (pH 9.0).