

Nur für Forschungszwecke

# Annexin A10 Monoklonaler Antikörper

Katalog-Nr.:66869-1-Ig



## Allgemeine Informationen

<b>Katalog-Nr.:</b> 66869-1-Ig	<b>GenBank-Zugangsnummer:</b> BC007320	<b>Reinigungsmethode:</b> Protein-A-Reinigung
<b>Größe:</b> 150ul , Konzentration: 1800 µg/ml von11199 Nanodrop und 1000 µg/ml durch die Bradford-Methode mit BSA als Standard;	<b>GeneID (NCBI):</b> annexin A10	<b>CloneNo.:</b> 1A7A11
<b>Wirt:</b> Maus	<b>Vollständiger Name:</b> annexin A10	<b>Empfohlene Verdünnungen:</b> WB 1:1000-1:3000 IHC 1:400-1:1600 IF 1:200-1:800
<b>Isotyp:</b> IgG2a	<b>Berechnete Masse:</b> 37 kDa	
<b>Immunogen Katalognummer:</b> AG27098	<b>Beobachtete Masse:</b> 37 kDa	

## Anwendungen

<b>Geprüfte Anwendungen:</b> IF, IHC, WB, ELISA	<b>Positivkontrollen:</b> WB : Hausschwein-Magengewebe, HT-29-Zellen
<b>Getestete Reaktivität:</b> Hausschwein, Human, Maus	<b>IHC :</b> humanes Magengewebe, humanes Kolongewebe, humanes Kolonkarzinomgewebe, humanes Pankreaskarzinomgewebe, Maus-Pankreasgewebe
<b>Hinweis-IHC: Antigendemaskierung mit TE-Puffer pH 9,0 empfohlen. (*) Wahlweise kann die Antigendemaskierung auch mit Citratpuffer pH 6,0 erfolgen.</b>	<b>IF :</b> humanes Kolonkarzinomgewebe,

## Hintergrundinformationen

ANXA10, member of the Annexin family, is a calcium-and-phospholipid-binding protein. It is implicated in multiple physiological processes, including growth regulation, cell division, apoptosis, and differentiation. ANXA10 was recently observed to be upregulated in Barrett's esophagus, oral cancers, pancreatic cancer and colon cancer.

## Lagerung

**Lagerungsbedingungen:**  
Bei -20°C lagern. Nach dem Versand ein Jahr lang stabil

**Lagerungspuffer:**  
PBS mit 0.02% Natriumazid und 50% Glycerin pH 7.3.

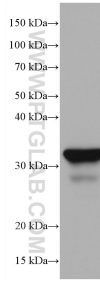
Aliquotieren ist nicht notwendig bei -20°C Lagerung

\*\*\* 20ul-Größen enthalten 0.1% BSA

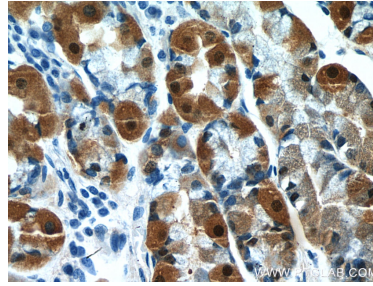
For technical support and original validation data for this product please contact:  
T: 1 (888) 4PTGLAB (1-888-478-4522) (toll free in USA), or 1(312) 455-8498 (outside USA)  
E: proteintech@ptglab.com  
W: ptglab.com

This product is exclusively available under Proteintech Group brand and is not available to purchase from any other manufacturer.

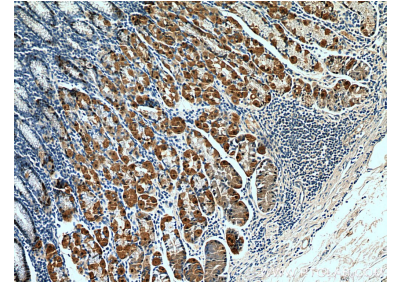
## Ausgewählte Validierungsdaten



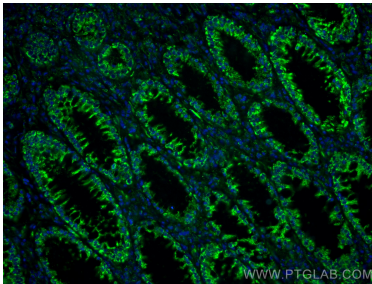
pig stomach tissue were subjected to SDS PAGE followed by western blot with 66869-1-Ig (Annexin A10 antibody) at dilution of 1:2100 incubated at room temperature for 1.5 hours.



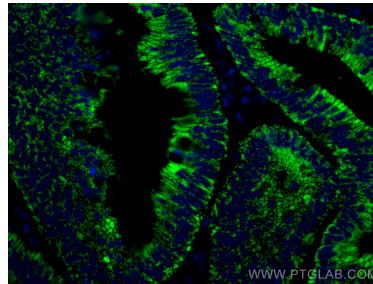
Immunohistochemical analysis of paraffin-embedded human stomach tissue slide using 66869-1-Ig (Annexin A10 antibody) at dilution of 1:800 (under 40x lens). Heat mediated antigen retrieval with Tris-EDTA buffer (pH 9.0).



Immunohistochemical analysis of paraffin-embedded human stomach tissue slide using 66869-1-Ig (Annexin A10 antibody) at dilution of 1:800 (under 10x lens). Heat mediated antigen retrieval with Tris-EDTA buffer (pH 9.0).



Immunofluorescent analysis of (4% PFA) fixed human colon cancer tissue using Annexin A10 antibody (66869-1-Ig, Clone: 1A7A11) at dilution of 1:400 and CoraLite®488-Conjugated AffiniPure Goat Anti-Mouse IgG(H+L).



Immunofluorescent analysis of (4% PFA) fixed human colon cancer tissue using Annexin A10 antibody (66869-1-Ig, Clone: 1A7A11) at dilution of 1:400 and CoraLite®488-Conjugated AffiniPure Goat Anti-Mouse IgG(H+L).