

Nur für Forschungszwecke

SREBF1 Monoklonaler Antikörper

Katalog-Nr.: 66875-1-Ig

Vorgestelltes Produkt

32 Publikationen



Allgemeine Informationen

Katalog-Nr.:
66875-1-Ig

Größe:
150ul, Konzentration: 2228 µg/ml von 6720
Nanodrop und 1000 µg/ml durch die
Bradford-Methode mit BSA als
Standard;

Wirt:
Maus

Isotyp:
IgG1

Immunogen Katalognummer:
AG5484

GenBank-Zugangsnummer:
BC063281

GeneID (NCBI):

Vollständiger Name:
sterol regulatory element binding
transcription factor 1

Berechnete Masse:
1177 aa, 125 kDa

Beobachtete Masse:
125 kDa

Reinigungsmethode:
Protein-G-Reinigung

CloneNo.:
1B6G5

Empfohlene Verdünnungen:
WB 1:1000-1:4000
IHC 1:50-1:500
IF 1:200-1:800

Anwendungen

Geprüfte Anwendungen:

IF, IHC, WB, ELISA

In Publikationen genannte Anwendungen:

IF, IHC, IP, WB

Getestete Reaktivität:

Human

Zitierte Arten:

Human, Rind

Hinweis-IHC: Antigendemaskierung mit TE-Puffer pH 9,0 empfohlen. (*) Wahlweise kann die Antigendemaskierung auch mit Citratpuffer pH 6,0 erfolgen.

Positivkontrollen:

WB: A549-Zellen, HeLa-Zellen, HT-29-Zellen, Jurkat-Zellen, L02-Zellen, MCF-7-Zellen

IHC: humanes Nierengewebe,

IF: HepG2-Zellen,

Hintergrundinformationen

SREBF1, also named as BHLHD1 and SREBP1, contains one basic helix-loop-helix (bHLH) domain and belongs to the SREBP family. It is a transcriptional activator required for lipid homeostasis. The SREBPs are synthesized as precursors anchored to endoplasmic reticulum (ER) membranes and complexed with SCAP. When the cellular cholesterol level is low, SREBP-SCAP complexes move to the Golgi apparatus, where SREBPs undergo a two-step proteolytic processing, leading to the release of the mature form, an N-terminal fragment, i.e. basic helix-loop-helix leucine zipper transcription factor. These factors enter the nucleus where they bind to sterol regulatory elements (SRE) in the promoter regions of a number of genes whose products mediate the synthesis of cholesterol and fatty acids. [PMID: 21698267]. This antibody can recognize the 125kd precursor form and the 68kd mature form of human SREBF1.

Bemerkenswerte Veröffentlichungen

Verfasser	Pubmed ID	Journal	Anwendung
Chang Wang	33013689	Front Endocrinol (Lausanne)	WB
Zhen Zhen	31475773	Cell Biol Int	WB
Xiao Gu	36206922	Reprod Toxicol	WB

Lagerung

Lagerungsbedingungen:

Bei -20°C lagern. Nach dem Versand ein Jahr lang stabil

Lagerungspuffer:

PBS mit 0.02% Natriumazid und 50% Glycerin pH 7.3.

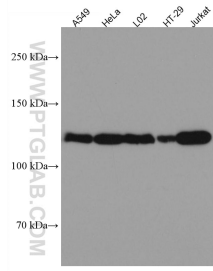
Aliquotieren ist nicht notwendig bei -20°C Lagerung

*** 20ul-Größen enthalten 0.1% BSA

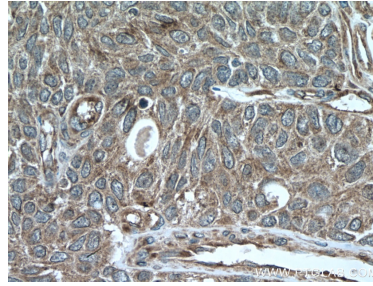
For technical support and original validation data for this product please contact:
T: 1 (888) 4PTGLAB (1-888-478-4522) (toll free in USA), or 1(312) 455-8498 (outside USA)
E: proteintech@ptglab.com
W: ptglab.com

This product is exclusively available under Proteintech Group brand and is not available to purchase from any other manufacturer.

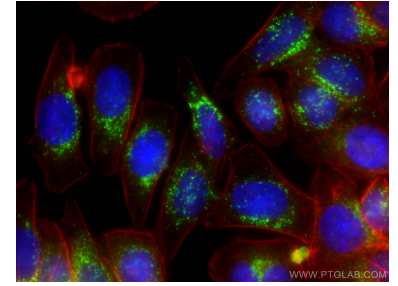
Ausgewählte Validierungsdaten



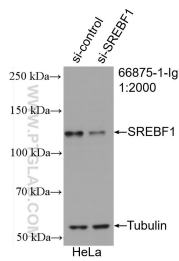
Various lysates were subjected to SDS PAGE followed by western blot with 66875-1-Ig (SREBF1 antibody) at dilution of 1:2000 incubated at room temperature for 1.5 hours.



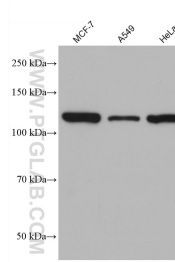
Immunohistochemical analysis of paraffin-embedded human kidney tissue slide using 66875-1-Ig (SREBF1 antibody) at dilution of 1:200 (under 40x lens. Heat mediated antigen retrieval with Tris-EDTA buffer (pH 9.0).



Immunofluorescent analysis of (-20°C Ethanol) fixed HepG2 cells using SREBF1 antibody (66875-1-Ig, Clone: 1B6G5) at dilution of 1:400 and CoraLite®488-Conjugated AffiniPure Goat Anti-Mouse IgG(H+L). CL594-Phalloidin stains the F-actin (red). DAPI (blue).



WB result of SREBF1 antibody (66875-1-Ig; 1:2000; incubated at room temperature for 1.5 hours) with sh-Control and sh-SREBF1 transfected HeLa cells.



Various lysates were subjected to SDS PAGE followed by western blot with 66875-1-Ig (SREBF1 antibody) at dilution of 1:8000 incubated at room temperature for 1.5 hours.