

Nur für Forschungszwecke

S6 Ribosomal protein Monoklonaler Antikörper



Katalog-Nr.: 66886-1-Ig **9 Publikationen**

Allgemeine Informationen

Katalog-Nr.: 66886-1-Ig	GenBank-Zugangsnummer: BC000524	Reinigungsmethode: Protein-A-Reinigung
Größe: 150ul, Konzentration: 1800 µg/ml von 6194 Nanodrop und 1000 µg/ml durch die Bradford-Methode mit BSA als Standard;	GeneID (NCBI): von 6194	CloneNo.: 1C3E10
Wirt: Maus	Vollständiger Name: ribosomal protein S6	Empfohlene Verdünnungen: WB 1:5000-1:50000 IF 1:50-1:500
Isotyp: IgG2a	Berechnete Masse: 29 kDa	
Immunogen Katalognummer: AG6599	Beobachtete Masse: 29-32 kDa	

Anwendungen

Geprüfte Anwendungen: FC, IF, WB, ELISA	Positivkontrollen:
In Publikationen genannte Anwendungen: FC, IF, WB	WB: HeLa-Zellen, A431-Zellen, HEK-293-Zellen, Jurkat-Zellen, NIH/3T3-Zellen, Rattenlebergewebe, RAW 264.7-Zellen
Getestete Reaktivität: Human, Maus, Ratte	IF: HepG2-Zellen,
Zitierte Arten: Human, Maus, Ratte	

Hintergrundinformationen

Ribosomal protein S6 (RPS6), Phosphoprotein NP33. It may play an important role in controlling cell growth and proliferation through the selective translation of particular classes of mRNA. Ribosomal protein S6 is the major substrate of protein kinases in eukaryote ribosomes. The phosphorylation is stimulated by growth factors, tumor promoting agents, and mitogens. It is dephosphorylated at growth arrest. Phosphorylated at Ser-235 and Ser-236 by RPS6KA1 and RPS6KA3; phosphorylation at these sites facilitates the assembly of the preinitiation complex.

Bemerkenswerte Veröffentlichungen

Verfasser	Pubmed ID	Journal	Anwendung
Yifan Hong	34649140	Ecotoxicol Environ Saf	WB
Dongdong Yang	36417878	Cell Rep	WB
Yaoxiang Tang	35596155	BMC Cancer	WB

Lagerung

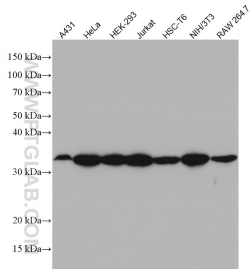
Lagerungsbedingungen:
Bei -20°C lagern. Nach dem Versand ein Jahr lang stabil
Lagerungspuffer:
PBS mit 0.02% Natriumazid und 50% Glycerin pH 7.3.
Aliquotieren ist nicht notwendig bei -20°C Lagerung

***** 20ul-Größen enthalten 0.1% BSA**

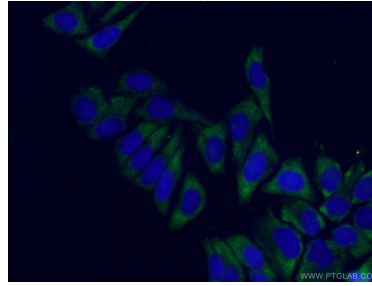
For technical support and original validation data for this product please contact:
T: 1 (888) 4PTGLAB (1-888-478-4522) (toll free in USA), or 1(312) 455-8498 (outside USA)
E: proteintech@ptglab.com
W: ptglab.com

This product is exclusively available under Proteintech Group brand and is not available to purchase from any other manufacturer.

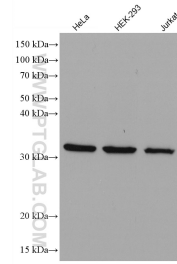
Ausgewählte Validierungsdaten



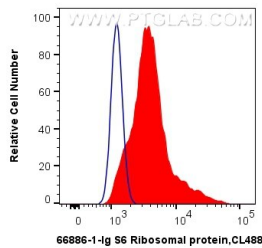
Various lysates were subjected to SDS PAGE followed by western blot with 66886-1-Ig (S6 Ribosomal protein antibody) at dilution of 1:500 incubated at room temperature for 1.5 hours.



Immunofluorescent analysis of (-20°C Ethanol) fixed HepG2 cells using 66886-1-Ig (S6 Ribosomal protein antibody) at dilution of 1:100 and CoraLite488-Conjugated AffiniPure Goat Anti-Mouse IgG(H+L).



Various lysates were subjected to SDS PAGE followed by western blot with 66886-1-Ig (S6 Ribosomal protein antibody) at dilution of 1:15000 incubated at room temperature for 1.5 hours.



1X10⁶ HepG2 cells were intracellularly stained with 0.4 µg Anti-Human S6 Ribosomal protein (66886-1-Ig, Clone:1C3E10) and CoraLite®488-Conjugated AffiniPure Goat Anti-Mouse IgG(H+L) at dilution 1:1000 (red), or 0.4 µg Control Antibody. Cells were fixed with 4% PFA and permeabilized with Flow Cytometry Perm Buffer (PF00011-C).