

Nur für Forschungszwecke

# DLC1 Monoklonaler Antikörper

Katalog-Nr.:66894-1-Ig



## Allgemeine Informationen

<b>Katalog-Nr.:</b> 66894-1-Ig	<b>GenBank-Zugangsnummer:</b> BC054511	<b>Reinigungsmethode:</b> Protein-G-Reinigung
<b>Größe:</b> 150ul , Konzentration: 2100 µg/ml von10395 Nanodrop und 980 µg/ml durch die Bradford-Methode mit BSA als Standard;	<b>GeneID (NCBI):</b> 10395	<b>CloneNo.:</b> 1G10H12
<b>Wirt:</b> Maus	<b>Vollständiger Name:</b> deleted in liver cancer 1	<b>Empfohlene Verdünnungen:</b> WB 1:2000-1:10000 IF 1:400-1:1600
<b>Isotyp:</b> IgG1	<b>Berechnete Masse:</b> 171 kDa	
<b>Immunogen Katalognummer:</b> AG24404	<b>Beobachtete Masse:</b> 115 kDa	

## Anwendungen

<b>Geprüfte Anwendungen:</b> IF, WB, ELISA	<b>Positivkontrollen:</b>
<b>Getestete Reaktivität:</b> Human	<b>WB :</b> NCI-H1299-Zellen, A549-Zellen, HepG2-Zellen <b>IF :</b> A375-Zellen, HepG2-Zellen

## Hintergrundinformationen

Deleted in Liver Cancer 1 (DLC1) is a RhoGAP-containing tumor suppressor that inhibits angiogenesis by repressing VEGF production in epithelial cells. DLC1 is often down-regulated in a variety of cancers, such as those of the liver, lung, breast, stomach, brain, colon and prostate due to either genomic deletion or aberrant DNA methylation.

## Lagerung

**Lagerungsbedingungen:**  
Bei -20°C lagern. Nach dem Versand ein Jahr lang stabil  
**Lagerungspuffer:**  
PBS mit 0.02% Natriumazid und 50% Glycerin pH 7.3.  
Aliquotieren ist nicht notwendig bei -20°C Lagerung

**\*\*\* 20ul-Größen enthalten 0.1% BSA**

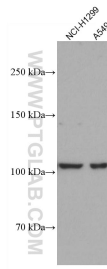
For technical support and original validation data for this product please contact:

T: 1 (888) 4PTGLAB (1-888-478-4522) (toll free  
in USA), or 1(312) 455-8498 (outside USA)

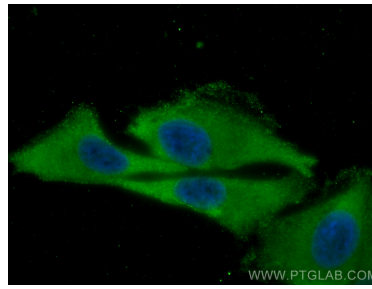
E: proteintech@ptglab.com  
W: ptglab.com

**This product is exclusively available under Proteintech Group brand and is not available to purchase from any other manufacturer.**

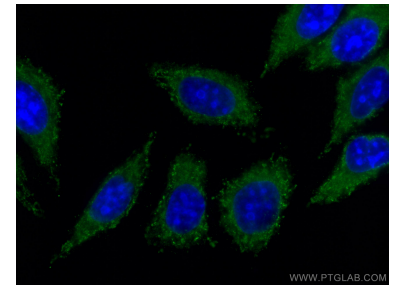
## Ausgewählte Validierungsdaten



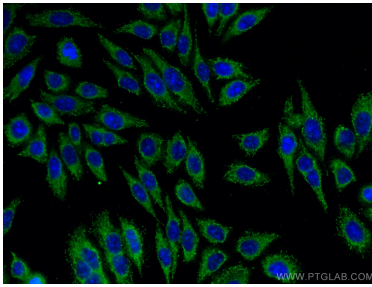
Various lysates were subjected to SDS PAGE followed by western blot with 66894-1-Ig (DLC1 antibody) at dilution of 1:5000 incubated at room temperature for 1.5 hours.



Immunofluorescent analysis of (-20°C Methanol) fixed A375 cells using DLC1 antibody (66894-1-Ig, Clone: 1G10H12) at dilution of 1:800 and CoraLite®488-Conjugated AffiniPure Goat Anti-Mouse IgG(H+L).



Immunofluorescent analysis of (-20°C Methanol) fixed HepG2 cells using DLC1 antibody (66894-1-Ig, Clone: 1G10H12) at dilution of 1:400 and CoraLite®488-Conjugated AffiniPure Goat Anti-Mouse IgG(H+L).



Immunofluorescent analysis of (-20°C Methanol) fixed HepG2 cells using DLC1 antibody (66894-1-Ig, Clone: 1G10H12) at dilution of 1:400 and CoraLite®488-Conjugated AffiniPure Goat Anti-Mouse IgG(H+L).