

Nur für Forschungszwecke

GLI1 Monoklonaler Antikörper

Katalog-Nr.:66905-1-Ig

Vorgestelltes Produkt

49 Publikationen



Allgemeine Informationen

Katalog-Nr.: 66905-1-Ig	GenBank-Zugangsnummer: BC013000	Reinigungsmethode: Protein-A-Reinigung
Größe: 150ul, Konzentration: 1000 µg/ml durch die Bradford-Methode mit BSA als Standard;	GeneID (NCBI): 2735	CloneNo.: 1D2B2
Wirt: Maus	Vollständiger Name: GLI family zinc finger 1	Empfohlene Verdünnungen: WB 1:5000-1:50000 IF 1:400-1:1600
Isotyp: IgG1	Berechnete Masse: 1106 aa, 118 kDa	
Immunogen Katalognummer: AG27832	Beobachtete Masse: 150 kDa	

Anwendungen

Geprüfte Anwendungen:

IF, WB, ELISA

In Publikationen genannte Anwendungen:

ColP, IF, IHC, WB

Getestete Reaktivität:

Hausschwein, Human, Maus, Ratte

Zitierte Arten:

Human, Maus, Ratte

Positivkontrollen:

WB : A549-Zellen, BxPC-3-Zellen, C6-Zellen, Hausschwein-Hirngewebe, HEK-293-Zellen, humanes Hodengewebe, Moushirngewebe, Mauslebergewebe, MCF-7-Zellen, MDA-MB-231-Zellen, NCI-H1299-Zellen, Rattenhirngewebe, Rattenlebergewebe, U-251-Zellen

IF : HeLa-Zellen,

Hintergrundinformationen

GLI1, also known as Glioma-associated oncogene, is a 1106 amino acid protein, which belongs to the GLI C2H2-type zinc-finger protein family. GLI1 is detected in testis and Also expressed in the brain with highest expression in the cerebellum, optic nerve and olfactory tract. GLI1 is tethered in the cytoplasm by binding to SUFU (PubMed:10806483). GLI1 is activated and translocated to the nucleus promoted by interaction with STK36 (PubMed:10806483). Phosphorylation of GLI1 by ULK3 may promote nuclear localization (PubMed:19878745). GLI1 as a transcriptional activator may regulate the transcription of specific genes during normal development (PubMed:19706761). GLI1 plays a role in craniofacial development and digital development, as well as development of the central nervous system and gastrointestinal tract and Mediates SHH signaling (PubMed:19706761). GLI1 plays a role in cell proliferation and differentiation via its role in SHH signaling.

Bemerkenswerte Veröffentlichungen

Verfasser	Pubmed ID	Journal	Anwendung
Qian Wang	32999044	Mol Cancer Ther	WB
Daosen Chen	34659557	J Cancer	WB,IHC
Yijia Jia	34522723	Regen Ther	IHC

Lagerung

Lagerungsbedingungen:

Bei -20°C lagern. Nach dem Versand ein Jahr lang stabil

Lagerungspuffer:

PBS mit 0.02% Natriumazid und 50% Glycerin pH 7.3.

Aliquotieren ist nicht notwendig bei -20°C Lagerung

*** 20ul-Größen enthalten 0.1% BSA

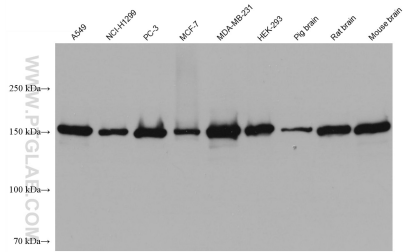
For technical support and original validation data for this product please contact:

T: 1 (888) 4PTGLAB (1-888-478-4522) (toll free in USA), or 1(312) 455-8498 (outside USA)

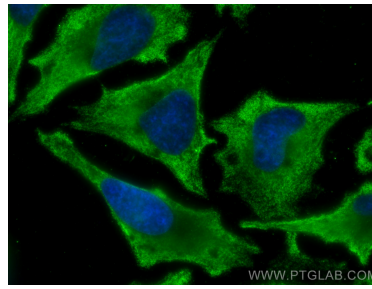
E: proteintech@ptglab.com
W: ptglab.com

This product is exclusively available under Proteintech Group brand and is not available to purchase from any other manufacturer.

Ausgewählte Validierungsdaten



Various lysates were subjected to SDS PAGE followed by western blot with 66905-1-Ig (GLI1 antibody) at dilution of 1:20000 incubated at room temperature for 1.5 hours.



Immunofluorescent analysis of (-20°C Ethanol) fixed HeLa cells using GLI1 antibody (66905-1-Ig, Clone: 1D2B2) at dilution of 1:800 and CoraLite® 488-Conjugated AffiniPure Goat Anti-Mouse IgG(H+L).