

Nur für Forschungszwecke

Cathepsin L Monoklonaler Antikörper



Katalog-Nr.:66914-1-Ig

Vorgestelltes Produkt

1 Publikationen

Allgemeine Informationen

Katalog-Nr.: 66914-1-Ig	GenBank-Zugangsnummer: BC012612	Reinigungsmethode: Protein-A-Reinigung
Größe: 150ul , Konzentration: 1400 µg/ml von1514 Nanodrop und 1000 µg/ml durch die Bradford-Methode mit BSA als Standard;	GeneID (NCBI): 1514	CloneNo.: 1A12G8
Wirt: Maus	Vollständiger Name: cathepsin L1	Empfohlene Verdünnungen: WB 1:1000-1:8000
Isotyp: IgG2b	Berechnete Masse: 38 kDa	
Immunogen Katalognummer: AG27951	Beobachtete Masse: 43 kDa	

Anwendungen

Geprüfte Anwendungen: WB, ELISA	Positivkontrollen: WB : A549-Zellen, HeLa-Zellen, HepG2-Zellen, HUVEC-Zellen, NCI-H1299-Zellen
In Publikationen genannte Anwendungen: WB	
Getestete Reaktivität: Human, Maus, Ratte	
Zitierte Arten: Human	

Hintergrundinformationen

CTSL1(Cathepsin L1) is also named as CTSL and MEP, belongs to the peptidase C1 family. It is a lysosomal proteinase whose expression is also up-regulated in the skeletal muscle during starvation(PMID:20088826). It plays an intracellular role in normal intestinal epithelial polarization and initiation of neoplasia(PMID:17622569). CTSL1 also improves cardiac function and inhibits cardiac hypertrophy, inflammation, and fibrosis through blocking AKT/GSK3B signaling(PMID:19096818). The full length protein is 38 kDa with a signal peptide, two propeptide and a glycosylation site. It has been detected the 36 kDa, 39 kDa, 29 kDa and 21 kDa in rat gastrocnemius muscle. These forms of cathepsin L could either be attributed to differences in glycosylation or to partial processing of the proenzyme. (PMID:11696001)

Bemerkenswerte Veröffentlichungen

Verfasser	Pubmed ID	Journal	Anwendung
Pingping Liu	36382580	Cancer Sci	WB

Lagerung

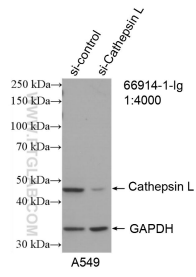
Lagerungsbedingungen:
Bei -20°C lagern. Nach dem Versand ein Jahr lang stabil
Lagerungspuffer:
PBS mit 0.02% Natriumazid und 50% Glycerin pH 7.3.
Aliquotieren ist nicht notwendig bei -20°C Lagerung

*** 20ul-Größen enthalten 0.1% BSA

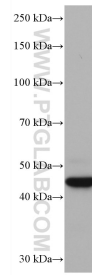
For technical support and original validation data for this product please contact:
T: 1 (888) 4PTGLAB (1-888-478-4522) (toll free in USA), or 1(312) 455-8498 (outside USA)
E: proteintech@ptglab.com
W: ptglab.com

This product is exclusively available under Proteintech Group brand and is not available to purchase from any other manufacturer.

Ausgewählte Validierungsdaten



WB result of Cathepsin L antibody (66914-1-Ig; 1:6000; incubated at room temperature for 1.5 hours) with sh-Control and sh-Cathepsin L transfected A549 cells.



A549 cells were subjected to SDS PAGE followed by western blot with 66914-1-Ig (Cathepsin L antibody) at dilution of 1:5000 incubated at room temperature for 1.5 hours.