

Nur für Forschungszwecke

CX3CR1 Monoklonaler Antikörper

Katalog-Nr.:66915-1-Ig



Allgemeine Informationen

Katalog-Nr.: 66915-1-Ig	GenBank-Zugangsnummer: BC028078	Reinigungsmethode: Protein-G-Reinigung
Größe: 150ul , Konzentration: 1800 µg/ml von1524 Nanodrop und 1000 µg/ml durch die Bradford-Methode mit BSA als Standard;	GeneID (NCBI): chemokine (C-X3-C motif) receptor 1	CloneNo.: 3D3B8
Wirt: Maus	Berechnete Masse: 40 kDa	Empfohlene Verdünnungen: WB 1:2000-1:10000
Isotyp: IgG1	Beobachtete Masse: 44 kDa	
Immunogen Katalognummer: AG27698		

Anwendungen

Geprüfte Anwendungen: WB,ELISA	Positivkontrollen: WB : HEK-293-Zellen, Jurkat-Zellen, SH-SY5Y-Zellen, U-937-Zellen
Getestete Reaktivität: Human	

Hintergrundinformationen

CX3CR1, also known as GPR13, V28 and fractalkine receptor, belongs to the 7-transmembrane G protein-coupled receptor (GPCR) family. It is expressed on microglia, astrocytes, NK cells, monocytes/macrophages, and a subpopulation of T cells. CX3CR1 is the receptor for fractalkine (CX3CL1) and mediates both its adhesive and migratory functions. It also acts as coreceptor with CD4 for HIV-1 virus envelope protein (in vitro), and some variations in the gene of CX3CR1 lead to increased susceptibility to HIV-1 infection and rapid progression to AIDS. Defects in CX3CR1 are a cause of susceptibility to age-related macular degeneration type 12 (ARMD12).

Lagerung

Lagerungsbedingungen:
Bei -20°C lagern. Nach dem Versand ein Jahr lang stabil
Lagerungspuffer:
PBS mit 0.02% Natriumazid und 50% Glycerin pH 7.3.
Aliquotieren ist nicht notwendig bei -20°C Lagerung

***** 20ul-Größen enthalten 0.1% BSA**

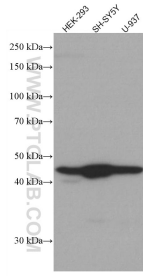
For technical support and original validation data for this product please contact:

T: 1 (888) 4PTGLAB (1-888-478-4522) (toll free
in USA), or 1(312) 455-8498 (outside USA)

E: proteintech@ptglab.com
W: ptglab.com

This product is exclusively available under Proteintech Group brand and is not available to purchase from any other manufacturer.

Ausgewählte Validierungsdaten



Various lysates were subjected to SDS PAGE followed by western blot with 66915-1-Ig (CX3CR1 antibody) at dilution of 1:5000 incubated at room temperature for 1.5 hours.